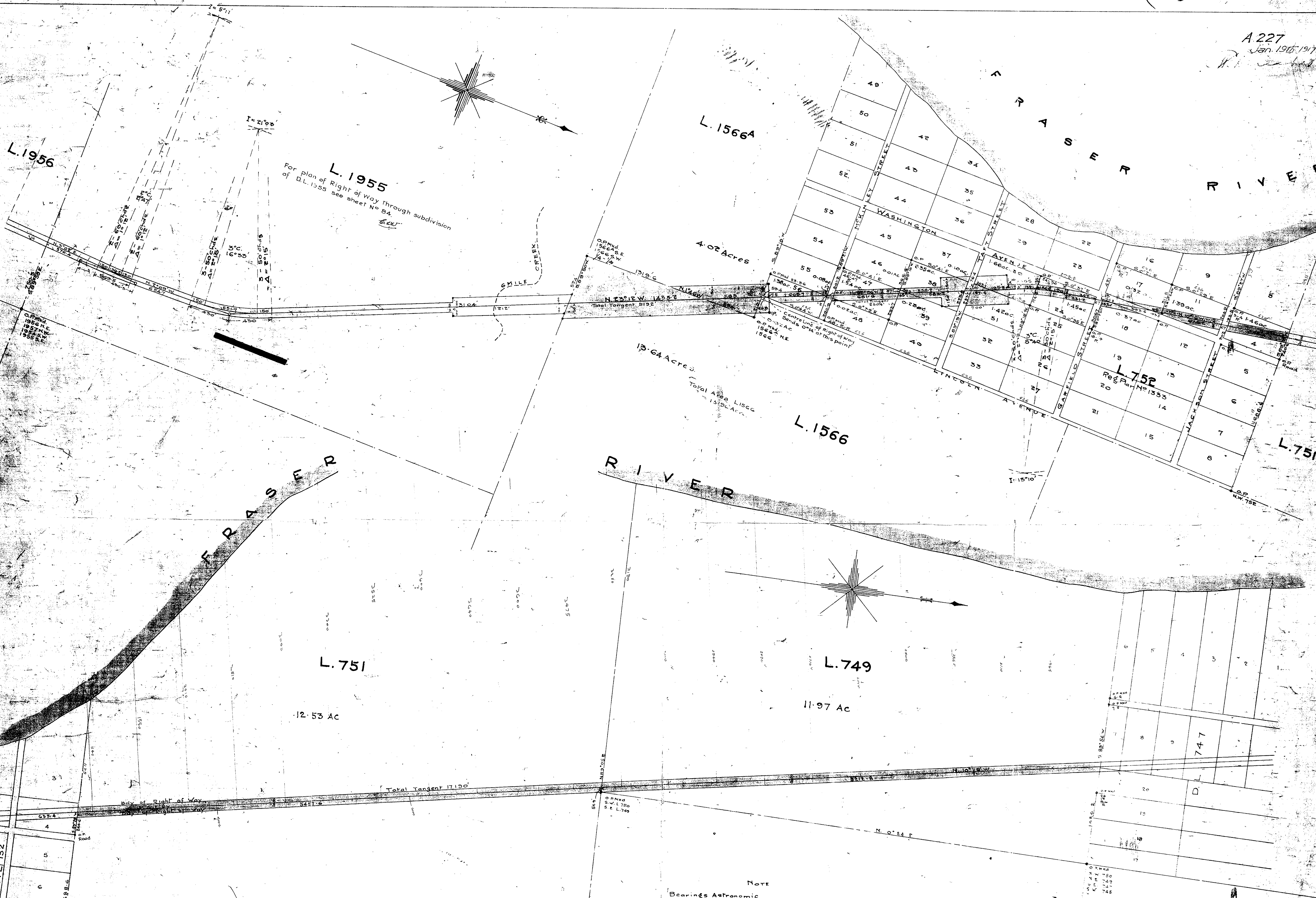


A 227
Jan. 1916 1917

W. Williams



L. 1955
For plan of Right of Way through subdivision
of D.L. 1955 see sheet No 84.

I, Charles W. Williams, of the City of Vancouver, British Columbia Land Surveyor, make oath and say that I was present at and did personally superintend the survey represented by this plan and that the survey and plan are correct. The said survey was completed on the 15th day of July 1916 Sworn before me this 21 day of December 1916
Charles W. Williams

Note
Bearings Astronomic
The Iron posts planted for reference the points of deflection from the tangents are placed on the tangents produced and shown thus.
The Transition Curves used increase uniformly one degree in curvature in the length of subchord stated.
Posts have been placed at the corners of extra widths when the physical features of the country rendered it practicable.

**PLAN SHOWING
PACIFIC GREAT EASTERN RAILWAY
RIGHT OF WAY THROUGH
District Lots 1566, 1566A, 752, 751 & 749.
CARIBOO DISTRICT.**

A-227