

C 222 54
C.C. 822
19229

NO METRIC BASE MAP

(MV)

PLAN NO. A-2248.

Deposited in the Land Registry Office at Kamloops
This 15th day of December, 1961 A.D.

Registrar

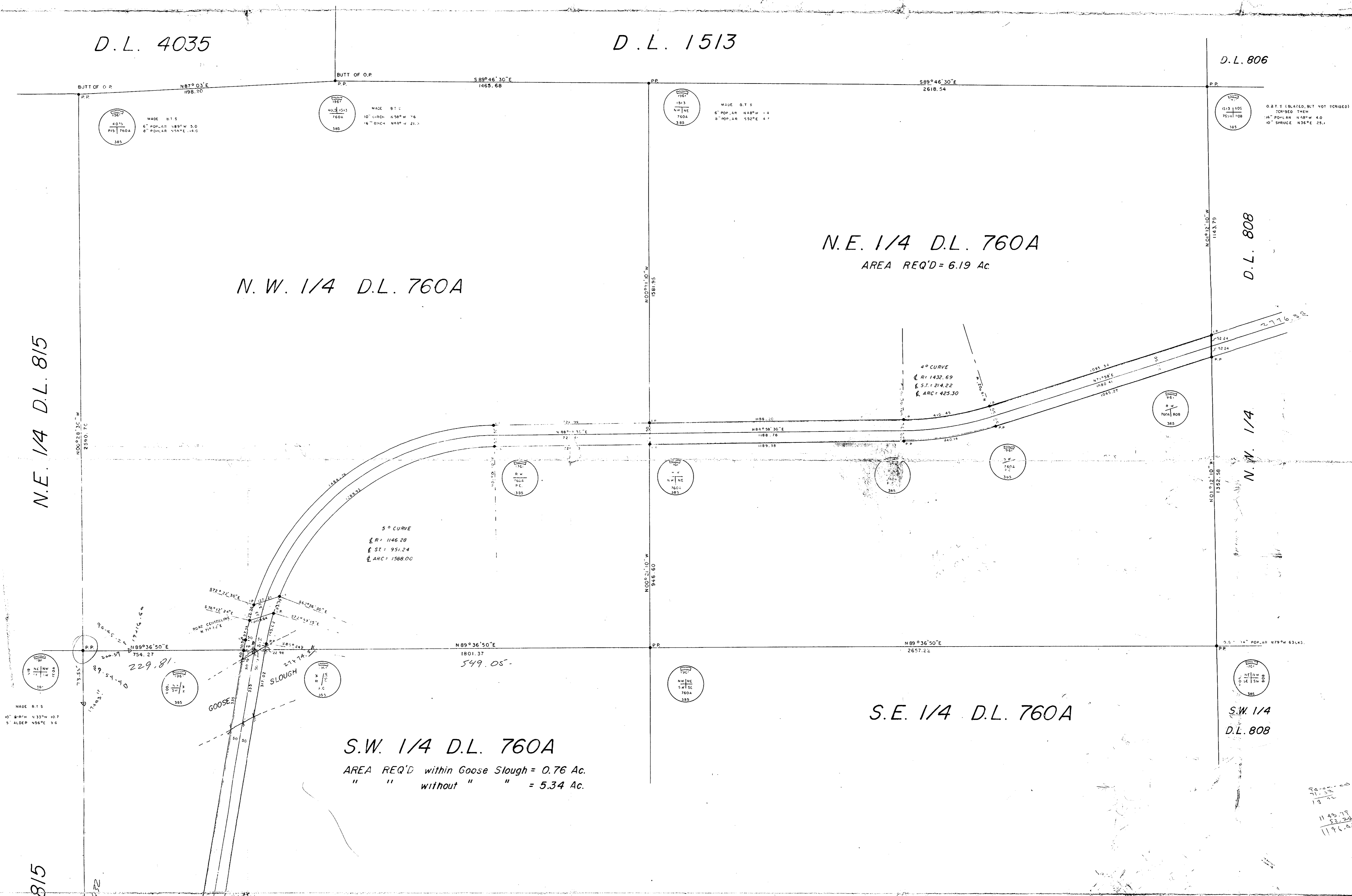
PLOTTED (MW)(NW)
(MV)

PACIFIC GREAT EASTERN RAILWAY COMPANY
PLAN OF RAILWAY RIGHT-OF-WAY THROUGH
THE SOUTHWEST & NORTHEAST QUARTERS OF
DISTRICT LOT 760A - CARIBOO DISTRICT
SCALE: 1" = 200'

NOTE: Bearings are astronomic, derived from the South Boundary of
D.L. 760A, as shown on Plan A-1743.

LEGEND:

- O.P.P. denotes an old pipe post found.
- O.I.P. denotes an old iron pin found.
- P.P. denotes a standard pipe post placed on this survey.
- I.P. denotes a standard iron pin placed on this survey.



N.W. 1/4 D.L. 760A

N.E. 1/4 D.L. 760A
AREA REQ'D = 6.19 Ac.

S.W. 1/4 D.L. 760A
AREA REQ'D within Goose Slough = 0.76 Ac.
" " without " " = 5.34 Ac.

S.E. 1/4 D.L. 760A

N.E. 1/4 D.L. 815

S.E. 1/4 D.L. 815

PACIFIC GREAT EASTERN RAILWAY COMPANY

A. J. Gaudin
Vice President
A. Bryson
Secretary

APPROVED
R. B. ...
Chief Engineer

SANCTIONED BY
Minister of Commercial Transport

I, DONALD A. DUFFY, of the City of Prince George, British Columbia Land Surveyor,
make oath and say that I was present at and did personally superintend the survey
represented by this plan, and that the survey and plan are correct.
The said survey was completed on the 13th day of June, 1961 A.D.

D. A. Duffy
B.C.L.S.

Sworn before me
This 15th day of June, 1961

James ...
A Commissioner for taking Affidavits within the Province of B.C.

FRAC. N. 1/4
D.L. 811