

PLAN No. A-1780  
agreed in the final survey office of  
Surveyor General  
1907

NOTED  
N.N.O.M.

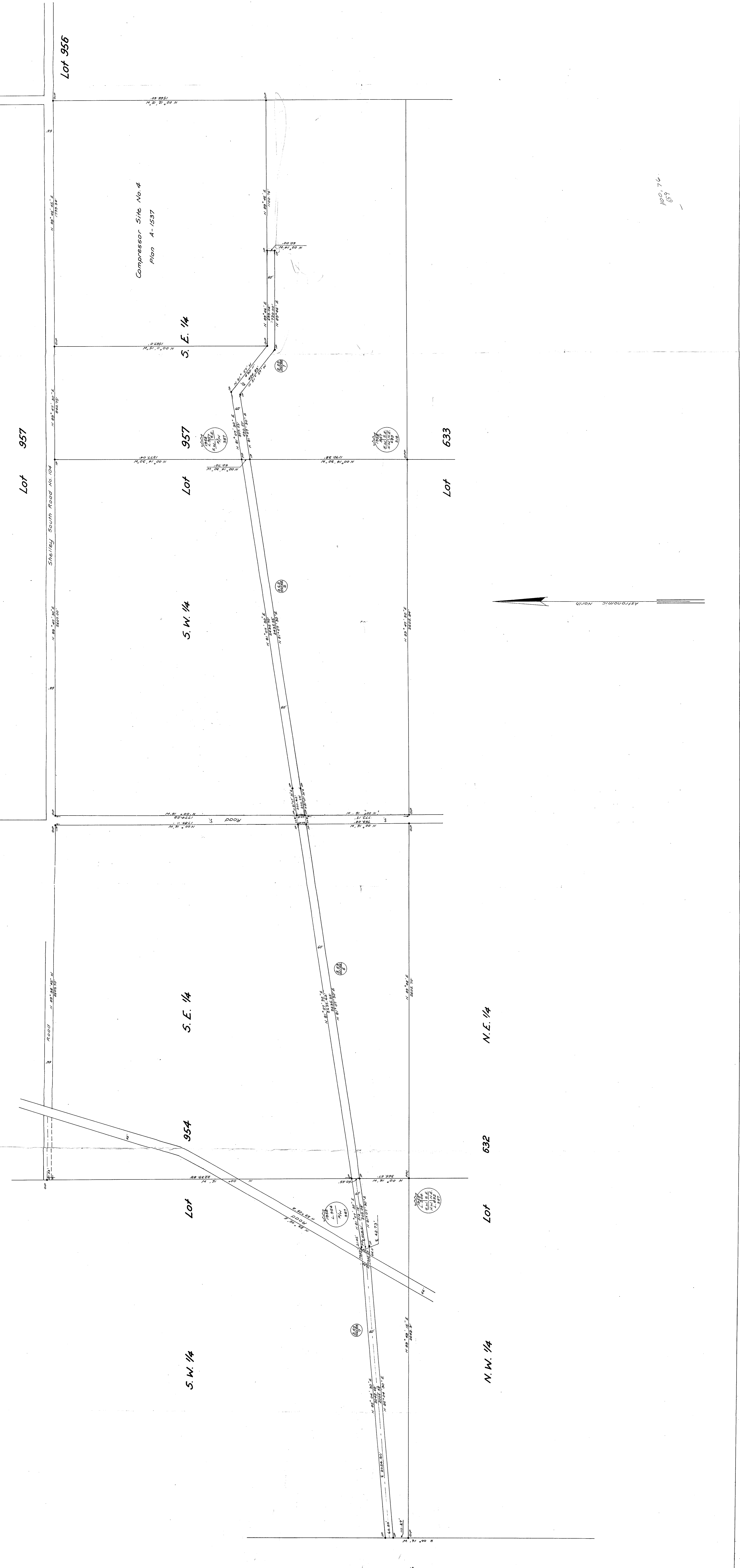
Plan of  
Gas Pipe Line Right-of-Way through  
South East 1/4 and South West 1/4 Lot 957,  
~~Lot 19 Plan~~, Lot 9 Plan, South  
East 1/4 and South West 1/4 Lot 954,  
Cariboo District, British Columbia.

Scale: 1" = 200'

- LEGEND:
- in denotes standard iron pipe set
  - in denotes pipe that is "C" in set
  - in denotes pipe that is "D" in set
  - in denotes pipe that is "E" in set
  - in denotes pipe that is "F" in set
  - in denotes pipe that is "G" in set
  - in denotes pipe that is "H" in set
  - in denotes pipe that is "I" in set
  - in denotes pipe that is "J" in set
  - in denotes pipe that is "K" in set
  - in denotes pipe that is "L" in set
  - in denotes pipe that is "M" in set
  - in denotes pipe that is "N" in set
  - in denotes pipe that is "O" in set
  - in denotes pipe that is "P" in set
  - in denotes pipe that is "Q" in set
  - in denotes pipe that is "R" in set
  - in denotes pipe that is "S" in set
  - in denotes pipe that is "T" in set
  - in denotes pipe that is "U" in set
  - in denotes pipe that is "V" in set
  - in denotes pipe that is "W" in set
  - in denotes pipe that is "X" in set
  - in denotes pipe that is "Y" in set
  - in denotes pipe that is "Z" in set

TABLE OF REFERENCES

| Description        | No. | Acres | Ownership |
|--------------------|-----|-------|-----------|
| S. E. 1/4 Lot 957  | 1   | 5.63  | Private   |
| S. W. 1/4 Lot 957  | 2   | 5.63  | Private   |
| S. E. 1/4 Lot 954  | 3   | 5.63  | Private   |
| S. W. 1/4 Lot 954  | 4   | 5.63  | Private   |
| S. E. 1/4 Lot 955  | 5   | 5.63  | Private   |
| S. W. 1/4 Lot 955  | 6   | 5.63  | Private   |
| S. E. 1/4 Lot 956  | 7   | 5.63  | Private   |
| S. W. 1/4 Lot 956  | 8   | 5.63  | Private   |
| S. E. 1/4 Lot 958  | 9   | 5.63  | Private   |
| S. W. 1/4 Lot 958  | 10  | 5.63  | Private   |
| S. E. 1/4 Lot 959  | 11  | 5.63  | Private   |
| S. W. 1/4 Lot 959  | 12  | 5.63  | Private   |
| S. E. 1/4 Lot 960  | 13  | 5.63  | Private   |
| S. W. 1/4 Lot 960  | 14  | 5.63  | Private   |
| S. E. 1/4 Lot 961  | 15  | 5.63  | Private   |
| S. W. 1/4 Lot 961  | 16  | 5.63  | Private   |
| S. E. 1/4 Lot 962  | 17  | 5.63  | Private   |
| S. W. 1/4 Lot 962  | 18  | 5.63  | Private   |
| S. E. 1/4 Lot 963  | 19  | 5.63  | Private   |
| S. W. 1/4 Lot 963  | 20  | 5.63  | Private   |
| S. E. 1/4 Lot 964  | 21  | 5.63  | Private   |
| S. W. 1/4 Lot 964  | 22  | 5.63  | Private   |
| S. E. 1/4 Lot 965  | 23  | 5.63  | Private   |
| S. W. 1/4 Lot 965  | 24  | 5.63  | Private   |
| S. E. 1/4 Lot 966  | 25  | 5.63  | Private   |
| S. W. 1/4 Lot 966  | 26  | 5.63  | Private   |
| S. E. 1/4 Lot 967  | 27  | 5.63  | Private   |
| S. W. 1/4 Lot 967  | 28  | 5.63  | Private   |
| S. E. 1/4 Lot 968  | 29  | 5.63  | Private   |
| S. W. 1/4 Lot 968  | 30  | 5.63  | Private   |
| S. E. 1/4 Lot 969  | 31  | 5.63  | Private   |
| S. W. 1/4 Lot 969  | 32  | 5.63  | Private   |
| S. E. 1/4 Lot 970  | 33  | 5.63  | Private   |
| S. W. 1/4 Lot 970  | 34  | 5.63  | Private   |
| S. E. 1/4 Lot 971  | 35  | 5.63  | Private   |
| S. W. 1/4 Lot 971  | 36  | 5.63  | Private   |
| S. E. 1/4 Lot 972  | 37  | 5.63  | Private   |
| S. W. 1/4 Lot 972  | 38  | 5.63  | Private   |
| S. E. 1/4 Lot 973  | 39  | 5.63  | Private   |
| S. W. 1/4 Lot 973  | 40  | 5.63  | Private   |
| S. E. 1/4 Lot 974  | 41  | 5.63  | Private   |
| S. W. 1/4 Lot 974  | 42  | 5.63  | Private   |
| S. E. 1/4 Lot 975  | 43  | 5.63  | Private   |
| S. W. 1/4 Lot 975  | 44  | 5.63  | Private   |
| S. E. 1/4 Lot 976  | 45  | 5.63  | Private   |
| S. W. 1/4 Lot 976  | 46  | 5.63  | Private   |
| S. E. 1/4 Lot 977  | 47  | 5.63  | Private   |
| S. W. 1/4 Lot 977  | 48  | 5.63  | Private   |
| S. E. 1/4 Lot 978  | 49  | 5.63  | Private   |
| S. W. 1/4 Lot 978  | 50  | 5.63  | Private   |
| S. E. 1/4 Lot 979  | 51  | 5.63  | Private   |
| S. W. 1/4 Lot 979  | 52  | 5.63  | Private   |
| S. E. 1/4 Lot 980  | 53  | 5.63  | Private   |
| S. W. 1/4 Lot 980  | 54  | 5.63  | Private   |
| S. E. 1/4 Lot 981  | 55  | 5.63  | Private   |
| S. W. 1/4 Lot 981  | 56  | 5.63  | Private   |
| S. E. 1/4 Lot 982  | 57  | 5.63  | Private   |
| S. W. 1/4 Lot 982  | 58  | 5.63  | Private   |
| S. E. 1/4 Lot 983  | 59  | 5.63  | Private   |
| S. W. 1/4 Lot 983  | 60  | 5.63  | Private   |
| S. E. 1/4 Lot 984  | 61  | 5.63  | Private   |
| S. W. 1/4 Lot 984  | 62  | 5.63  | Private   |
| S. E. 1/4 Lot 985  | 63  | 5.63  | Private   |
| S. W. 1/4 Lot 985  | 64  | 5.63  | Private   |
| S. E. 1/4 Lot 986  | 65  | 5.63  | Private   |
| S. W. 1/4 Lot 986  | 66  | 5.63  | Private   |
| S. E. 1/4 Lot 987  | 67  | 5.63  | Private   |
| S. W. 1/4 Lot 987  | 68  | 5.63  | Private   |
| S. E. 1/4 Lot 988  | 69  | 5.63  | Private   |
| S. W. 1/4 Lot 988  | 70  | 5.63  | Private   |
| S. E. 1/4 Lot 989  | 71  | 5.63  | Private   |
| S. W. 1/4 Lot 989  | 72  | 5.63  | Private   |
| S. E. 1/4 Lot 990  | 73  | 5.63  | Private   |
| S. W. 1/4 Lot 990  | 74  | 5.63  | Private   |
| S. E. 1/4 Lot 991  | 75  | 5.63  | Private   |
| S. W. 1/4 Lot 991  | 76  | 5.63  | Private   |
| S. E. 1/4 Lot 992  | 77  | 5.63  | Private   |
| S. W. 1/4 Lot 992  | 78  | 5.63  | Private   |
| S. E. 1/4 Lot 993  | 79  | 5.63  | Private   |
| S. W. 1/4 Lot 993  | 80  | 5.63  | Private   |
| S. E. 1/4 Lot 994  | 81  | 5.63  | Private   |
| S. W. 1/4 Lot 994  | 82  | 5.63  | Private   |
| S. E. 1/4 Lot 995  | 83  | 5.63  | Private   |
| S. W. 1/4 Lot 995  | 84  | 5.63  | Private   |
| S. E. 1/4 Lot 996  | 85  | 5.63  | Private   |
| S. W. 1/4 Lot 996  | 86  | 5.63  | Private   |
| S. E. 1/4 Lot 997  | 87  | 5.63  | Private   |
| S. W. 1/4 Lot 997  | 88  | 5.63  | Private   |
| S. E. 1/4 Lot 998  | 89  | 5.63  | Private   |
| S. W. 1/4 Lot 998  | 90  | 5.63  | Private   |
| S. E. 1/4 Lot 999  | 91  | 5.63  | Private   |
| S. W. 1/4 Lot 999  | 92  | 5.63  | Private   |
| S. E. 1/4 Lot 1000 | 93  | 5.63  | Private   |
| S. W. 1/4 Lot 1000 | 94  | 5.63  | Private   |



I, Colin H. Brady of the City of Victoria, British Columbia, Land Surveyor, make oath and say that I was present at and did participate in the survey and plan hereon, and that the survey and plan are correct. The said survey was completed on the 23rd day of October, 1907.

Witness my hand and seal at Victoria, B.C., this 23rd day of October, 1907.

Colin H. Brady

A Commissioner for taking Affidavits within British Columbia.

1907  
69