

D.L. 760A

DISTRICT LOT 815

FRACT N.E. 1/4 D.L. 816
AREA REQUIRED: 4.715 ACRES

FRACT S.E. 1/4 D.L. 816

S.W. 1/4 D.L. 816
AREA REQUIRED: 14.931 ACRES

PACIFIC GREAT EASTERN RAILWAY CARIBOO DISTRICT - BRITISH COLUMBIA

PLAN

SHOWING SUPERIOR RAILWAY RIGHT-OF-WAY THROUGH
DISTRICT LOTS 816 AND 817
D. A. DUFFY, B.C.L.S. 1958 SCALE: 1" = 200'

NOTE: Bearings are astronomic and are derived from an observation on a Polaris star made on the 15th day of August, 1958, at the intersection of the center line of the railway and the center line of the section through the point of observation.

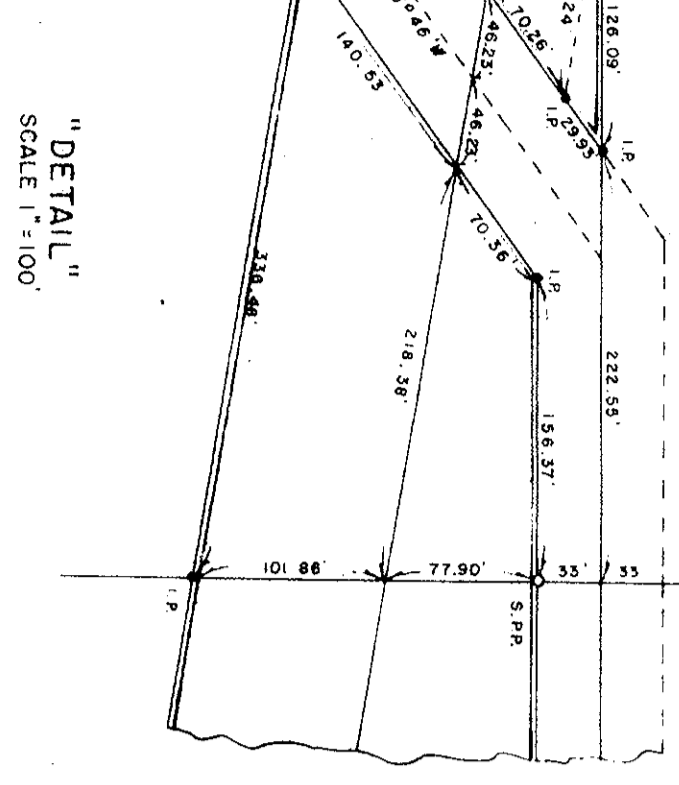
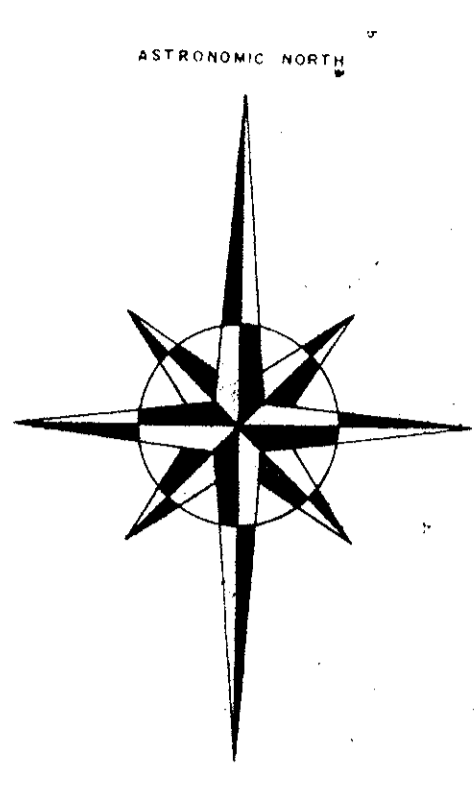
LEGEND:
○ O.I.P. denotes an old iron pipe found
○ O.P. denotes an old wood post found
● S.P. denotes a steel pipe found
● S.P.P. denotes a steel pipe found in place

PARCEL "A"

DISTRICT LOT 817

WESTERLY 12 1/2 CHAINS OF NORTHERLY 40 CHAINS

N.W. 1/4 D.L. 816
AREA REQUIRED: 1.721 ACRES



I, DONALD A. DUFFY, Civil Engineer, British Columbia Land Surveyor, make solemn oath, that I am the author of the foregoing plan, and that the same is a true and correct representation of the survey of the land described therein, and that the same was made by me or under my direction and supervision, and that I am a duly qualified and licensed surveyor under the laws of the Province of British Columbia, and that I am not a party to any fraud or collusion in the execution of the same, and that I am not a party to any fraud or collusion in the execution of the same, and that I am not a party to any fraud or collusion in the execution of the same.

APPROVED BY:
D. A. DUFFY
CIVIL ENGINEER

PACIFIC GREAT EASTERN RAILWAY CO.
WILLIAM L. BROWN
PRESIDENT

APPROVED
SUPERVISOR
DATE

BC DEPT. OF HIGHWAYS
FORT GEORGE DISTRICT
PLAN SHOWING ROAD CROSSING THROUGH D.L. 816
D.L. 816: 5.09 AC
D.L. 817: 5.09 AC
TOTAL: 10.18 AC

SURVEY	FILE NO.	DATE	SCALE	ENG. NO.
A.L.P.	217/470	1" = 200'		

D.L. 824

DISTRICT LOT 7815

PLAN 1743