

PLAN OF
 RIGHT-OF-WAY for POWER LINE, WATER LINE,
 and WASH-WATER LINE,
 through

part **LOT 483 CARIBOO DISTRICT.**
 superseding part of Map M.131, accompanying Expropriation Order.
 Scale 1 inch to 100 feet.

Bearings Astronomical referred to Meridian where marked Observation Station.
 The symbol ● IP indicates half-inch galvanized iron pipe two feet long set.

PLAN N°:

Deposited under Section 79 of the
 'Land Registry Act' this day
 of 194

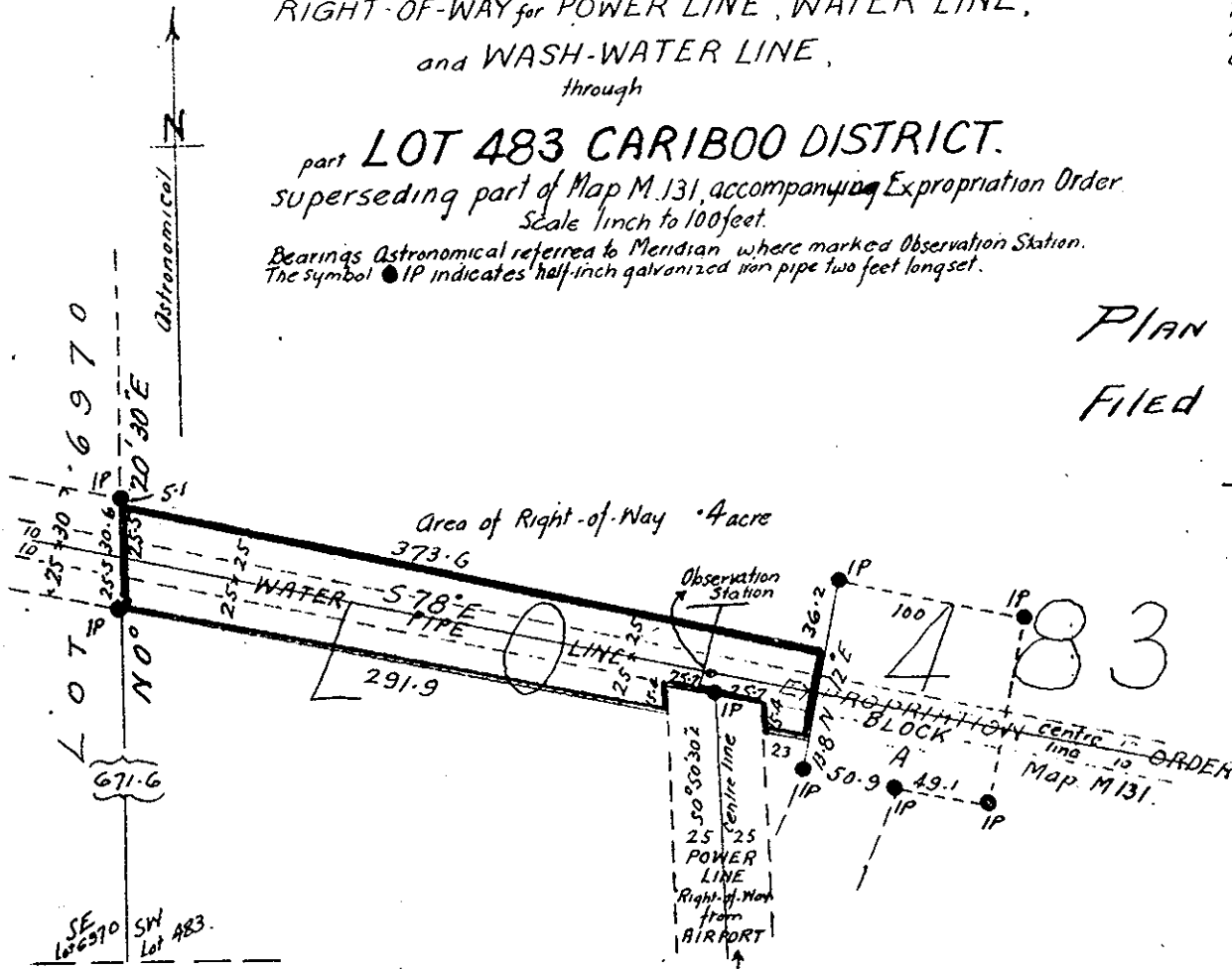
Registrar.

PLAN No. A1019

FILED 27th MAY 1946

R. Shears

DEPUTY REGISTRAR.



I, Ernest John Gook, of Quesnel, B.C., British Columbia Land Surveyor make oath and say that I was present at and did personally superintend the survey represented by this plan and that the survey and plan are correct. The said survey was completed on the 6th day of November, 1944.

Sworn before me this 20th day of July 1945

Eugene L...

Stipendiary Magistrate

[Signature]

E. J. Gook, B.C.L.S.
 Quesnel, B.C.