

POSTING PLAN OF LOT 18, DISTRICT LOT DISTRICT LOT 2433, CARIBOO DISTRICT, PLAN 22464.

PLAN EPP34749

PURSUANT TO SECTION 68 OF THE LAND TITLE ACT.

BCGS 93G.097

THE INTENDED PLOT SIZE OF THIS PLAN IS 560mm IN WIDTH BY
432mm IN HEIGHT (C SIZE) WHEN PLOTTED AT A SCALE OF 1:500

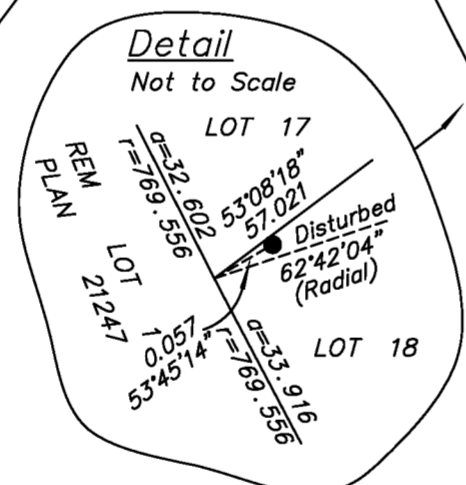
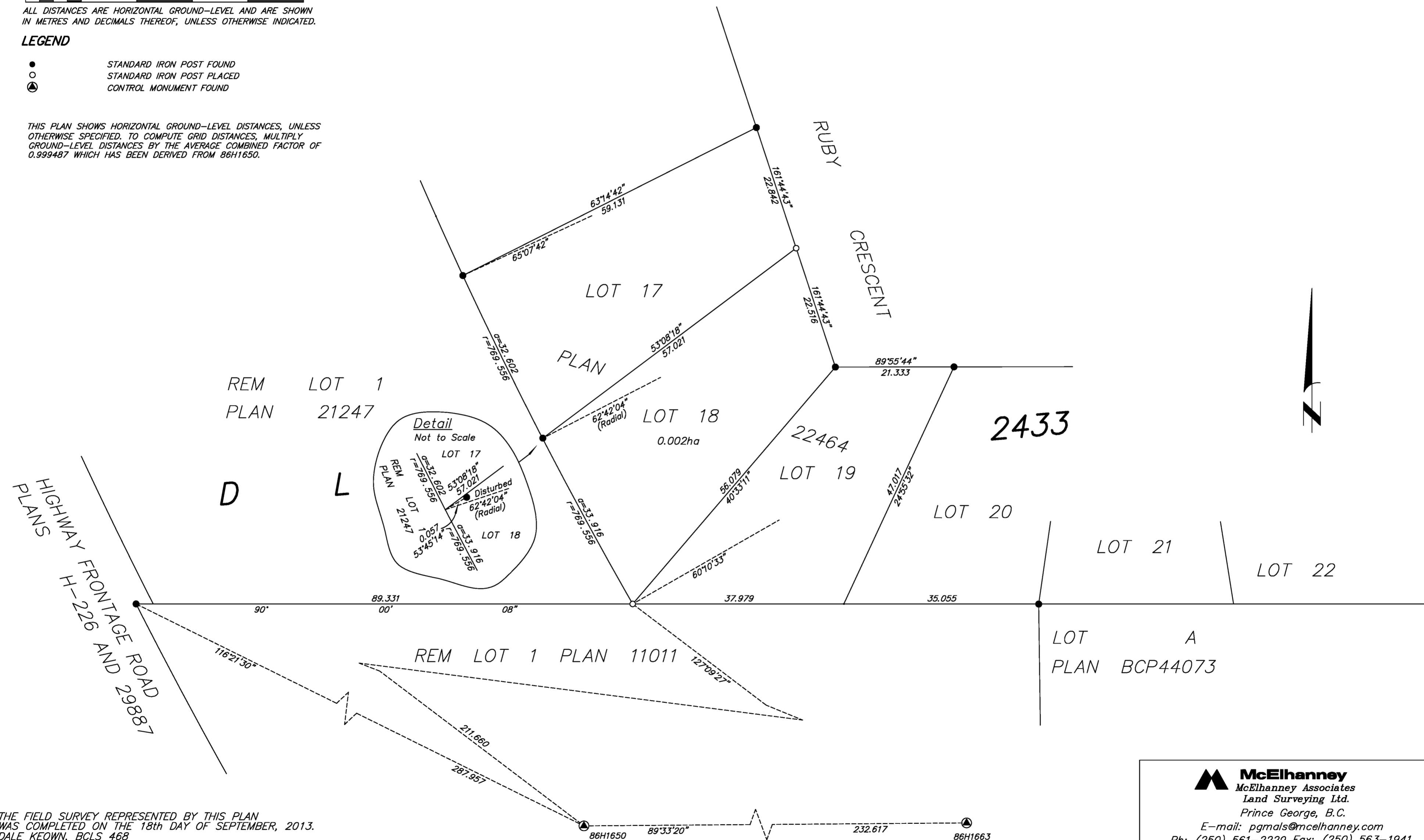


ALL DISTANCES ARE HORIZONTAL GROUND-LEVEL AND ARE SHOWN
IN METRES AND DECIMALS THEREOF, UNLESS OTHERWISE INDICATED.

LEGEND

- STANDARD IRON POST FOUND
- STANDARD IRON POST PLACED
- ⊙ CONTROL MONUMENT FOUND


THIS PLAN SHOWS HORIZONTAL GROUND-LEVEL DISTANCES, UNLESS
OTHERWISE SPECIFIED. TO COMPUTE GRID DISTANCES, MULTIPLY
GROUND-LEVEL DISTANCES BY THE AVERAGE COMBINED FACTOR OF
0.999487 WHICH HAS BEEN DERIVED FROM 86H1650.



HIGHWAY FRONTAGE ROAD
H-226 AND 29887
PLANS

THE FIELD SURVEY REPRESENTED BY THIS PLAN
WAS COMPLETED ON THE 18th DAY OF SEPTEMBER, 2013.
DALE KEOWN, BCLS 468

THIS PLAN LIES WITHIN THE REGIONAL DISTRICT OF FRASER - FORT GEORGE.

 McElhanney McElhanney Associates Land Surveying Ltd. Prince George, B.C. E-mail: pgmals@mcelhanney.com Ph: (250) 561-2229 Fax: (250) 563-1941	
DL - 2433	File No. - 6013-131