

**POSTING PLAN OF PARTS OF  
BLOCKS 43, 44, 45, 46, 131,  
132, 133 & 134, PLAN 1268  
DISTRICT LOT 343  
CARIBOO DISTRICT**

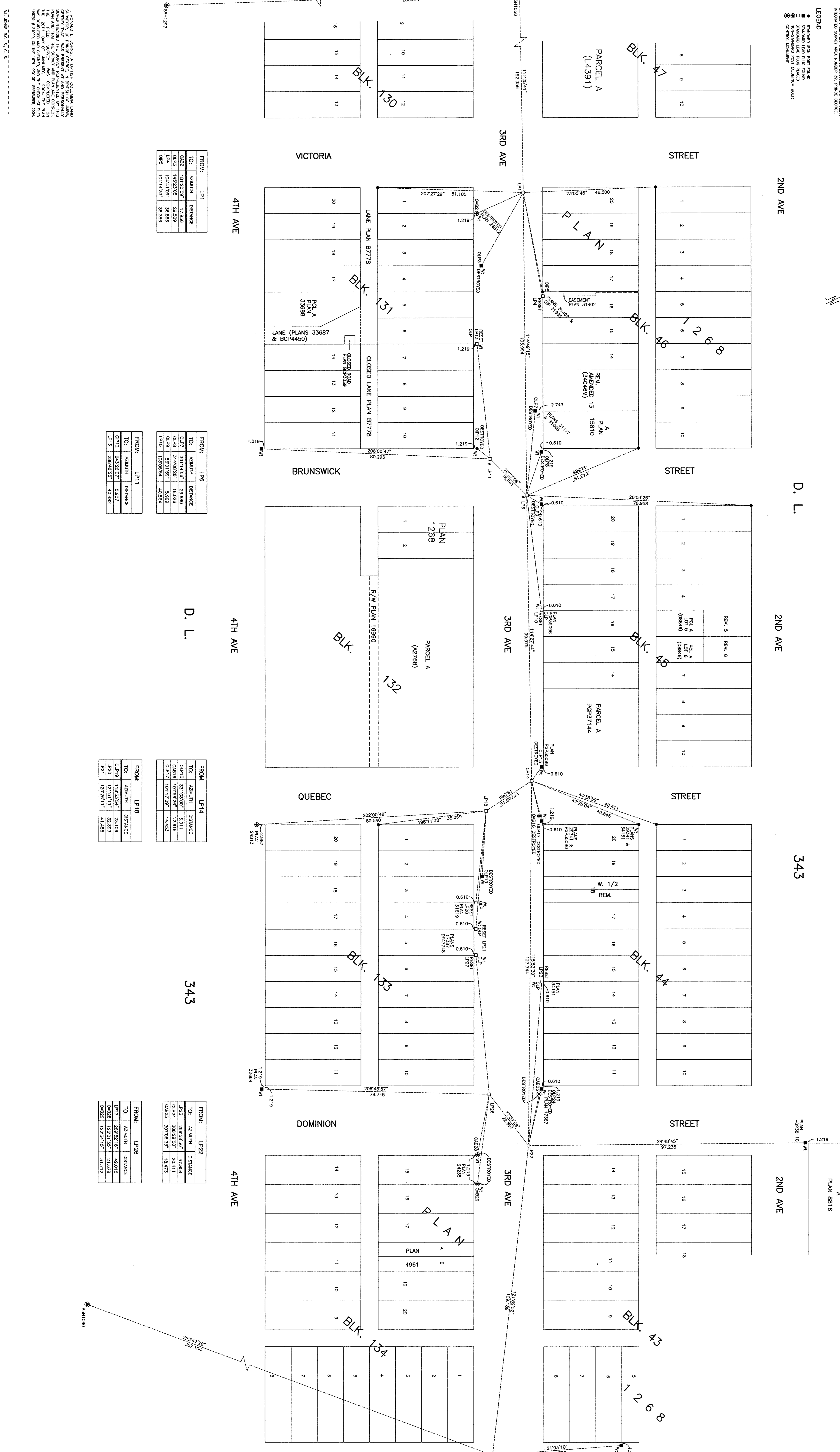
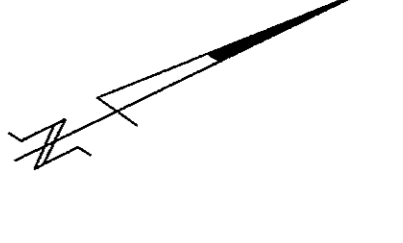
B.C.S. 936,097  
PURSUANT TO SECTION 68 OF THE LAND TITLE ACT.

SCALE = 1 : 500  
ALL DISTANCES SHOWN ARE IN METRES.

THIS PLAN SHOWS EXACT-LEVEL ADJUSTED DISTANCES, BEING THE DISTANCES MEASURED ON THE GROUND AND BEING THE DISTANCES CALCULATED BY THE METHOD OF TRIANGULATION. THE DISTANCES SHOWN ARE THE DISTANCES MEASURED ON THE GROUND AND NOT THE DISTANCES CALCULATED BY THE METHOD OF TRIANGULATION.

**LEGEND**

- STATIONED END POINT FOUND
- STATIONED END POINT NOT FOUND
- STATIONED END POINT FOUND
- STATIONED END POINT NOT FOUND
- STATIONED END POINT FOUND
- STATIONED END POINT NOT FOUND



FROM:	LP1	
TO:	AZIMUTH	DISTANCE
OP2	181°20'07"	17.856
OP3	146°23'05"	29.829
OP4	104°11'39"	38.866
OP5	104°14'33"	35.388

FROM:	LP6	
TO:	AZIMUTH	DISTANCE
OP7	307°14'56"	28.680
OP8	314°08'28"	18.028
OP9	59°01'59"	5.989
OP10	108°03'54"	40.584

FROM:	LP11	
TO:	AZIMUTH	DISTANCE
OP12	243°29'07"	5.007
OP13	288°48'25"	40.482

FROM:	LP14	
TO:	AZIMUTH	DISTANCE
OP15	331°06'00"	6.011
OP16	101°58'26"	12.816
OP17	101°17'09"	14.453

FROM:	LP18	
TO:	AZIMUTH	DISTANCE
OP19	118°53'54"	23.106
OP20	121°01'11"	32.393
OP21	120°28'11"	41.488

FROM:	LP22	
TO:	AZIMUTH	DISTANCE
OP23	289°58'56"	57.864
OP24	308°28'00"	20.411
OP25	307°08'53"	18.473

FROM:	LP28	
TO:	AZIMUTH	DISTANCE
OP27	289°52'18"	48.018
OP28	128°21'55"	21.678
OP29	122°54'15"	31.712

1. REMOVAL OF STATIONED END POINT FOUND  
2. REMOVAL OF STATIONED END POINT NOT FOUND  
3. REMOVAL OF STATIONED END POINT FOUND  
4. REMOVAL OF STATIONED END POINT NOT FOUND  
5. REMOVAL OF STATIONED END POINT FOUND  
6. REMOVAL OF STATIONED END POINT NOT FOUND  
7. REMOVAL OF STATIONED END POINT FOUND  
8. REMOVAL OF STATIONED END POINT NOT FOUND  
9. REMOVAL OF STATIONED END POINT FOUND  
10. REMOVAL OF STATIONED END POINT NOT FOUND