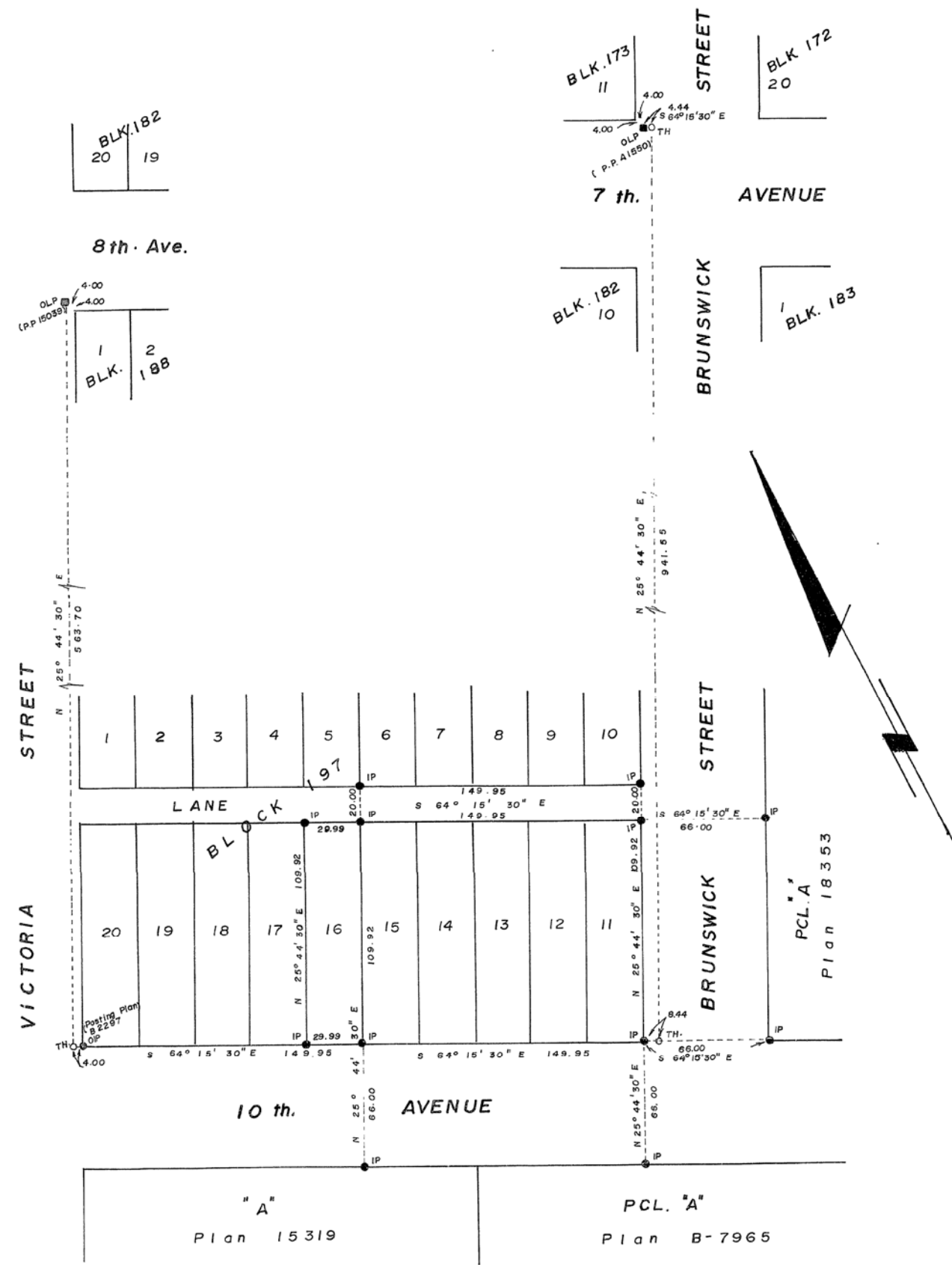


PLAN No.: 19597  
DEPOSITED IN THE LAND REGISTRY OFFICE  
AT PRINCE GEORGE ON THE 17th DAY OF SEPTEMBER 1971



POSTING PLAN OF  
 LOT 16, EAST BOUNDARY LOT II,  
 S.E. CORNERS OF LOTS 5 AND 10  
 OF BLOCK 197, S.W. CORNER AND  
 ON WEST BOUNDARY OF PCL.A,  
 PLAN 18353 AND ON NORTH BOUNDARYS  
 OF LOT A, PLAN 15319 AND  
 PCL. A , PLAN B- 7965

D.L. 343 , CARIBOO DISTRICT

Scale : 1" = 50'

BEARINGS ARE ASTRONOMIC, DERIVED FROM  
 OLP. WIT. TO N.W. BLK. 188 , PLAN 15039 AND  
 OIP AT S.W. BLOCK 197 , PLAN B - 2297

- LP ----- STANDARD IRON POST
- LP ----- LEAD PLUG
- ----- DENOTING OLD
- TH ----- TRAVERSE STATION

CERTIFIED CORRECT

THIS 17th DAY OF September 1971

*A. Daniluck*  
 A. DANILUCK B.C.L.S.

THIS PLAN LIES WITHIN THE FRASER -  
FORT GEORGE REGIONAL DISTRICT.

Mc WILLIAM WHYTE GOBLE & ASSOCIATES  
 B. C. LAND SURVEYORS  
 PRINCE GEORGE KAMLOOPS SMITHERS

Ref. No.: 71100-17