

26-FF-226

STRATA PLAN OF LOT H, PLAN 19342 DISTRICT LOT 934 CARIBOO DISTRICT - BRITISH COLUMBIA SCALE: 1" = 20'

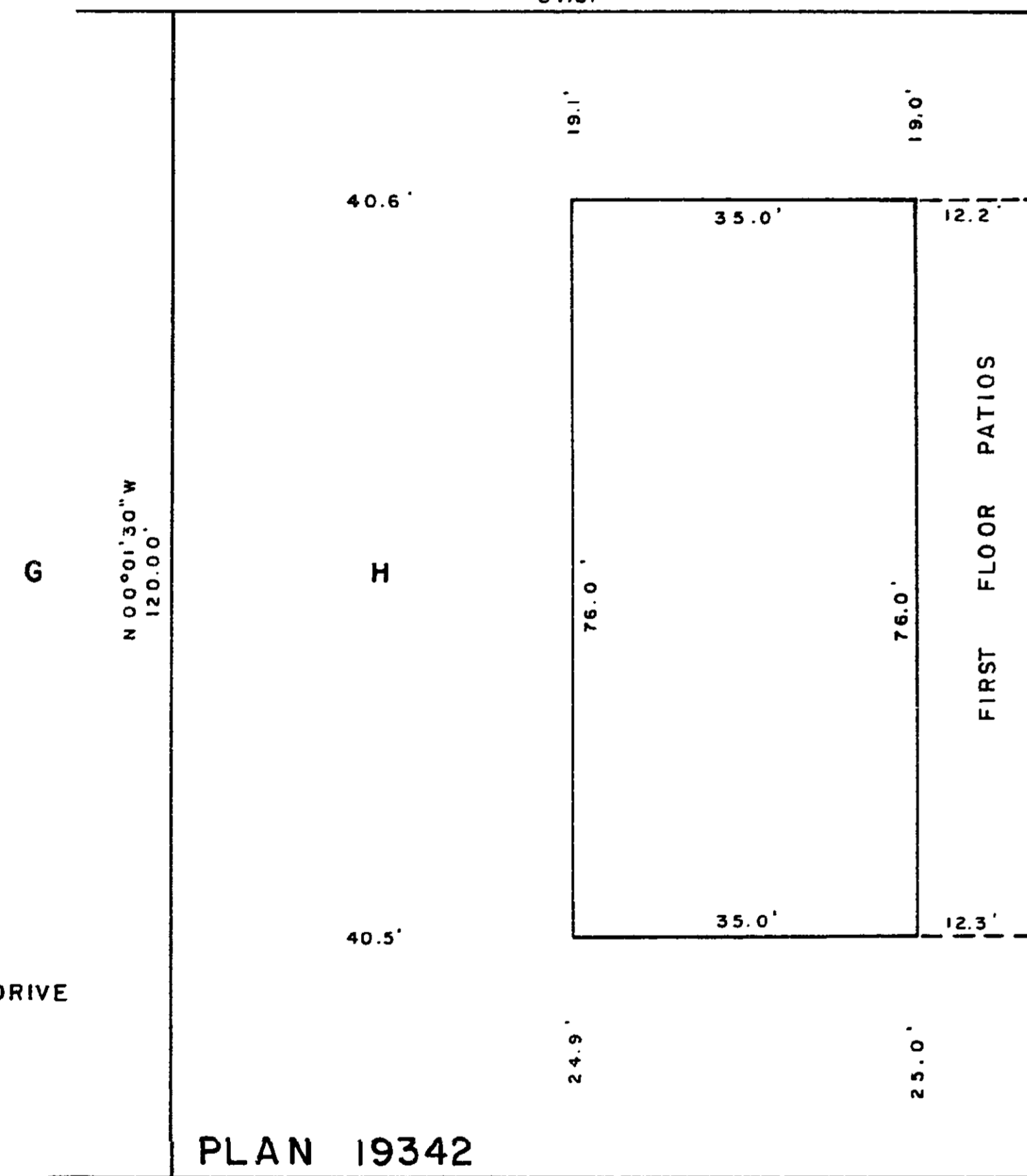
SHEET 1 OF 7 SHEETS

STRATA PLAN P.G. 9 Deposited and registered in the Land Registry Office at Prince George, B.C. this 6 day of JANUARY, 1976.

NOTE: Areas given for apartments include patios. F7041

E.T. SCHOOLEY Registrar

LANE 589° 49' 20" E 87.87'



NORWOOD THREE 1300-1308 DIEFENBAKER DRIVE PRINCE GEORGE - B.C.

PLAN 19342

87.87' 589° 49' 20" E DIEFENBAKER DRIVE

The address for service of documents on this Strata Corporation is:

DUNGATE & BASSETT 1460 - 6 TH AVENUE PRINCE GEORGE - B.C.

I, DONALD A. DUFFY of the City of Prince George a British Columbia Land Surveyor, hereby certify that the building erected on the parcel described above is wholly within the external boundaries of that parcel.

Signature of D.A. Duffy

BIDDLE HOLDING LTD.

Signature of Biddle Holding Ltd. representative

CANADA PERMANENT TRUST CORPORATION

Signature of Canada Permanent Trust representative

Approved by the City of Prince George, this 28 day of Nov 1975

Signature of Approving Officer

W.D. USHER & ASSOCIATES LAND SURVEYORS PRINCE GEORGE - B.C. 6376 B

Dated at Prince George, B.C. this 28 day of Nov 1975

SHEET 2 OF 7 SHEETS

STRATA PLAN P.G. 9

STRATA TITLES ACT

Table with 5 columns: LOT NO., SHEET NO., FORM 1 (SCHEDULE OF UNIT ENTITLEMENT), FORM 2 (SCHEDULE OF INTEREST UPON DESTRUCTION), FORM 3 (SCHEDULE OF VOTING RIGHTS). Rows include lots 1-5 and an aggregate row.

STATUTORY DECLARATION

I, the undersigned do solemnly declare that: I the undersigned am the duly authorized agent of the owner-developer. The strata plan is entirely for residential use. I make this solemn declaration conscientiously believing it to be true, and knowing that it is of the same force and effect as if made under oath.

Signature of Notary Public

Accepted as to forms 1, 2 and 3. This 16th day of December, 1975

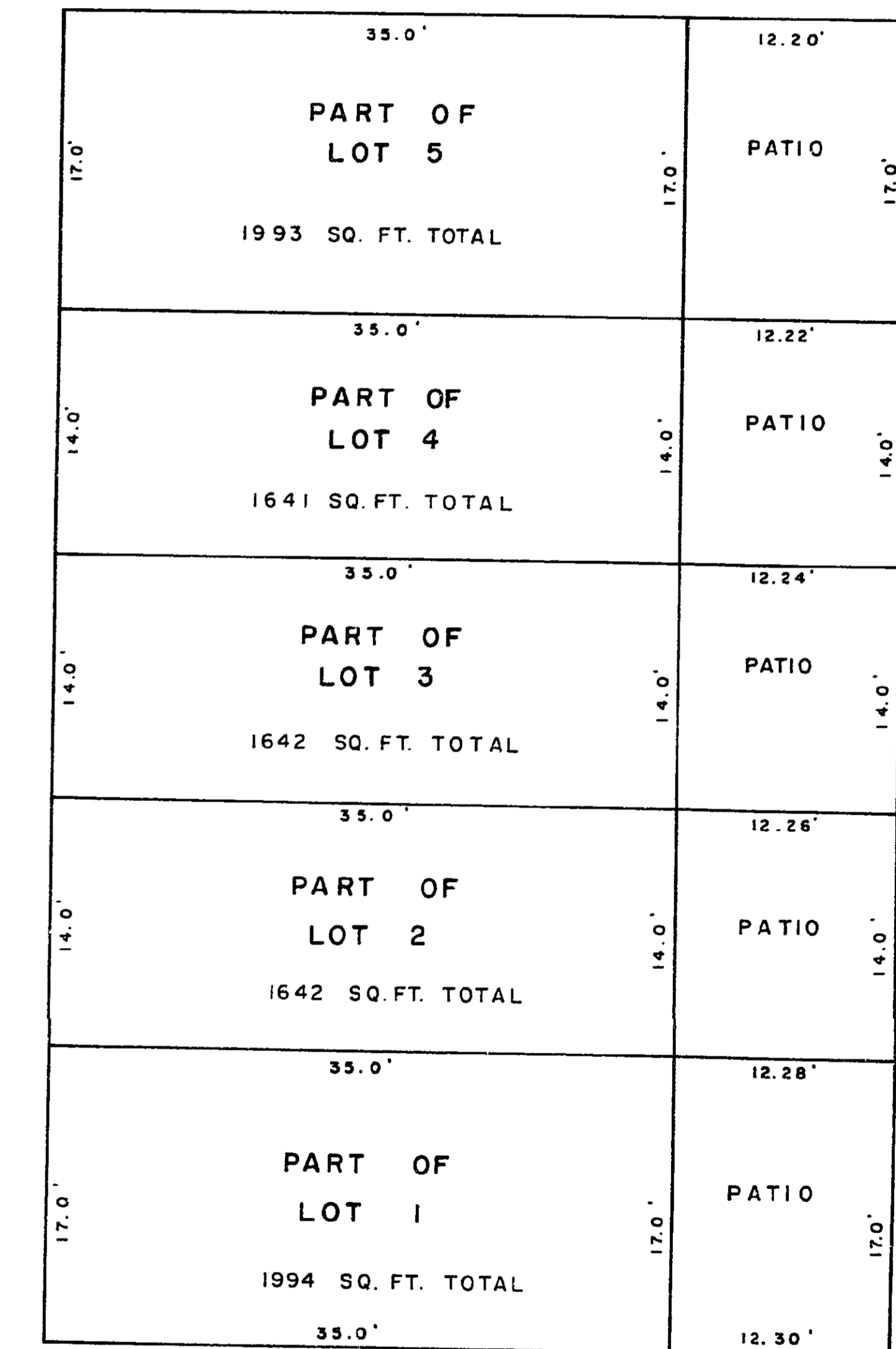
Signature of Superintendent of Insurance

Signature of Biddle Holdings Ltd. representative

W.D. USHER & ASSOCIATES LAND SURVEYORS PRINCE GEORGE - B.C. 6376 B

SHEET 3 OF 7 SHEETS

FIRST FLOOR PARTS OF LOTS 1 TO 5 INCLUSIVE STRATA PLAN P.G. 9 SCALE: 1" = 10'



Signature of D.A. Duffy

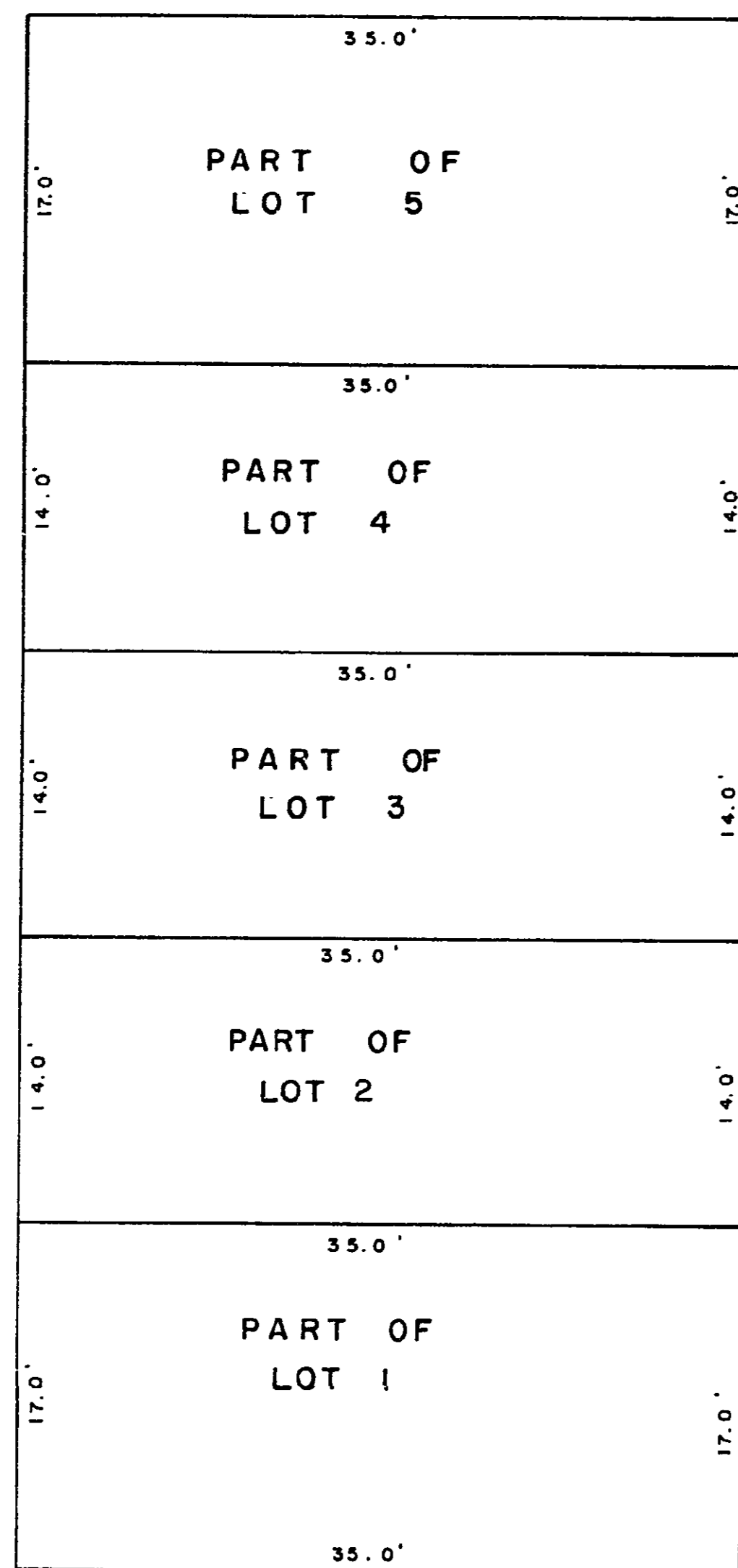
D.A. DUFFY, B.C. 28 day of Nov 1975



W.D. USHER & ASSOCIATES LAND SURVEYORS PRINCE GEORGE - B.C. 6376 B

BASEMENT FLOOR
PARTS OF LOTS 1 TO 5 INCLUSIVE
SCALE: 1" = 10'

STRATA PLAN P.G.9 -----

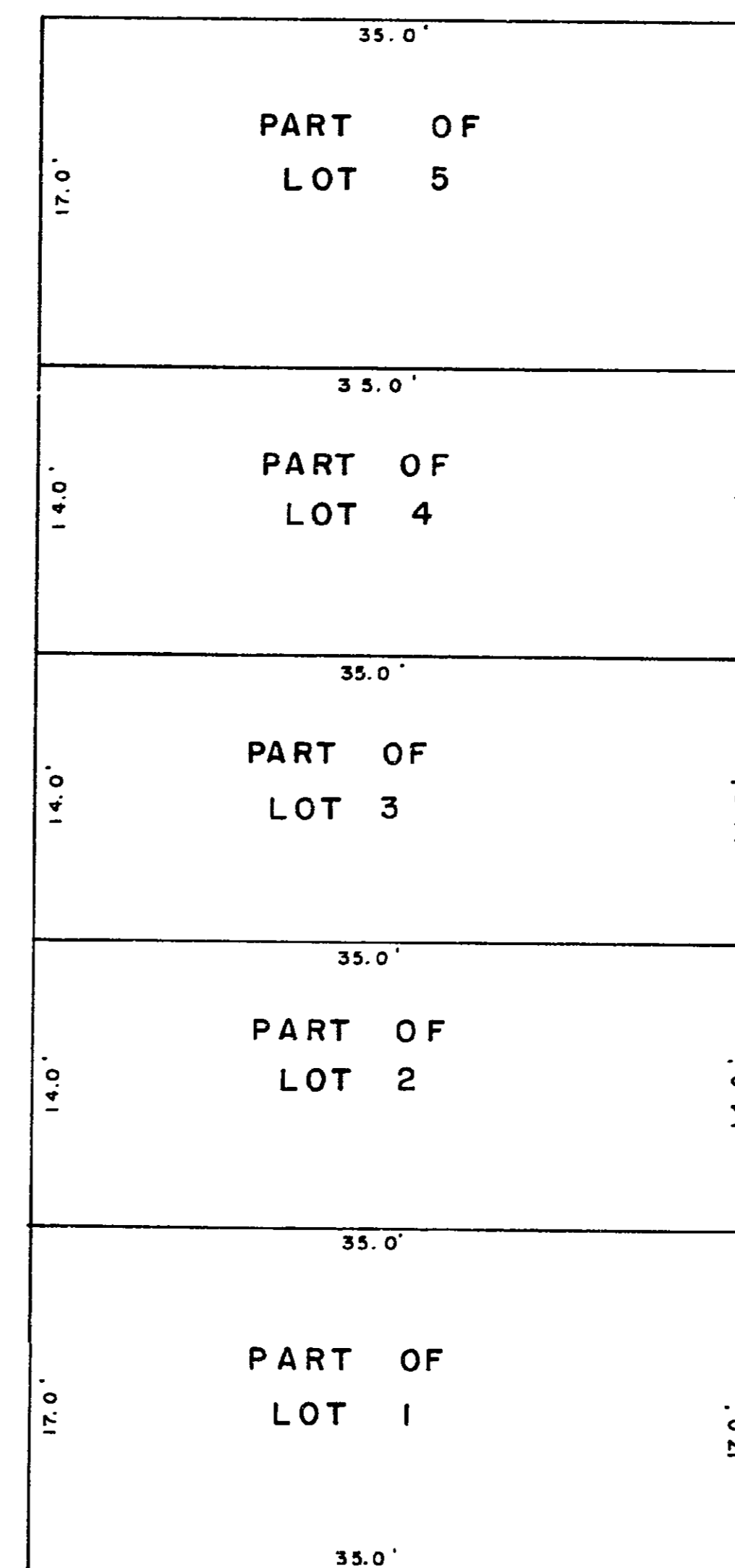


D.A. Duffy
 D.A. DUFFY, B.C.S.
 - 28 - day of May, 1975.

W.D. USHER & ASSOCIATES
 LAND SURVEYORS
 PRINCE GEORGE — B.C.
 6376 B

SECOND FLOOR
PARTS OF LOTS 1 TO 5 INCLUSIVE
SCALE: 1" = 10'

STRATA PLAN P.G.9 -----



D.A. Duffy
 D.A. DUFFY, B.C.S.
 - 28 - day of May, 1975.

W.D. USHER & ASSOCIATES
 LAND SURVEYORS
 PRINCE GEORGE — B.C.
 6376 B