

26-FF-226

STRATA PLAN OF  
LOT F, PLAN 19342  
DISTRICT LOT 934  
CARIBOO DISTRICT-BRITISH COLUMBIA  
SCALE: 1" = 20'

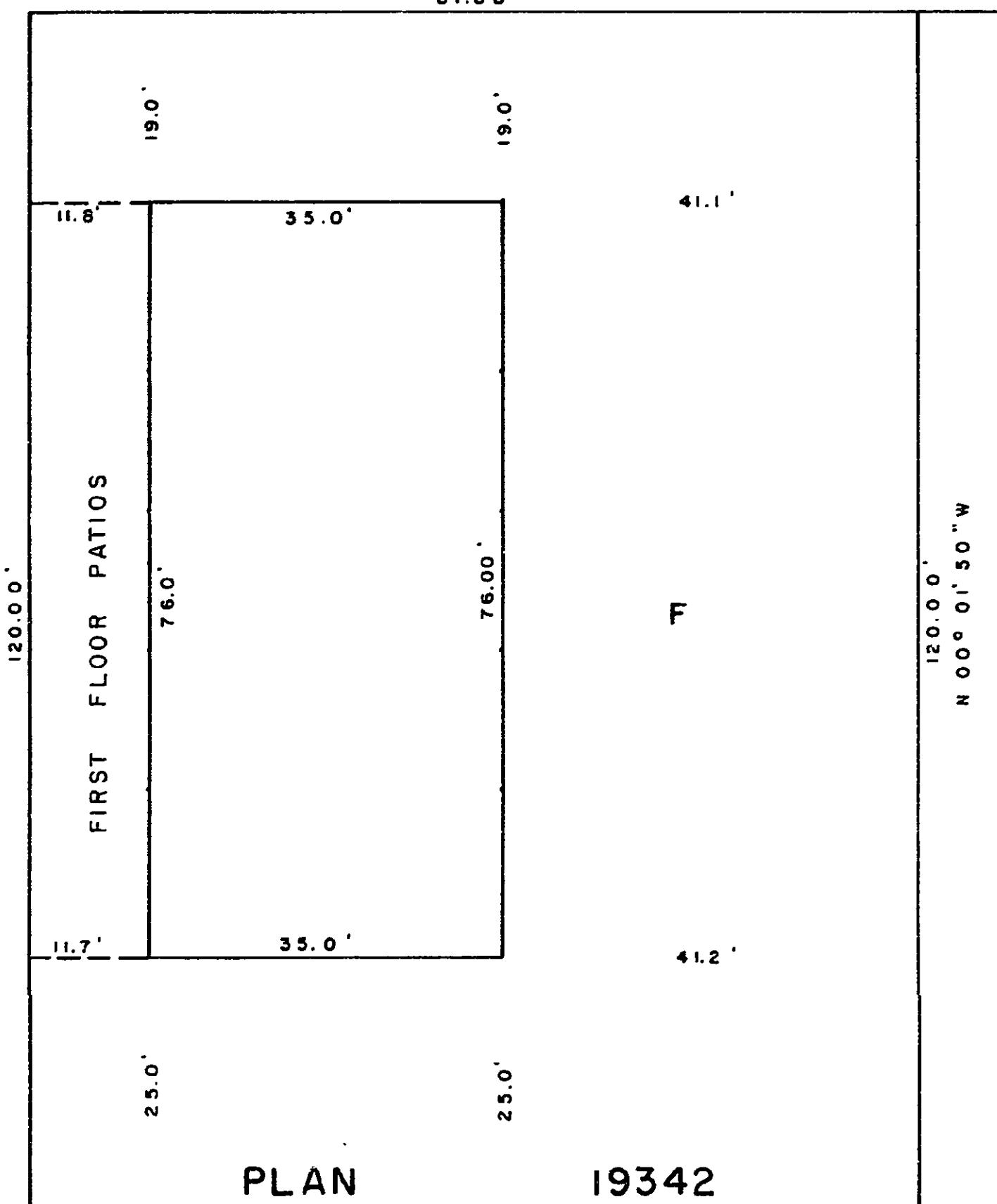
SHEET 1 OF 7 SHEETS

STRATA PLAN P.G. 11  
Deposited and registered in the Land  
Registry Office at Prince George, B.C.  
this 6 day of JANUARY, 1976.  
E. T. SCHOOLEY  
Registrar  
Per: LS

NOTE: Areas given for apartments include patios. F 7041

LANE

S 89° 49' 20" E  
87.88'



NORWOOD ONE  
2542-2560 DIEFENBAKER DRIVE  
PRINCE GEORGE - B. C.

The address for service of documents  
on this Strata Corporation is:

DUNGATE & BASSETT  
1460 - 6TH AVENUE  
PRINCE GEORGE - B.C.

I, DONALD A. DUFFY of the City of Prince  
George a British Columbia Land Surveyor,  
hereby certify that the building erected on  
the parcel described above is wholly within  
the external boundaries of that parcel.

D. A. Duffy  
B.C.L.S.

Dated at Prince George, B.C. this  
28 day of MAY, 1975

DIEFENBAKER DRIVE

BIDDLE HOLDING LTD.

[Signature]  
President

[Signature]  
Approving Officer

CANADA PERMANENT  
Mortgage  
Trust Corporation

[Signature]  
Approved by the City of Prince George,  
this 25 day of NOV, 1975.

[Signature]  
Approving Officer

W. D. USHER & ASSOCIATES  
LAND SURVEYORS  
PRINCE GEORGE - B. C.  
6376

SHEET 2 OF 7 SHEETS

STRATA PLAN P.G. 11

STRATA TITLES ACT

LOT NO.	SHEET NO.	FORM 1	FORM 2	FORM 3
		SCHEDULE OF UNIT ENTITLEMENT	SCHEDULE OF INTEREST UPON DESTRUCTION	SCHEDULE OF VOTING RIGHTS
		INTEREST UPON DESTRUCTION	INTEREST UPON DESTRUCTION	NUMBER OF VOTES
1	3, 4, 5	200,000	208,481	
2	3, 4, 5	200,000	194,346	
3	3, 4, 5	200,000	194,346	
4	3, 4, 5	200,000	194,346	
5	3, 4, 5	200,000	208,481	
AGGREGATE		1,000,000	1,000,000	

STATUTORY DECLARATION

I, the undersigned do solemnly declare that:  
I the undersigned am the duly authorized agent  
of the owner-developer.  
The strata plan is entirely for residential use.  
I make this solemn declaration conscientiously believing  
it to be true, and knowing that it is of the same force  
and effect as if made under oath.

Declared before me this 5 day of December, 1975  
[Signature]  
Notary Public

Accepted as to forms 1, 2 and 3.  
This 16<sup>th</sup> day of December, 1975

[Signature]  
Superintendent of Insurance

BIDDLE HOLDINGS LTD.

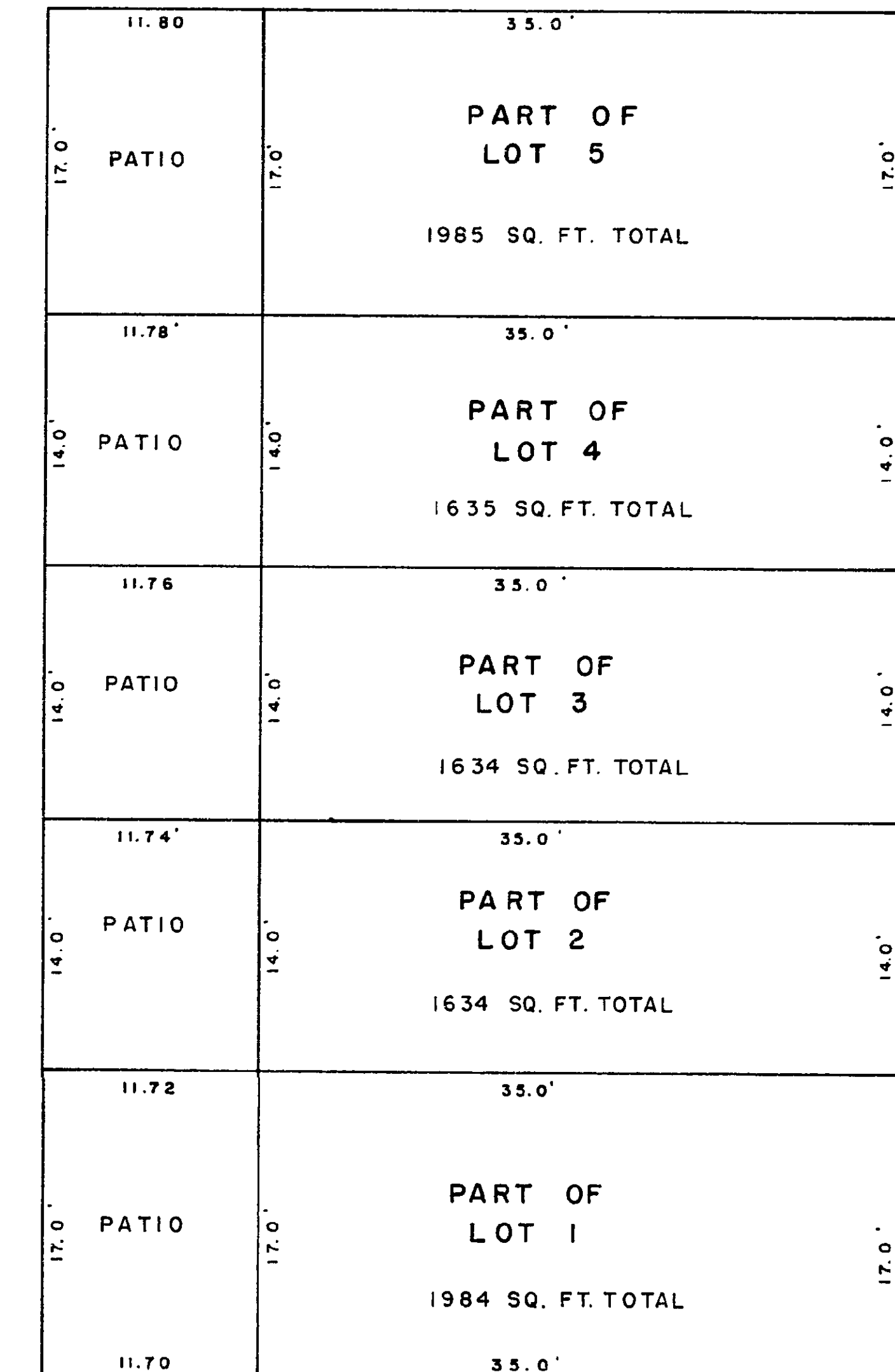
[Signature]  
President

W. D. USHER & ASSOCIATES  
LAND SURVEYORS  
PRINCE GEORGE - B. C.  
6376

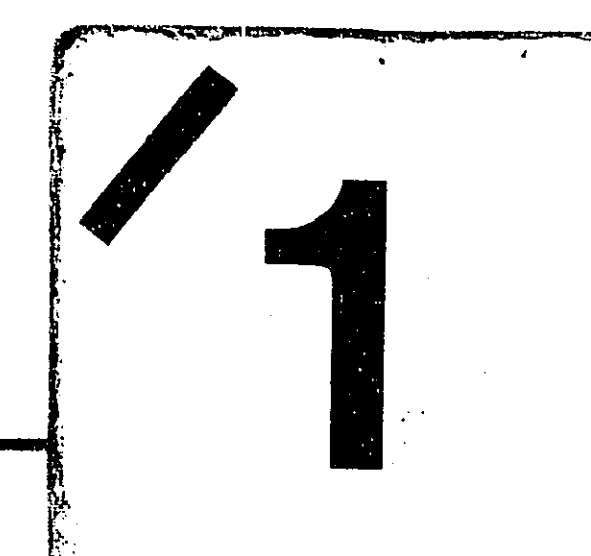
SHEET 3 OF 7 SHEETS

FIRST FLOOR  
PARTS OF LOTS 1 TO 5 INCLUSIVE  
SCALE: 1" = 10'

STRATA PLAN P.G. 11



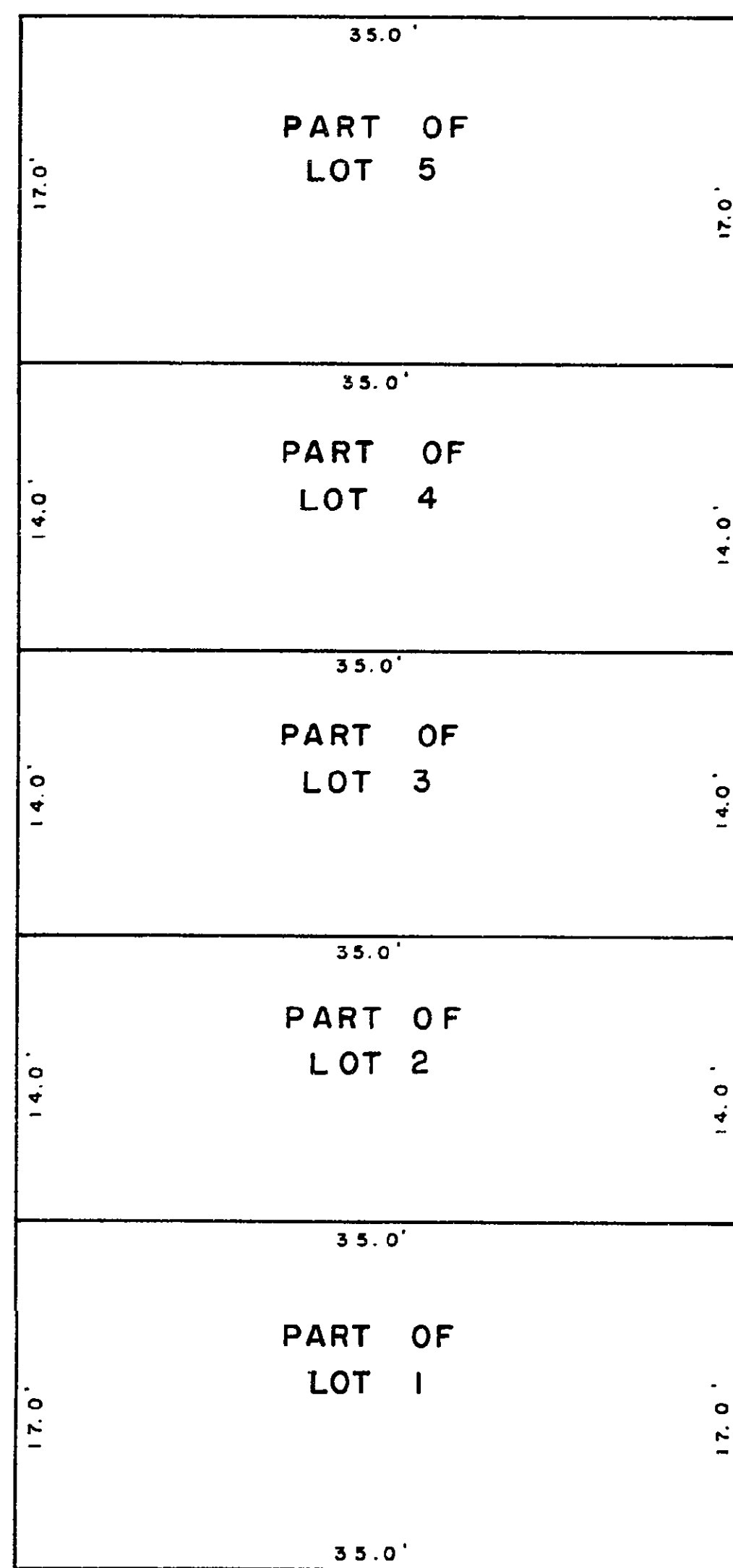
[Signature]  
D. A. DUFFY, B.C.L.S.  
-28- day of MAY, 1975



W. D. USHER & ASSOCIATES  
LAND SURVEYORS  
PRINCE GEORGE - B. C.  
6376

SECOND FLOOR  
PARTS OF LOTS 1 TO 5 INCLUSIVE  
SCALE: 1" = 10'

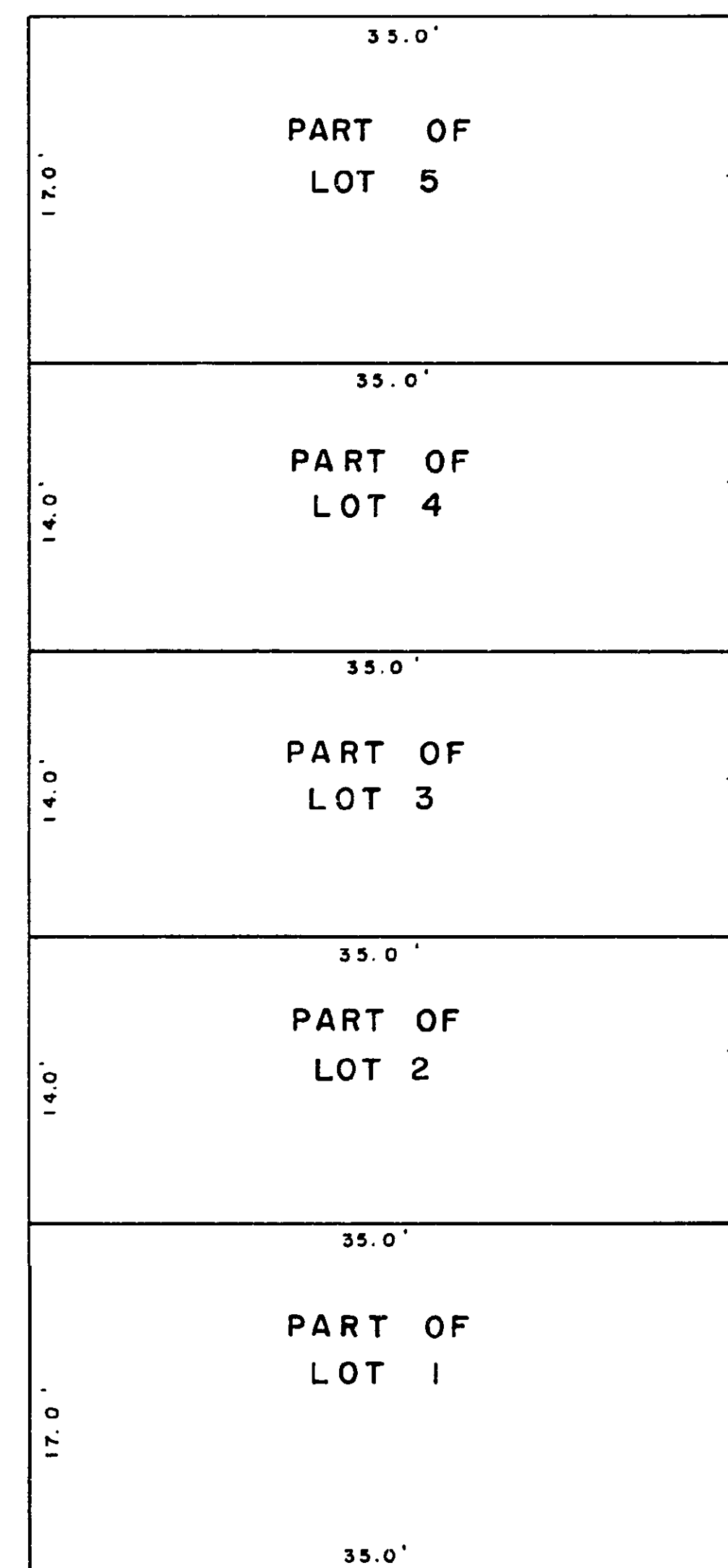
STRATA PLAN P.G. 11 -----



*D.A. Duffy*  
 D.A. DUFFY, B.C.L.S.  
 28 day of April, 1975.

BASEMENT FLOOR  
PARTS OF LOTS 1 TO 5 INCLUSIVE  
SCALE: 1" = 10'

STRATA PLAN P.G. 11 -----



*D.A. Duffy*  
 D.A. DUFFY, B.C.L.S.  
 28 day of April, 1975.