

26-FF-226

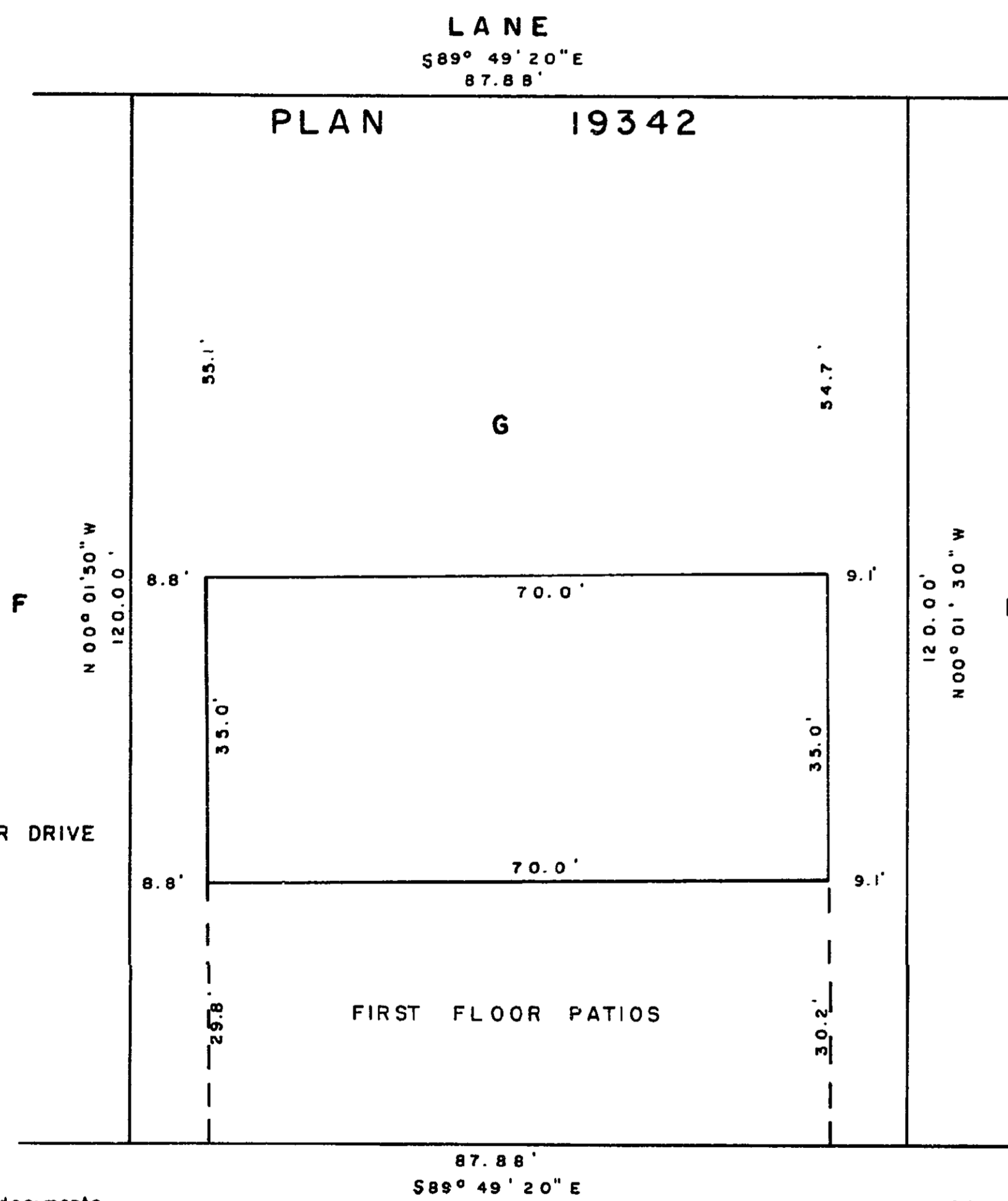
STRATA PLAN OF
LOT G, PLAN 19342
DISTRICT LOT 934
CARIBOO DISTRICT-BRITISH COLUMBIA
SCALE: 1" = 20'

SHEET 1 OF 7 SHEETS

STRATA PLAN P.G.10
Deposited and registered in the Land
Registry Office at Prince George, B.C.
this 6 day of JANUARY, 1976.

NOTE: Areas given for apartments include patios. F 7041

J.E.P. SCHOOLEY
Registrar part G.



NORWOOD TWO
1310-1332 DIEFENBAKER DRIVE
PRINCE GEORGE - B.C.

The address for service of documents
on this Strata Corporation is:

DUNGATE & BASSETT
1460 - 6 TH AVENUE
PRINCE GEORGE - B.C.

I, DONALD A. DUFFY of the City of Prince
George a British Columbia Land Surveyor,
hereby certify that the building erected
on the parcel described above is wholly within
the external boundaries of that parcel.

[Signature]
D.A. L.S.

BIDDLE HOLDING LTD.

[Signature]
Pres.

CANADA PERMANENT
~~TRUST CORPORATION~~

[Signature]
Approved by the City of Prince George,
this 25 day of NOV, 1975.

[Signature]
Approving Officer

W.D. USHER & ASSOCIATES
LAND SURVEYORS
PRINCE GEORGE - B.C.
6376 A

Dated at Prince George, B.C. this
28 day of 22, 1975.

STRATA PLAN P.G.10

STRATA TITLES ACT

LOT NO.	SHEET NO.	FORM 1	FORM 2	FORM 3
		SCHEDULE OF UNIT ENTITLEMENT	SCHEDULE OF INTEREST UPON DESTRUCTION	SCHEDULE OF VOTING RIGHTS
		UNIT ENTITLEMENT	INTEREST UPON DESTRUCTION	NUMBER OF VOTES
1	3, 4, 5	200,000	200,000	
2	3, 4, 5	200,000	200,000	
3	3, 4, 5	200,000	200,000	
4	3, 4, 5	200,000	200,000	
5	3, 4, 5	200,000	200,000	
AGGREGATE		1,000,000	1,000,000	

STATUTORY DECLARATION

I, the undersigned do solemnly declare that:
I the undersigned am the duly authorized agent
of the owner-developer.
The strata plan is entirely for residential use.

I make this solemn declaration conscientiously believing
it to be true, and knowing that it is of the same force
and effect as if made under oath.

Declared before me this 5 day of December, 1975.

[Signature]
Notary Public

Accepted as to forms 1, 2 and 3
This 16 day of December, 1975

[Signature]
for Superintendent of Insurance

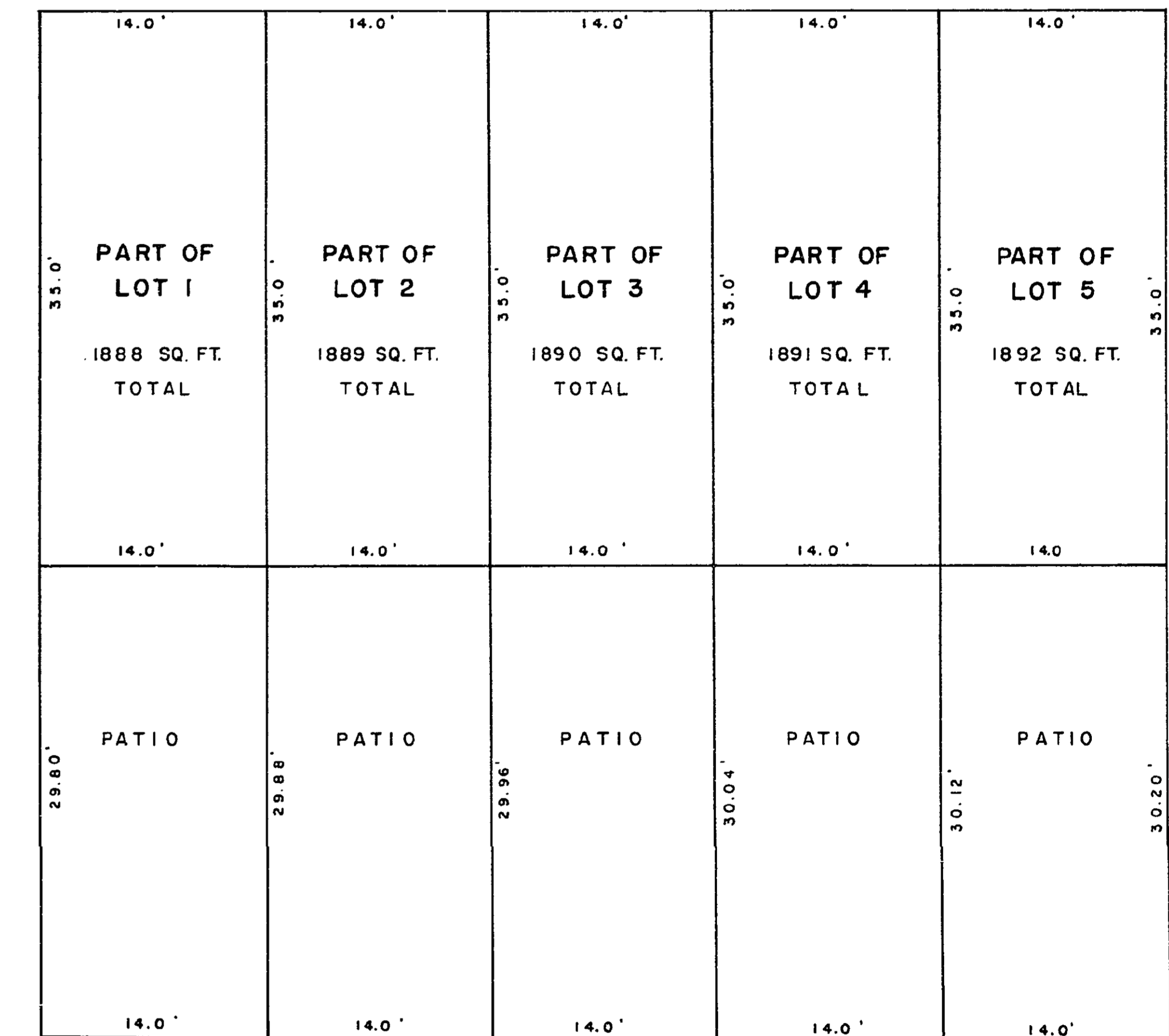
BIDDLE HOLDINGS LTD.

[Signature]
President

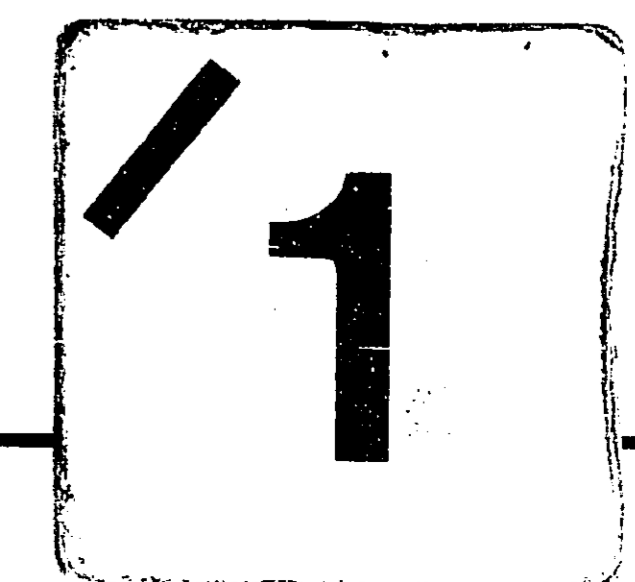
W.D. USHER & ASSOCIATES
LAND SURVEYORS
PRINCE GEORGE - B.C.
6376 A

FIRST FLOOR
PARTS OF LOTS 1 TO 5 INCLUSIVE
SCALE: 1" = 10'

STRATA PLAN P.G.10



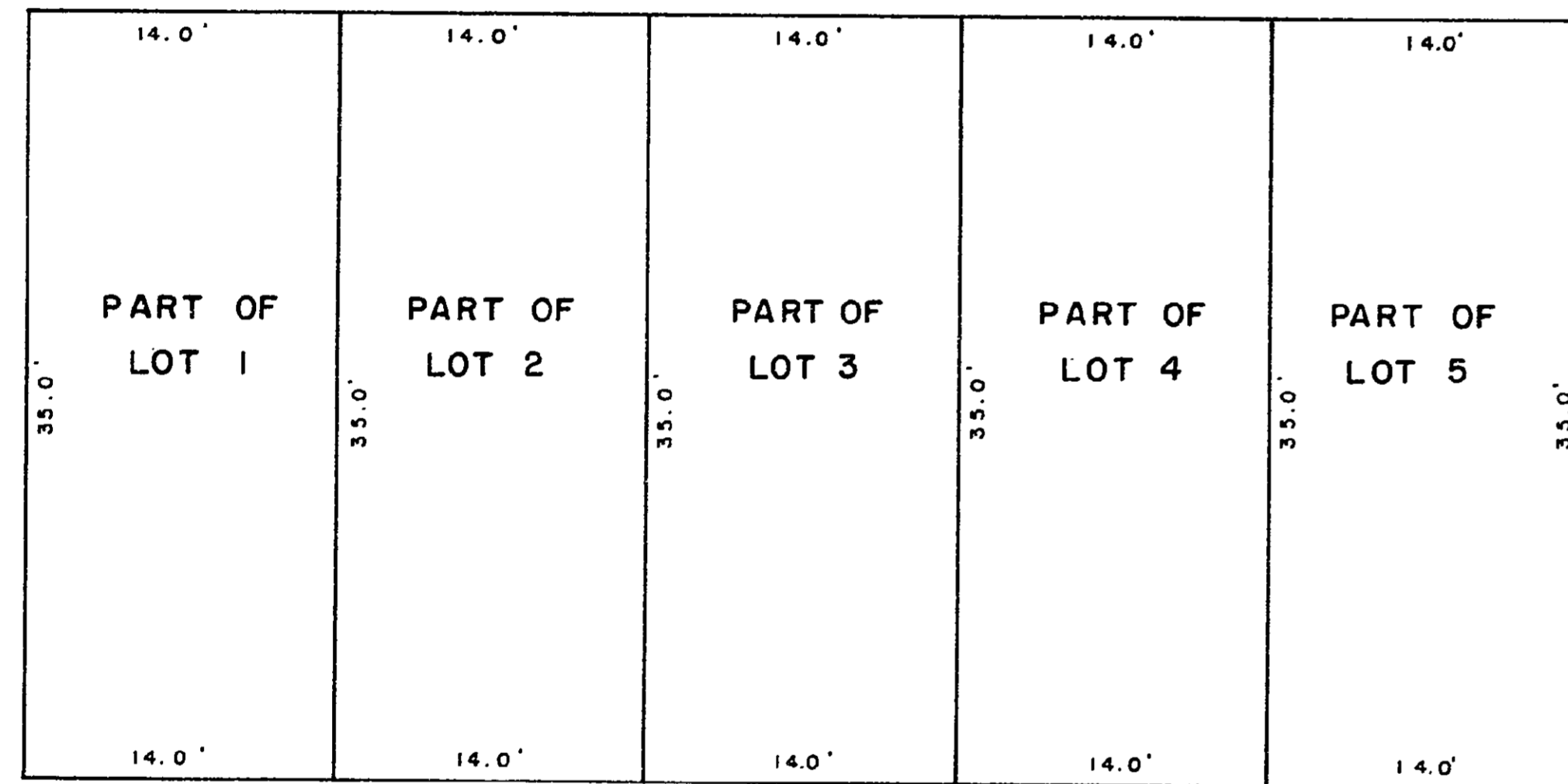
[Signature]
D.A. DUFFY, B.C.L.S.
28 day of 22, 1975.



W.D. USHER & ASSOCIATES
LAND SURVEYORS
PRINCE GEORGE - B.C.
6376 A

SECOND FLOOR
PARTS OF LOTS 1 TO 5 INCLUSIVE
SCALE: 1" = 10'

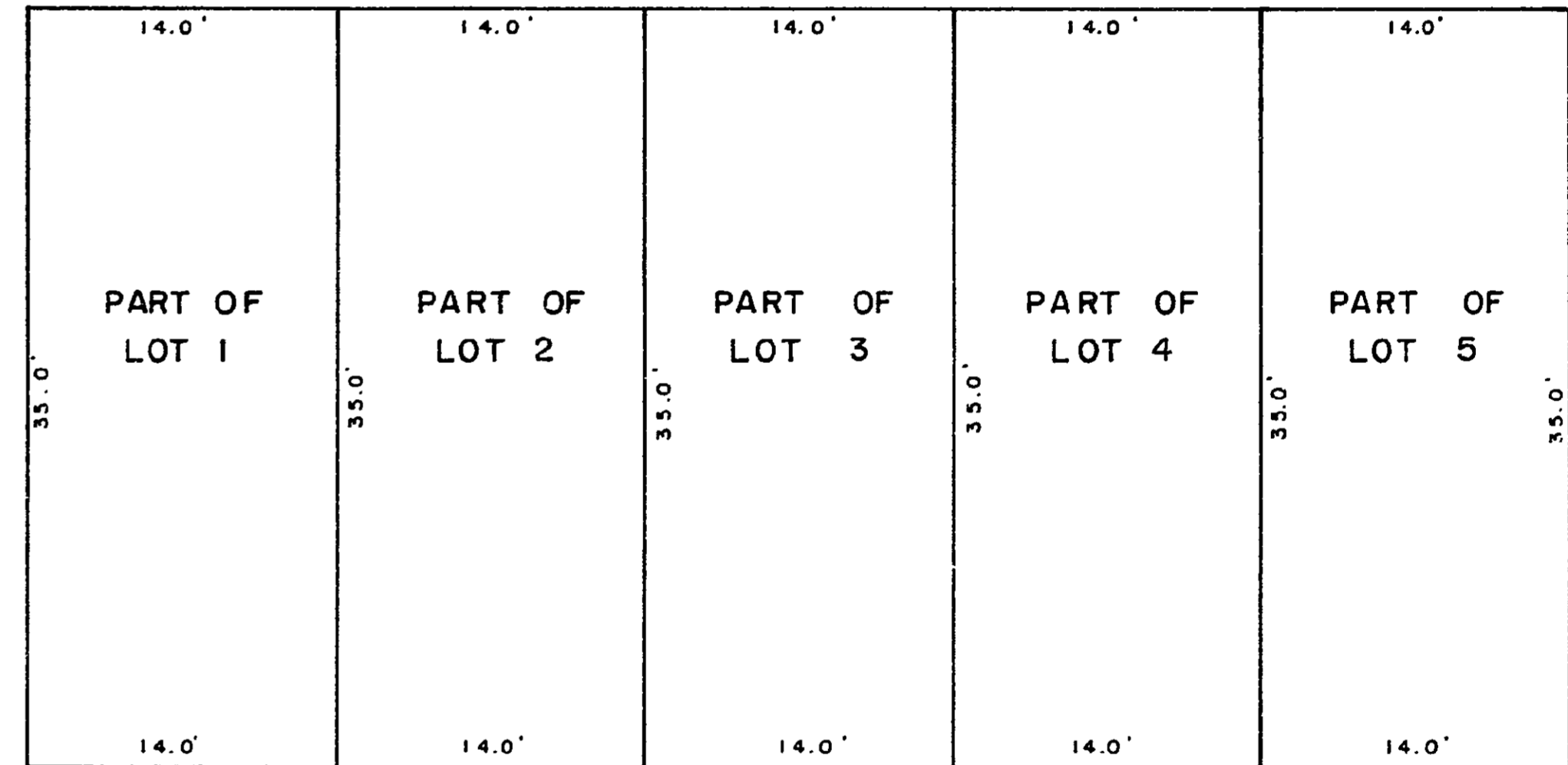
STRATA PLAN P.G. 10 -----



[Signature]
 D. A. DUFFY, B.C.L.S.
 22 day of May, 1975.

BASEMENT FLOOR
PARTS OF LOTS 1 TO 5 INCLUSIVE
SCALE: 1" = 10'

STRATA PLAN P.G. 10 -----



[Signature]
 D. A. DUFFY, B.C.L.S.
 23 day of May, 1975.