

REFERENCE PLAN OF EASEMENT AND
LEASE OF A BUILDING ON
REM. PARCEL A (PLAN 18353), PLAN 1268
DISTRICT LOT 343
CARIBOO DISTRICT
B.C.G.S. 93G.097

PURSUANT TO SECTION 99 OF THE LAND TITLE ACT.



SCALE: 1 = 1000
ALL DISTANCES SHOWN ARE IN METRES.

THIS PLAN SHOWS GROUND-LEVEL MEASURED DISTANCES,
PRIOR TO COMPUTATION OF U.T.M. COORDINATES, MULTIPLY
BY COMBINED FACTOR 0.99951615.

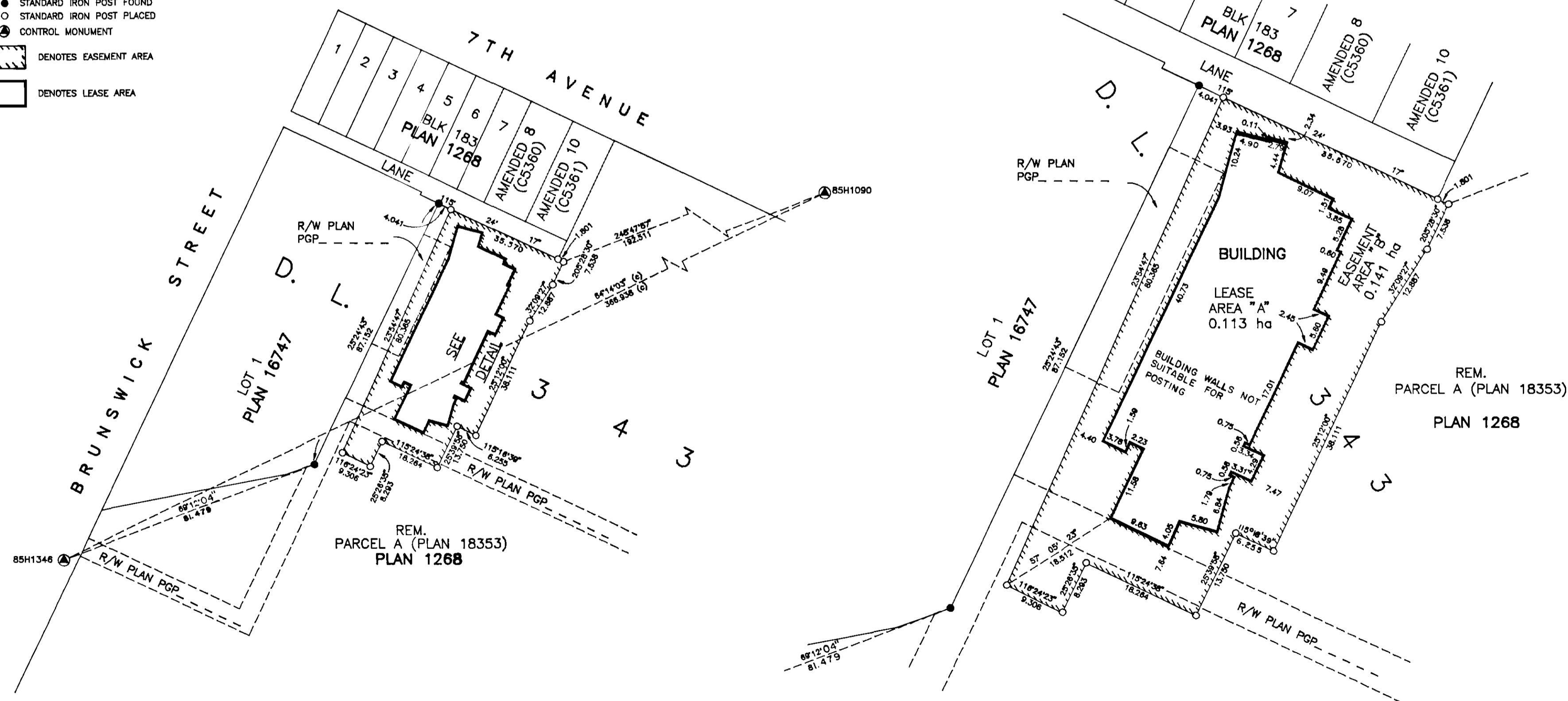
GRID BEARINGS ARE DERIVED FROM OBSERVATIONS
BETWEEN CONTROL MONUMENTS 85H1090, AND 85H1346,
INTEGRATED SURVEY AREA NUMBER 39, PRINCE GEORGE.

LEGEND

- STANDARD IRON POST FOUND
- STANDARD IRON POST PLACED
- ⊙ CONTROL MONUMENT
- DENOTES EASEMENT AREA
- DENOTES LEASE AREA



DETAIL
SCALE=1 : 500



(PT 8837)

PLAN No. PGP 47745

DEPOSITED IN THE LAND TITLE OFFICE
AT PRINCE GEORGE, B.C., THIS 08
DAY OF MARCH, 20 02

LINDA KILBANE
REGISTRAR Pa:KM

I, RONALD L. JOHNS, A BRITISH COLUMBIA LAND
SURVEYOR, OF PRINCE GEORGE, IN BRITISH COLUMBIA,
CERTIFY THAT I WAS PRESENT AT AND PERSONALLY
SUPERINTENDED THE SURVEY REPRESENTED BY THIS
PLAN AND THAT THE SURVEY AND PLAN ARE CORRECT.
THE SURVEY WAS COMPLETED ON THE 24TH DAY OF
MAY, 2000.

RL JOHNS, B.C.L.S., C.L.S.

THIS PLAN LIES WITHIN THE FRASER-
FORT GEORGE REGIONAL DISTRICT.

R. L. JOHNS LAND SURVEYING LTD.
LEGAL AND ENGINEERING SURVEYS
240 VICTORIA STREET
PRINCE GEORGE, B. C. V2L 2J4
PHONE: (250)582-5759
FAX: (250)582-5703
2000051 CCS - 3-11
Y1 - 32-33