

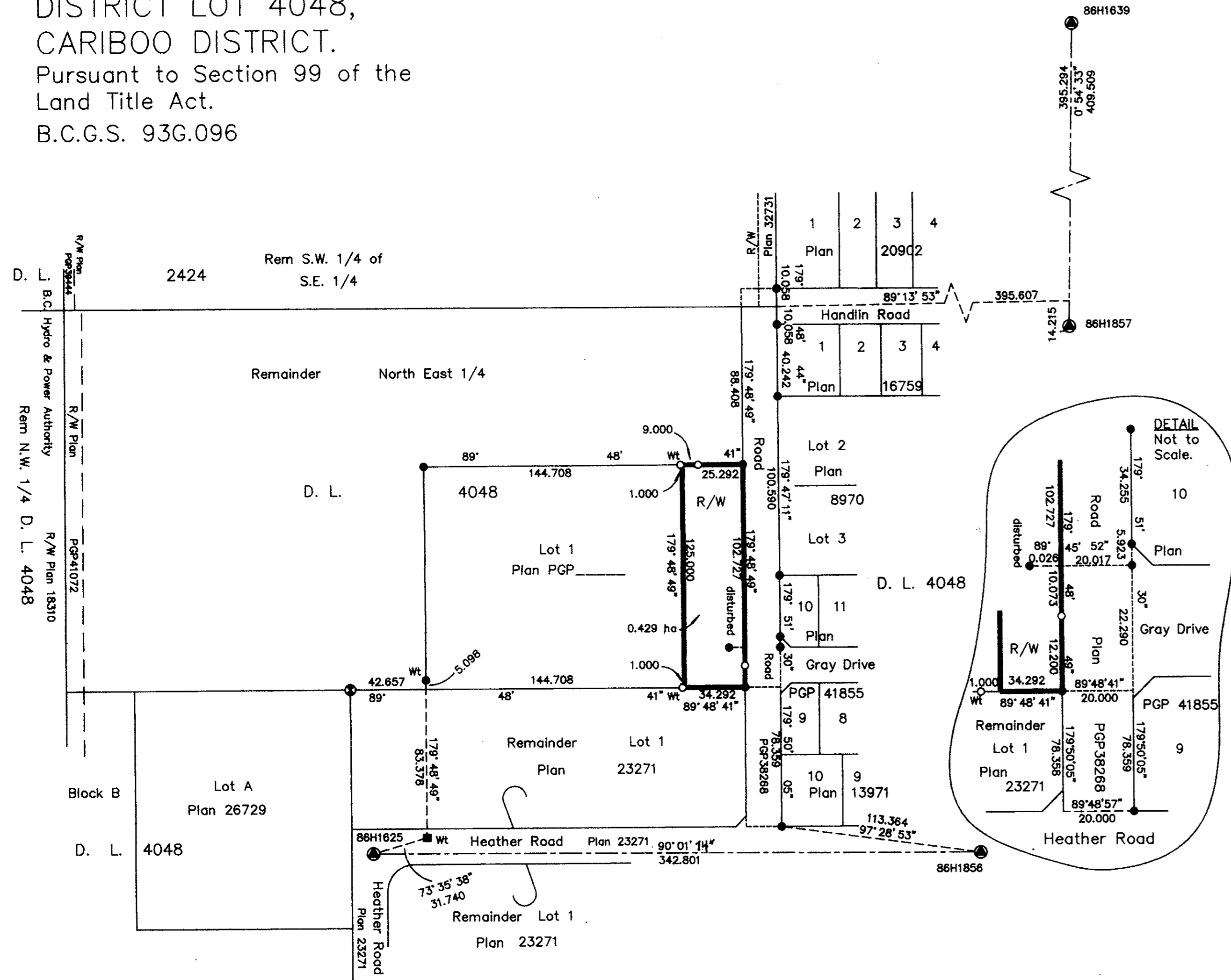
REFERENCE PLAN OF STATUTORY
RIGHT OF WAY ON PART OF
LOT 1, PLAN PGP 47418,
DISTRICT LOT 4048,
CARIBOO DISTRICT.

Pursuant to Section 99 of the
Land Title Act.
B.C.G.S. 93G.096

PLAN NO. PGP 47419

Deposited in the Land Title Office at Prince
George this 21 day of DEC. 2001.

REGISTRAR



Scale: 1 : 2000 (Distances are in metres)

Grid bearings are derived from observations between
control monuments 86H1856 and 86H1625, integrated
survey area number 39, City of Prince George, B.C.

Note: This plan shows ground level measured
distances. Prior to computation of U.T.M.
co-ordinates multiply by the combined
factor 0.99948109

- LEGEND**
- Lead Plug Found
 - Standard Capped Post Found
 - Standard Iron Post Found
 - Standard Iron Post Placed
 - Control Monument Found

I, Gordon Kilbride, a British Columbia Land Surveyor of
Prince George in British Columbia, certify that I was
present at and personally superintended the survey
represented by this plan and that the survey and plan
are correct. The survey was completed on the 20 day
of March, 1998.

Gordon Kilbride
Gordon Kilbride, B.C.L.S.

This plan lies within the Fraser-Fort
George Regional District.

KILBRIDE LAND SURVEYING LTD. British Columbia Land Surveyors Prince George, B.C. Ph: (250) 562-1196 Fax: 562-3656		
F.B.- RA	D.L.- 4048	FILE No. 980063RW