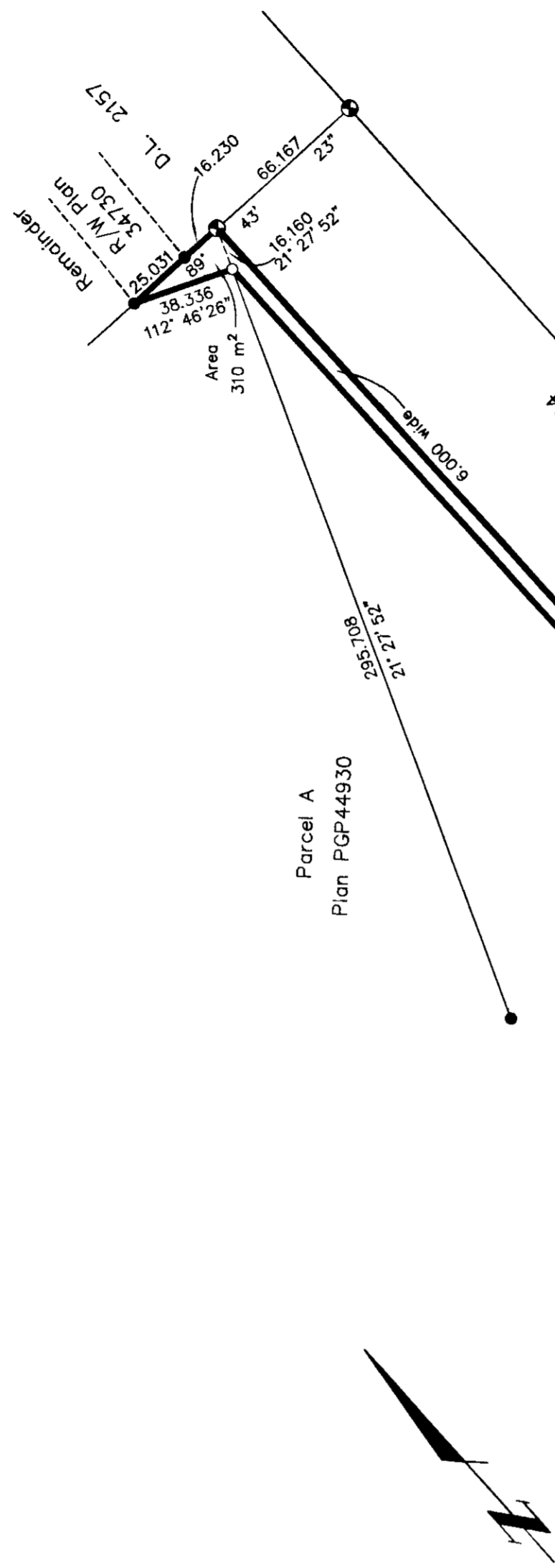


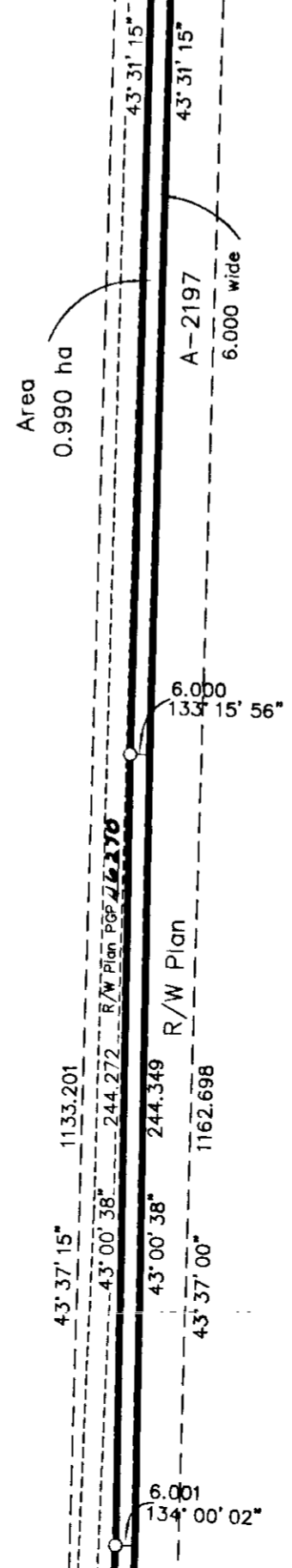
PLAN NO. PGP 46271

Deposited in the Land Title Office at Prince George this 1 day of Dec. 2000.

Dale L. Keown
REGISTRAR

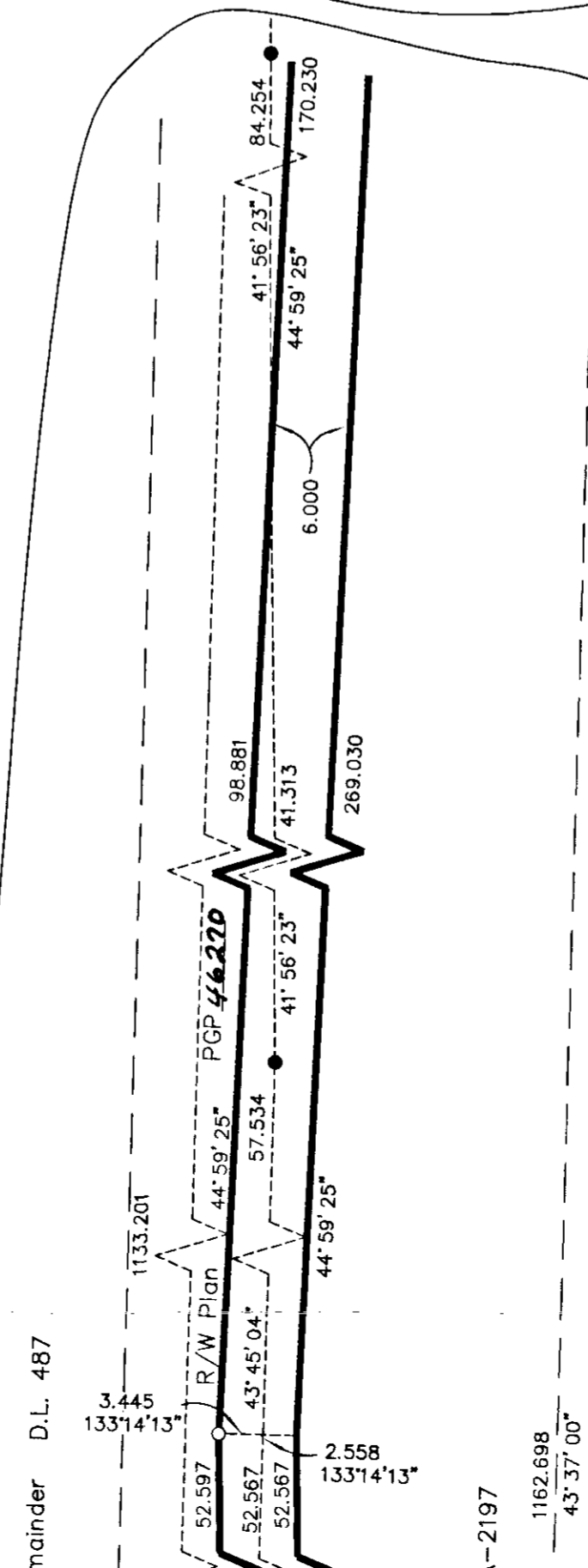


Remainder D.L. 487



Remainder D.L. 487

BOOK OF REFERENCE	
DESCRIPTION	AREA
Parcel A, Plan PGP 44930,	310 m ²
Rem. D.L. 487	0.990 ha



I, Dale L. Keown, a British Columbia Land Surveyor, of Prince George, in British Columbia, certify that I was present at and personally superintended the survey represented by this plan, and that the survey and plan are correct. This survey was completed on the 2nd day of November, 2000.

Reviewed and verified correct.

D. Downer
Survey & Crossing Coordinator
BCR Properties Ltd.
Project #609A

Dale L. Keown
Dale L. Keown, B.C.L.S.

This plan lies within the Fraser-Fort George Regional District.

KILBRIDE LAND SURVEYING LTD.
British Columbia Land Surveyors
Prince George, B.C.
Ph: (250) 562-1196 Fax: 562-3656
F.B.- RA D.L.- 487 File No. - 000231

REFERENCE PLAN OF EASEMENT WITHIN PARCEL A, PLAN PGP44930, DISTRICT LOT 487 AND REMAINDER OF DISTRICT 487, CARIBOO DISTRICT.

Pursuant to Section 99
of the Land Title Act.

B.C.G.S. 93G:087

Scale: 1 : 2000 (Distances are in metres)

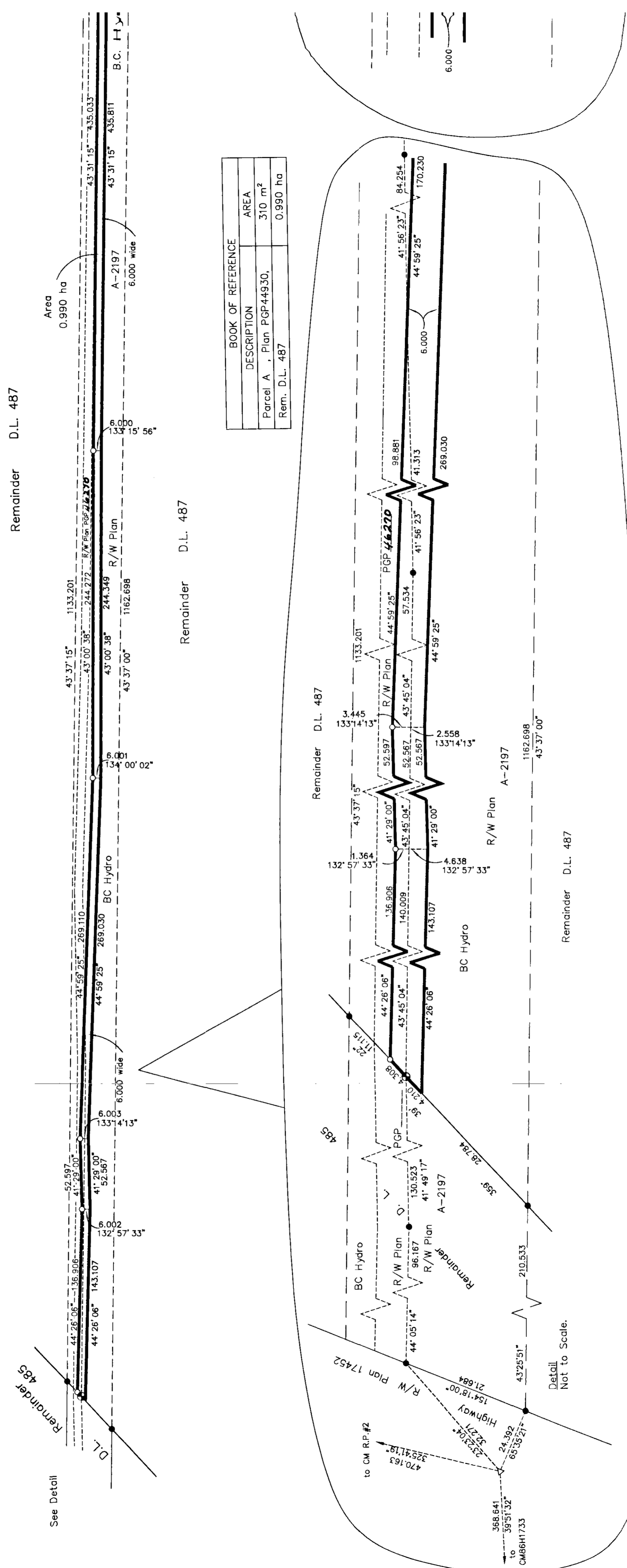


Grid bearings are derived from observations between
control monuments 89H735 and 822, integrated
survey number 39, City of Prince George, B.C.
NAD83 (CSRS)

Note: This plan shows ground level measured
distances. Prior to computation of U.T.M.
co-ordinates multiply by the combined
factor

LEGEND

- Standard Capped Post Found
- Standard Iron Post Found
- Standard Iron Post Placed



BOOK OF REFERENCE	
DESCRIPTION	AREA
Parcel A, Plan PGP44930,	310 m ²
Rem. D.L. 487	0.990 ha

Reviewed and verified correct

RP Dawson
Surveyor
BCS Properties Ltd.
Project #809A