

REFERENCE PLAN OF STATUTORY
RIGHT OF WAY WITHIN THE
REMAINDERS OF DISTRICT
LOTS 485 AND 487, CARIBOO
DISTRICT.

Pursuant to Section 113
of the Land Title Act.
B.C.G.S. 93G.087

Scale: 1 : 2000 (Distances are in metres)

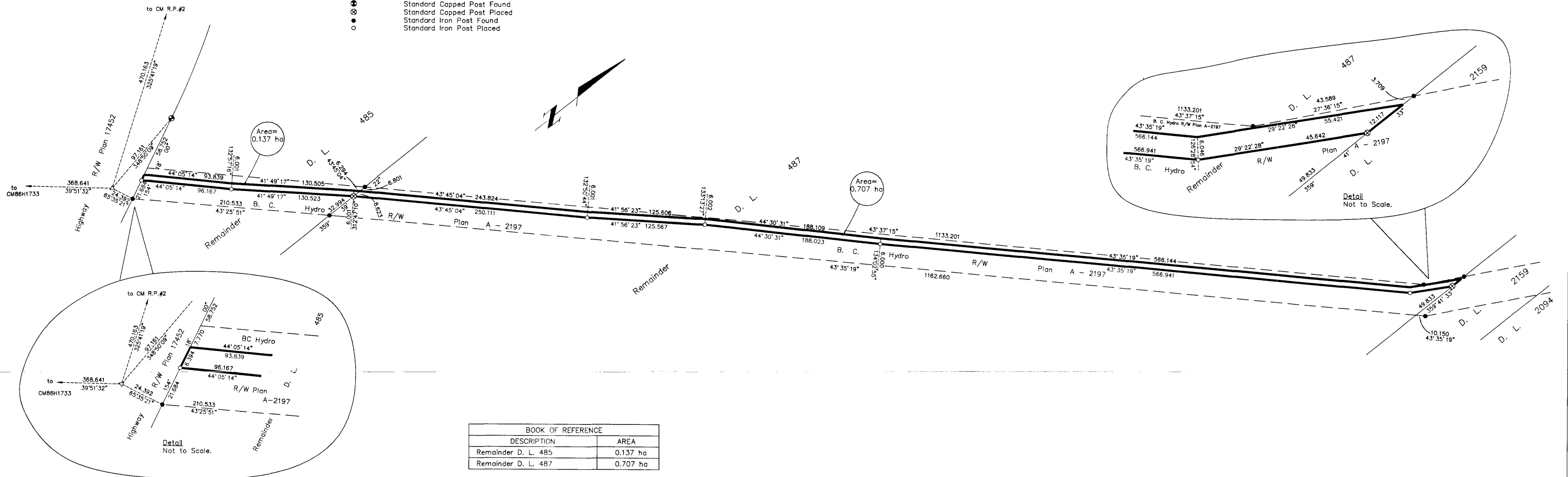


Grid bearings are derived from observations between control monuments 86H1733 and RP2, integrated survey area number 39, City of Prince George, B.C. NAD83(CSR5)

Note: This plan shows ground level measured distances. Prior to computation of U.T.M. co-ordinates multiply by the combined factor 0.9995131

LEGEND

- ⊙ Standard Capped Post Found
- ⊗ Standard Capped Post Placed
- Standard Iron Post Found
- Standard Iron Post Placed



BOOK OF REFERENCE	
DESCRIPTION	AREA
Remainder D. L. 485	0.137 ha
Remainder D. L. 487	0.707 ha

PLAN NO. PGP 46270

Deposited in the Land Title Office at Prince George this 1 day of DEC. 2000.

Dale L. Keown
REGISTRAR PP43321

I, Dale L. Keown, a British Columbia Land Surveyor, of Prince George, in British Columbia, certify that I was present at and personally superintended the survey represented by this plan, and that the survey and plan are correct. The survey was completed on the 2nd day of October, 2000.

Reviewed and verified correct

R. Dawson
Survey & Crossing Coordinator
BCR Properties Ltd.
Project #8134

Dale L. Keown
Dale L. Keown, B.C.L.S.

This plan lies within the Fraser-Fort George Regional District.

KILBRIDE LAND SURVEYING LTD.
British Columbia Land Surveyors
Prince George, B.C.
Ph: (250) 562-1196 Fax: 562-3656

F.B.- RA D.L.- 485/487 File No. -000170RW