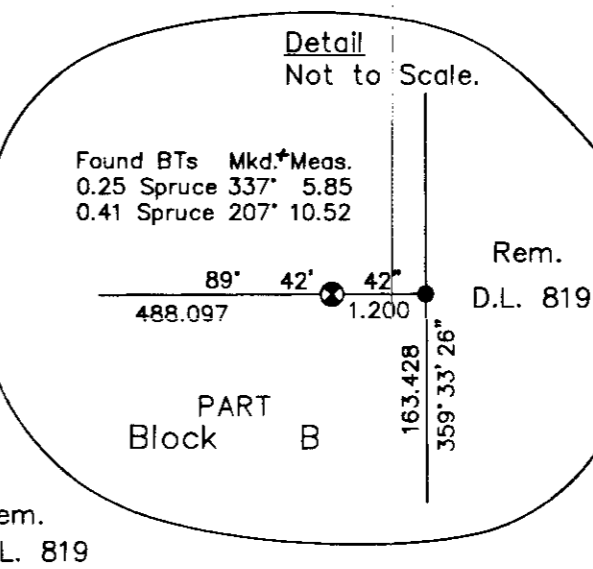
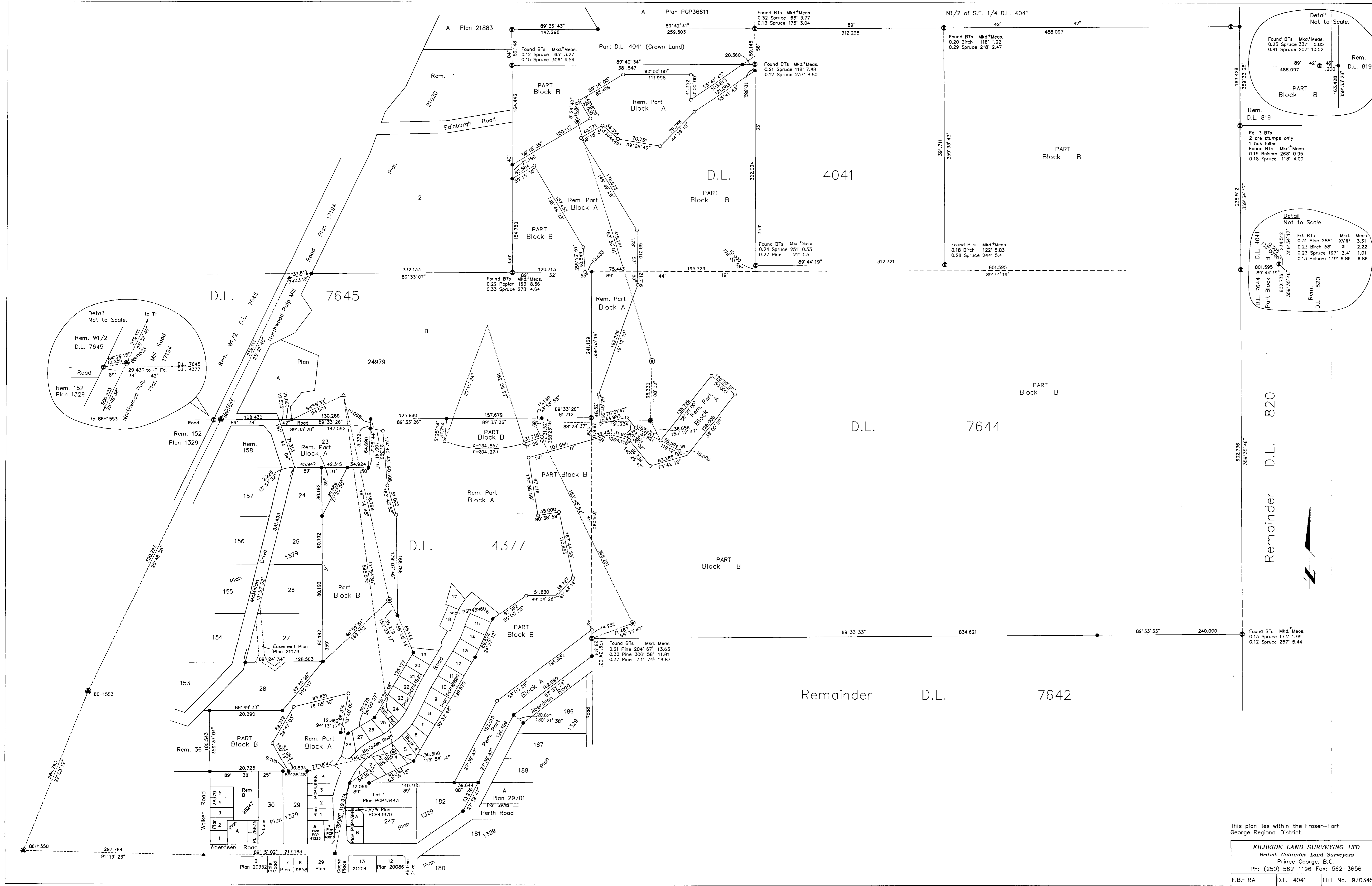


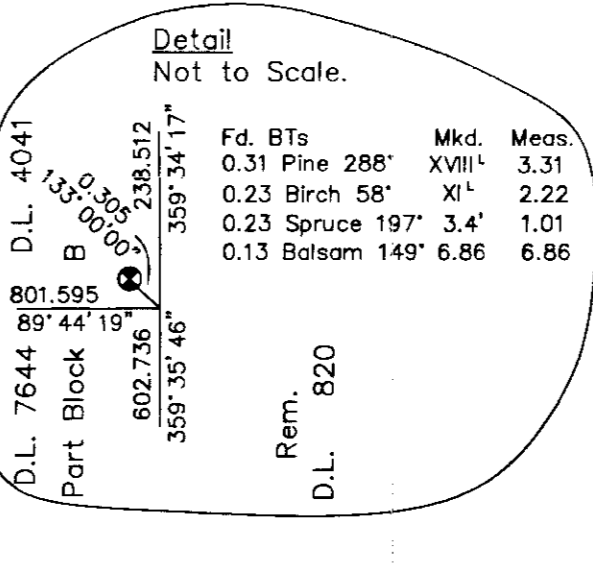
PLAN NO. PGP 46241

Deposited in the Land Title Office at Prince George this 20 day of November 2000.



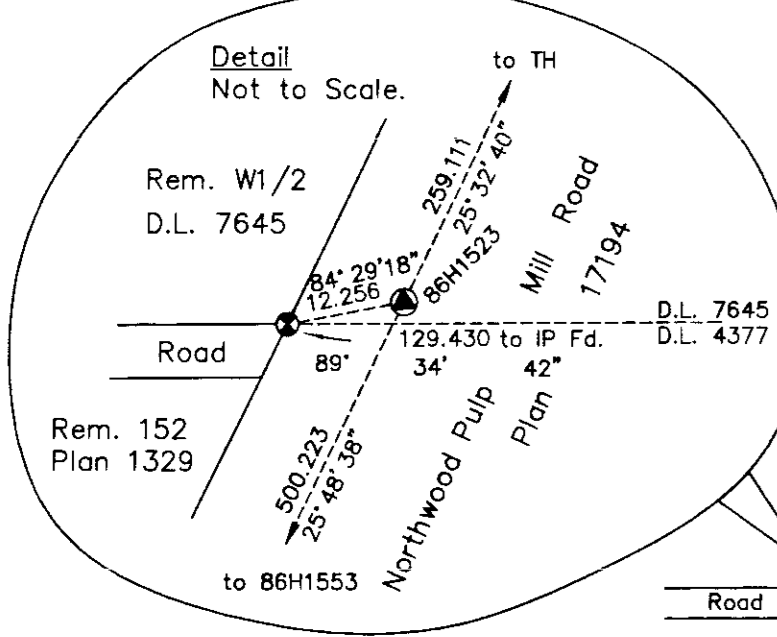
Rem. D.L. 819

Found B.T.s Mkt. Meas.
 0.20 Spruce 137' 5.85
 0.41 Spruce 207' 10.52
 0.12 Spruce 237' 8.80



Rem. D.L. 820

Found B.T.s Mkt. Meas.
 0.18 Birch 122' 5.83
 0.28 Spruce 244' 5.4
 0.13 Spruce 149' 6.96
 0.31 Pine 208' X/III 3.31
 0.23 Birch 58' X/I 2.22
 0.23 Spruce 197' 3.4' 1.01
 0.13 Birch 149' 6.96



Rem. W1/2 D.L. 7645

Rem. 152 Plan 1329

POSTING PLAN OF REMAINDER BLOCK A OF DISTRICT LOTS 4041, 4377 AND 7644 AND BLOCK B OF DISTRICT LOTS 4041, 4377 AND 7644, CARIBOO DISTRICT.

Pursuant to Section 68 of the Land Title Act.

B.C.G.S. 93G.097

Scale: 1 : 2500

Grid bearings are derived from observations between central monuments 86H1553 and 86H1523, integrated survey area number 39, City of Prince George, B.C.

Note: This plan shows ground level measured distances. Prior to computation of U.T.M. co-ordinates multiply by the combined factor 0.999500

LEGEND
 All distances are in metres and decimals thereof unless otherwise indicated.
 Bearings to bearing trees are magnetic.

- Standard Copper Post Found
- Standard Iron Post Found
- Standard Iron Post Placed
- Helm Control Monument
- Control Monument
- △ Traverse Hub Placed
- ▲ Traverse Hub Found
- Standard Concrete Post Found

I, Dale L. Keown, a British Columbia Land Surveyor of Prince George in British Columbia, certify that I was present at and personally superintended the survey represented by this plan and that the survey and plan are correct. The survey was completed on the 21st day of September, 2000.

Dale Keown
 Dale L. Keown, B.C.L.S.

This plan lies within the Fraser-Fort George Regional District.

KILBRIDE LAND SURVEYING LTD.
 British Columbia Land Surveyors
 Prince George, B.C.
 Ph: (250) 562-1196 Fax: 562-3656

F.B. - RA D.L. - 4041 FILE No. - 970345RP

DUPLICATE COPY

The survey represented by this plan was carried out for the Ministry of Environment, Lands and Parks.

Dale Keown
 Surveyor General
 Victoria, B.C. November 15, 2000.