

**EXPLANATORY PLAN OF STATUTORY RIGHT OF WAY
OVER PART OF BLOCK C, D.L. 1432, CARIBOO DISTRICT
EXCEPT PLANS 21094, 22207, PGP37876, PGP37922 + H735**

B.C.G.S. 93G.087

PLAN PGP 45969

DEPOSITED IN THE LAND TITLE OFFICE AT PRINCE GEORGE B.C.
THIS 27 DAY OF SEPTEMBER, 2000

SCALE 1:125



ALL DISTANCES ARE IN METRES AND DECIMALS THEREOF UNLESS OTHERWISE INDICATED

INTEGRATED SURVEY AREA No.39 - PRINCE GEORGE

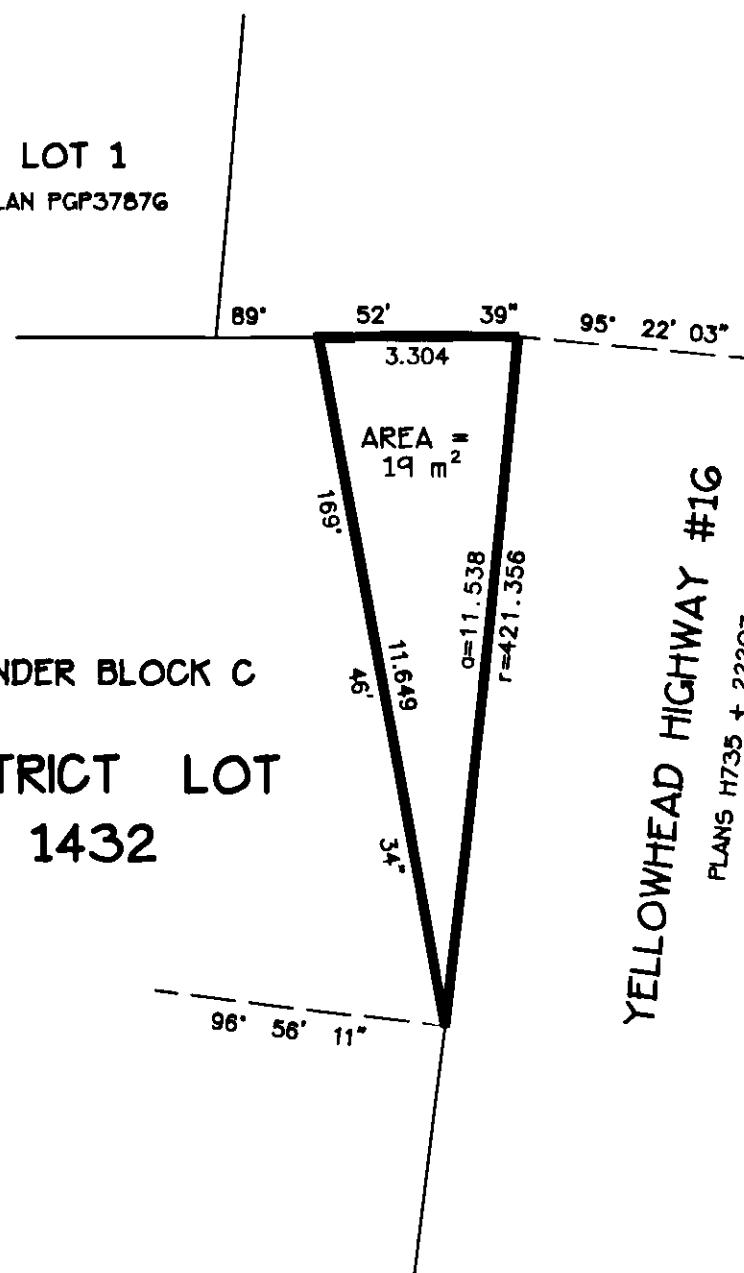
GRID BEARINGS ARE DERIVED FROM PLAN PGP37876

AREA REQUIRED = 19 SQUARE METRES

RIGHT OF WAY REQUIRED FOR DISTRIBUTION OF ELECTRICAL POWER

LOT 1
PLAN PGP37876

REMAINDER BLOCK C
DISTRICT LOT
1432



Linda Hildebrand
PP34302 REGISTRAR

DEPOSITED PURSUANT TO SECTION 99C(1)(e) OF THE LAND TITLE ACT

THIS PLAN LIES WITHIN THE FRASER - FORT GEORGE REGIONAL DISTRICT

CERTIFIED CORRECT ACCORDING TO LAND TITLE OFFICE RECORDS

THIS 24th DAY OF FEBRUARY, 2000.

J. W. Thomas
B.C.L.S.