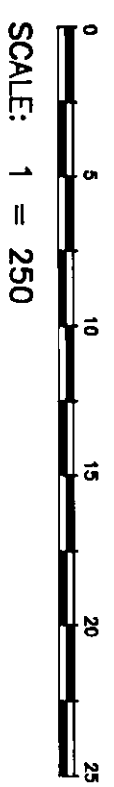


PLAN OF STATUTORY RIGHT OF WAY
THROUGH LOT 61, PLAN 27754
DISTRICT LOT 905
CARIBOO DISTRICT

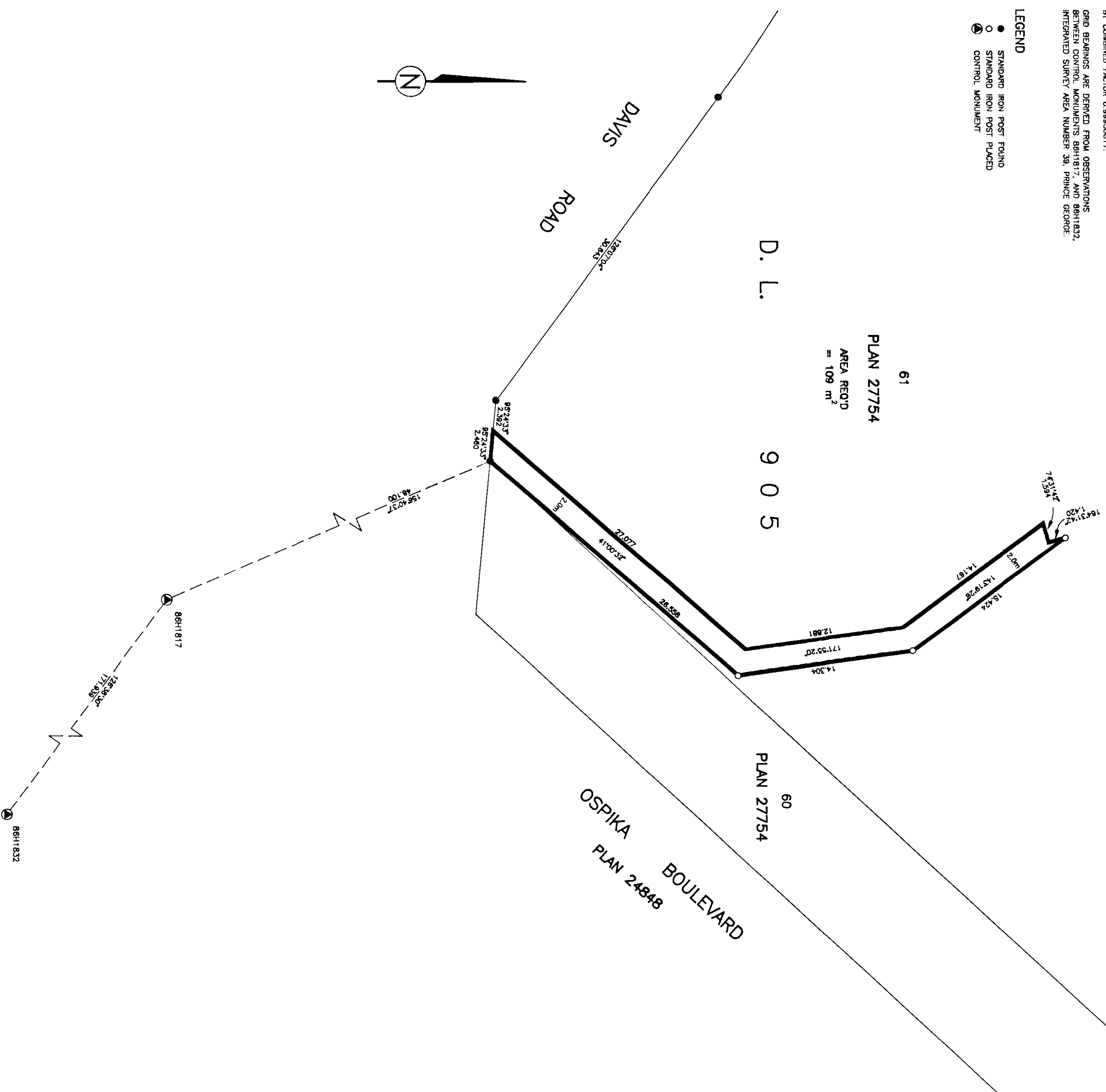
B.C.G.S. 93G.087
PURSUANT TO SECTION 113 OF THE LAND TITLE ACT



ALL DISTANCES ARE SHOWN IN METRES.

THIS PLAN SHOWS GROUND-LEVEL MEASURED DISTANCES, PRIOR TO COMPUTATION OF UTM. COORDINATES, MULTIPLY BY COMBINED FACTOR 0.99950017.
GRID BEARINGS ARE DERIVED FROM OBSERVATIONS BETWEEN CONTROL MONUMENTS 88H1817, AND 88H1822, INTEGRATED SURVEY AREA NUMBER 39, PRINCE GEORGE.

- LEGEND
- STANDARD IRON POST FOUND
 - STANDARD IRON POST PLACED
 - ⊙ CONTROL MONUMENT



PLAN No. PGP 45968
DEPOSITED IN THE LAND TITLE OFFICE
AT PRINCE GEORGE, B.C., THIS 21st
DAY OF September, 2000

Linda Kilbridge/pc
REGISTRAR
AP 34297

I, RONALD L. JOHNS, A BRITISH COLUMBIA LAND SURVEYOR, OF PRINCE GEORGE, IN BRITISH COLUMBIA, CERTIFY THAT I WAS PRESENT AT AND PERSONALLY SUPERINTENDED THE SURVEY REPRESENTED BY THIS PLAN AND THAT THE SURVEY AND PLAN ARE CORRECT. THE SURVEY WAS COMPLETED ON THE 3RD DAY OF SEPTEMBER, 1998.

R. L. Johns
R.L. JOHNS, B.C.L.S., C.L.S.

THIS PLAN LIES WITHIN THE FRASER-FORT GEORGE REGIONAL DISTRICT.

R. L. JOHNS LAND SURVEYING LTD.
LEGAL AND ENGINEERING SURVEYS
224 OSPIKA STREET, V2L 2J4
PRINCE GEORGE, B.C.
PHONE: (250)582-5759
FAX: (250)582-5703
98147R B83-5