

PLAN OF STATUTORY RIGHT OF WAY  
THROUGH REM. LOT A, PLAN 24370 AND  
REM. LOT B, PLAN 32852  
DISTRICT LOT 1574, CARIBOO DISTRICT  
B.C.G.S. 93G.097

PURSUANT TO SECTION 113 OF THE LAND TITLE ACT



SCALE: 1 : 500  
ALL DISTANCES ARE IN METRES.

THIS PLAN SHOWS GROUND-LEVEL MEASURED DISTANCES.  
PRIOR TO COMPUTATION OF U.T.M. COORDINATES, MULTIPLY  
BY COMBINED FACTOR 0.9995122.

GRID BEARINGS ARE DERIVED FROM OBSERVATIONS  
BETWEEN CONTROL MONUMENTS 88H1738, AND 88H1848,  
INTEGRATED SURVEY AREA NUMBER 39, PRINCE GEORGE.



BOOK OF REFERENCE	
DESCRIPTION	AREA REQUIRED
REM. LOT A, PLAN 24370, DISTRICT LOT 1574	347 m <sup>2</sup>
REM. LOT B, PLAN 32852, DISTRICT LOT 1574	156 m <sup>2</sup>

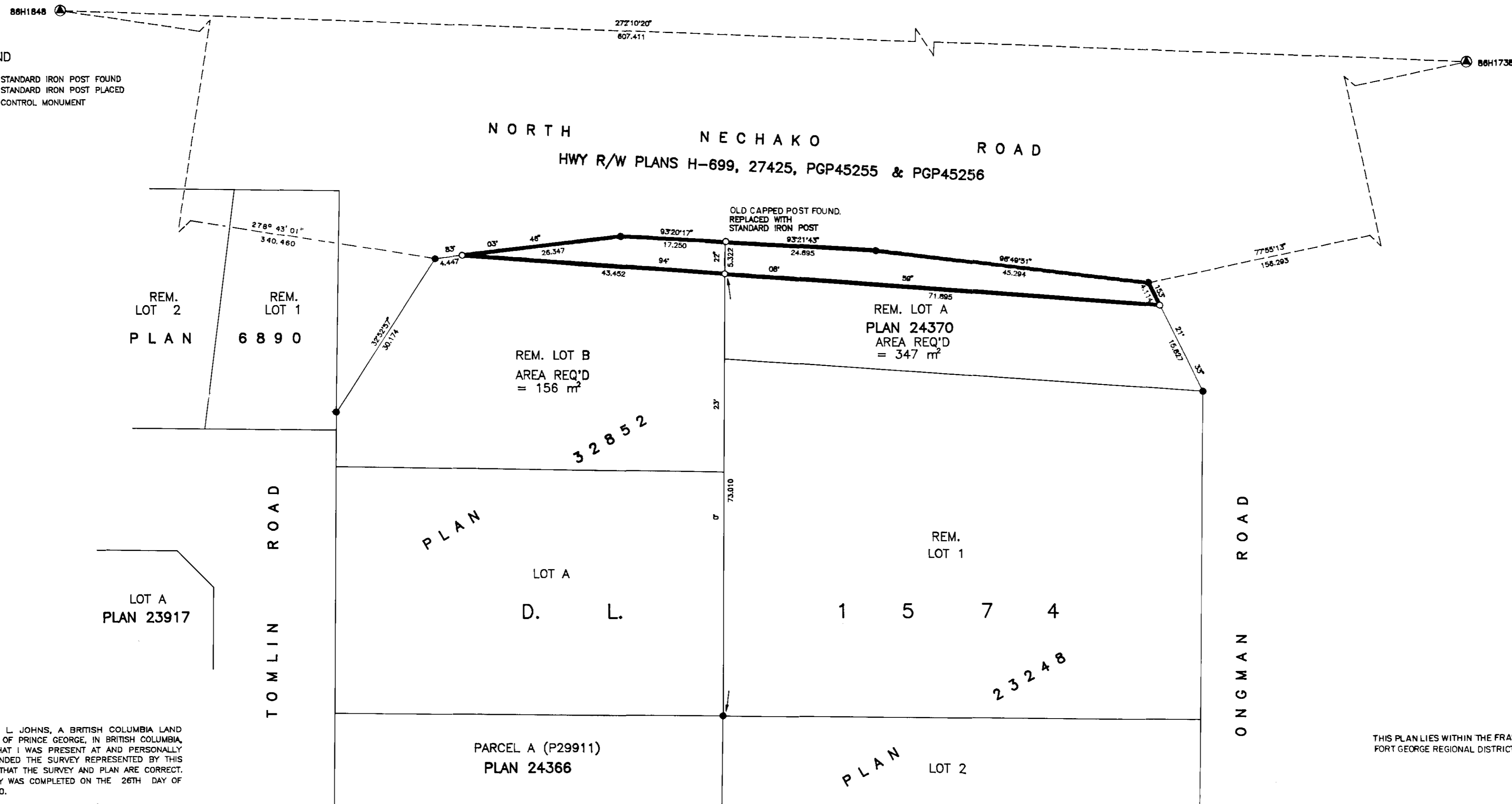
PLAN No. PGP 45826

DEPOSITED IN THE LAND TITLE OFFICE  
AT PRINCE GEORGE, B.C., THIS 29  
DAY OF Aug., 2000.

*Linda J. Kilbride/ag*  
REGISTRAR  
PP 30591

LEGEND

- STANDARD IRON POST FOUND
- STANDARD IRON POST PLACED
- ⊙ CONTROL MONUMENT



I, RONALD L. JOHNS, A BRITISH COLUMBIA LAND SURVEYOR, OF PRINCE GEORGE, IN BRITISH COLUMBIA, CERTIFY THAT I WAS PRESENT AT AND PERSONALLY SUPERINTENDED THE SURVEY REPRESENTED BY THIS PLAN AND THAT THE SURVEY AND PLAN ARE CORRECT. THE SURVEY WAS COMPLETED ON THE 26TH DAY OF JUNE, 2000.

*R.L. Johns*  
RL JOHNS, B.C.L.S., C.L.S.

THIS PLAN LIES WITHIN THE FRASER-FORT GEORGE REGIONAL DISTRICT.

R. L. JOHNS LAND SURVEYING LTD.  
LEGAL AND ENGINEERING SURVEYS  
240 VICTORIA STREET  
PRINCE GEORGE, B. C. V2L 2J4  
PHONE: (250)562-5759  
FAX: (250)562-5703  
2000066 BB3 - 7-6