

EXPLANATORY PLAN OF RIGHTS OF WAY THROUGH  
 LOTS 6, 25, 30 & 31, PLAN PGP\_45787\_  
 CARIBOO DISTRICT  
 B.C.G.S. 93G.086 & 93G.087



SCALE: 1 : 1000  
 ALL DISTANCES SHOWN ARE IN METRES.

BEARINGS ARE ASTRONOMIC, DERIVED  
 FROM PLAN PGP\_45787\_  
 PURSUANT TO SECTION 113 OF THE LAND TITLE ACT.

ALL IN PLAN PGP_	DESCRIPTION	DISTRICT	LOT	AREA REQUIRED
LOT 25			104 m <sup>2</sup>	
LOT 30			136 m <sup>2</sup>	
LOT 31			145 m <sup>2</sup>	
LOT 6			199 m <sup>2</sup>	

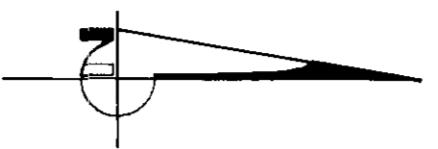
(P29521)

PLAN No. PGP 45788

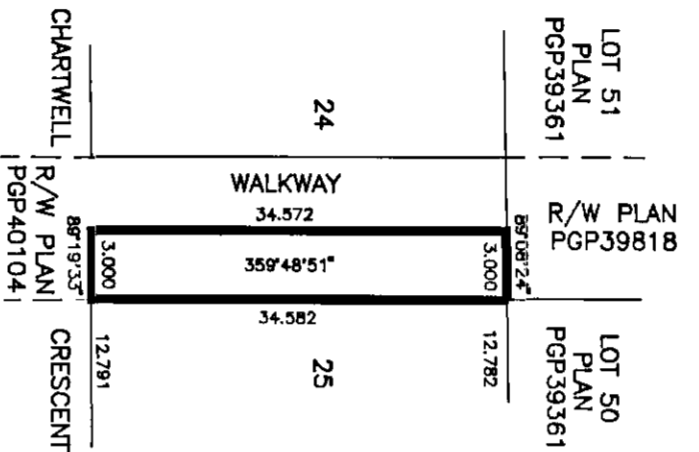
DEPOSITED IN THE LAND TITLE OFFICE  
 AT PRINCE GEORGE, B.C. THIS 21<sup>ST</sup>  
 DAY OF AUGUST, 2000.

REGISTERAR  
 LINDA KIBRIE

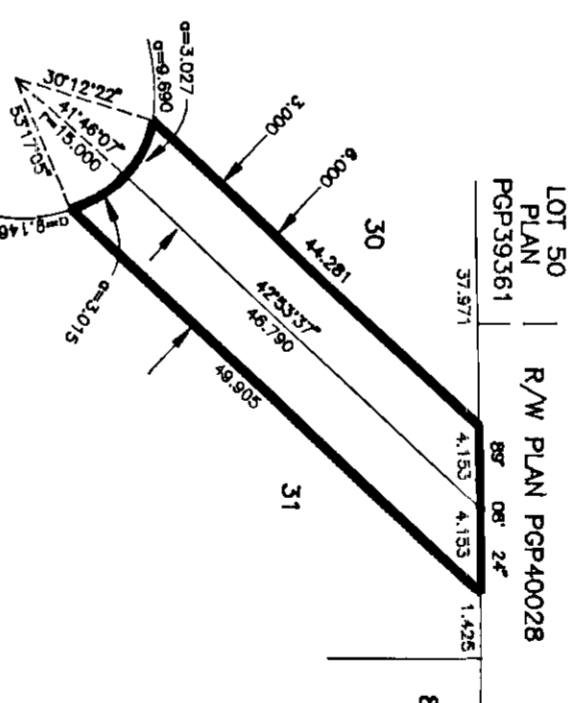
*Pr*



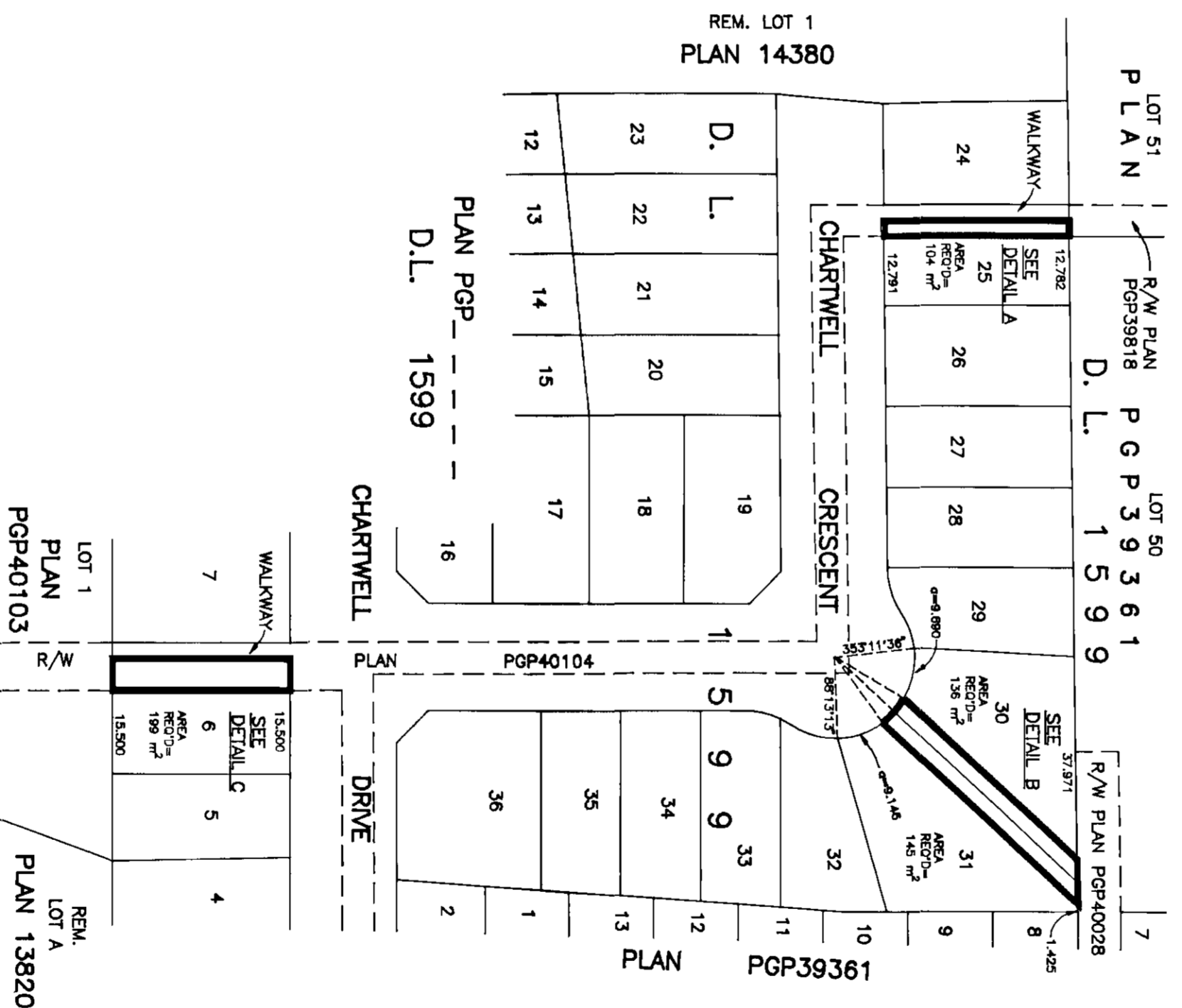
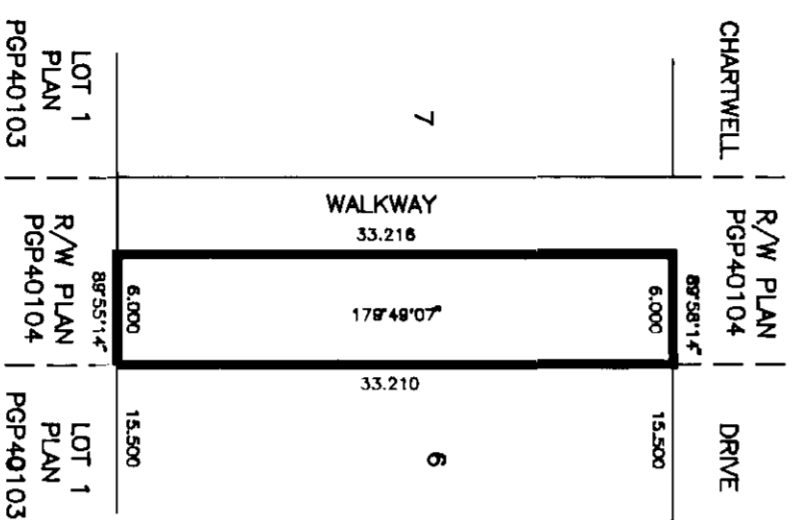
DETAIL A  
 NO SCALE



DETAIL B  
 NO SCALE



DETAIL C  
 NO SCALE



CERTIFIED CORRECT  
 ACCORDING TO LAND TITLE OFFICE RECORDS  
 THIS 14TH DAY OF JULY, 2000.

*[Signature]*  
 R. L. JOHNS, B.C.L.S., C.L.S.

THIS PLAN LIES WITHIN THE FRASER-  
 FORT GEORGE RECORDAL DISTRICT.

R. L. JOHNS LAND SURVEYING LTD.  
 LEAD AND ENGINEERING SURVEYS  
 PRINCE GEORGE, B.C. T7N 1Z1 2J4  
 PHONE: (250)562-5759  
 FAX: (250)562-5703  
 20000008A CCB - 4-12