

PLAN OF STATUTORY RIGHT OF WAY THROUGH
 LOT 1, PLAN 18402,
 DISTRICT LOT 2062
 CARIBOO DISTRICT

B.C.G.S. 936:097

PURSUANT TO SECTION 113 OF THE LAND TITLE ACT.

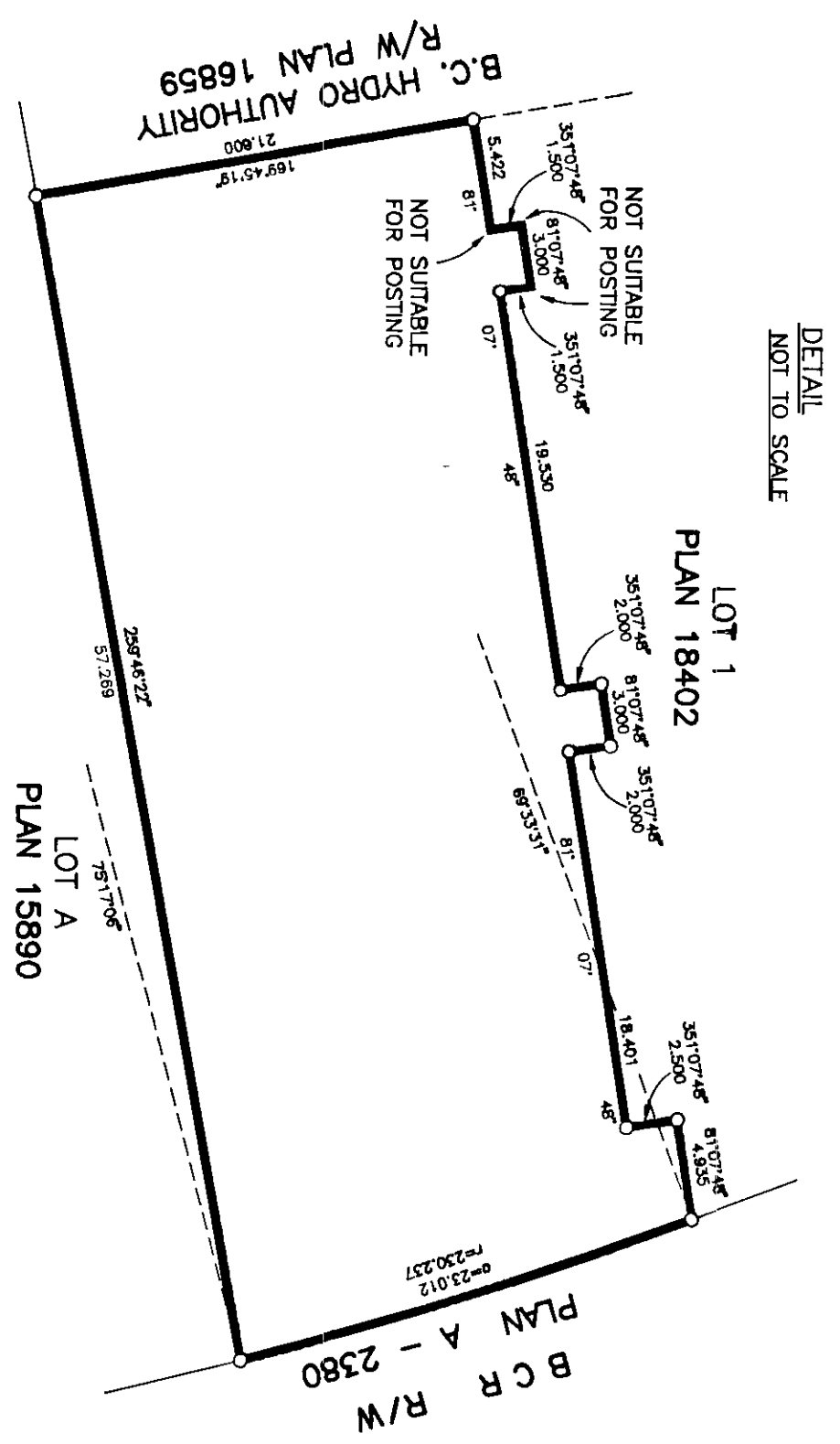
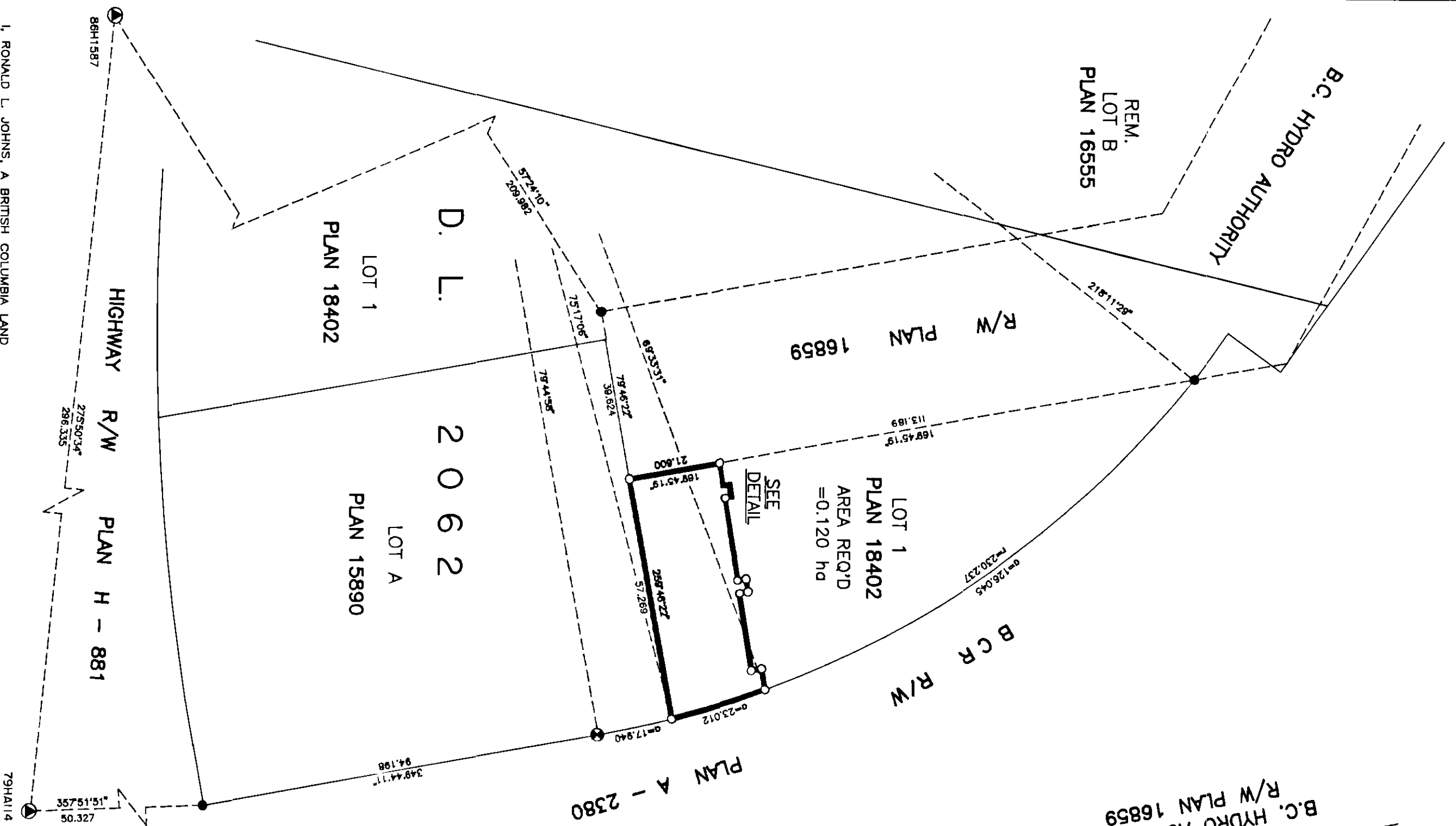
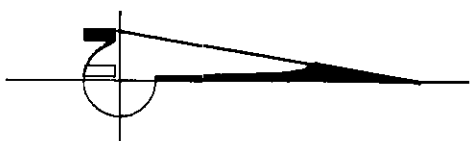
SCALE : 1 = 1000
 ALL DISTANCES ARE IN METERS.

THIS PLAN SHOWS GROUND-LEVEL MEASURED DISTANCES.
 PRIOR TO COMPUTATION OF U.T.M. COORDINATES, MULTIPLY
 BY COMBINED FACTOR 0.9995148.

GRID BEARINGS ARE DERIVED FROM OBSERVATIONS
 BETWEEN CONTROL MONUMENTS 79HA114, AND 86H1587,
 INTEGRATED SURVEY AREA NUMBER 39, PRINCE GEORGE.

LEGEND

- STANDARD IRON POST FOUND
- STANDARD IRON POST PLACED
- ⊙ STANDARD CAPPED POST
- ⊕ CONTROL MONUMENT



DETAIL
 NOT TO SCALE

PLAN No. PGP 456008
 DEPOSITED IN THE LAND TITLE OFFICE
 AT PRINCE GEORGE, B.C., THIS 14th DAY OF SENE 2000

Ronald Hillside Inc
 REGISTRAR

I, RONALD L. JOHNS, A BRITISH COLUMBIA LAND SURVEYOR, OF PRINCE GEORGE, IN BRITISH COLUMBIA, CERTIFY THAT I WAS PRESENT AT AND PERSONALLY SUPERINTENDED THE SURVEY REPRESENTED BY THIS PLAN AND THAT THE SURVEY AND PLAN ARE CORRECT. THE SURVEY WAS COMPLETED ON THE 31ST DAY OF MARCH, 2000.

R.L. Johns
 R.L. JOHNS, B.C.L.S., C.L.S.

THIS PLAN LIES WITHIN THE FRASER-FORT GEORGE REGIONAL DISTRICT.

R. L. JOHNS LAND SURVEYING LTD.
 LAND AND ENGINEERING SURVEYORS
 PRINCE GEORGE, B. C. V2L 2L4
 PHONE: (250)562-5759
 FAX: (250)562-5703
 2000021 CC6 - 5

3A-88-824

B.C. Land Title Office 205-1420/133

005 07 0916 LTD 00996 4