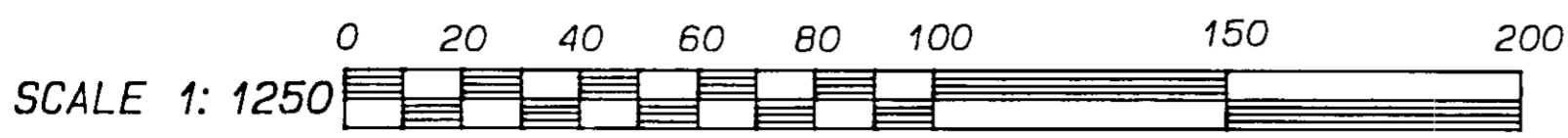


REFERENCE PLAN OF EASEMENT OF PART OF REM. PARCEL 1, PLAN 34384, AND PART OF REM. PARCEL 1, PLAN 34384 AS SHOWN ON PLAN PGP 35183, D.L.S 745 AND 747, CARIBOO DISTRICT BCGS 936.087

PLAN PGP 45517

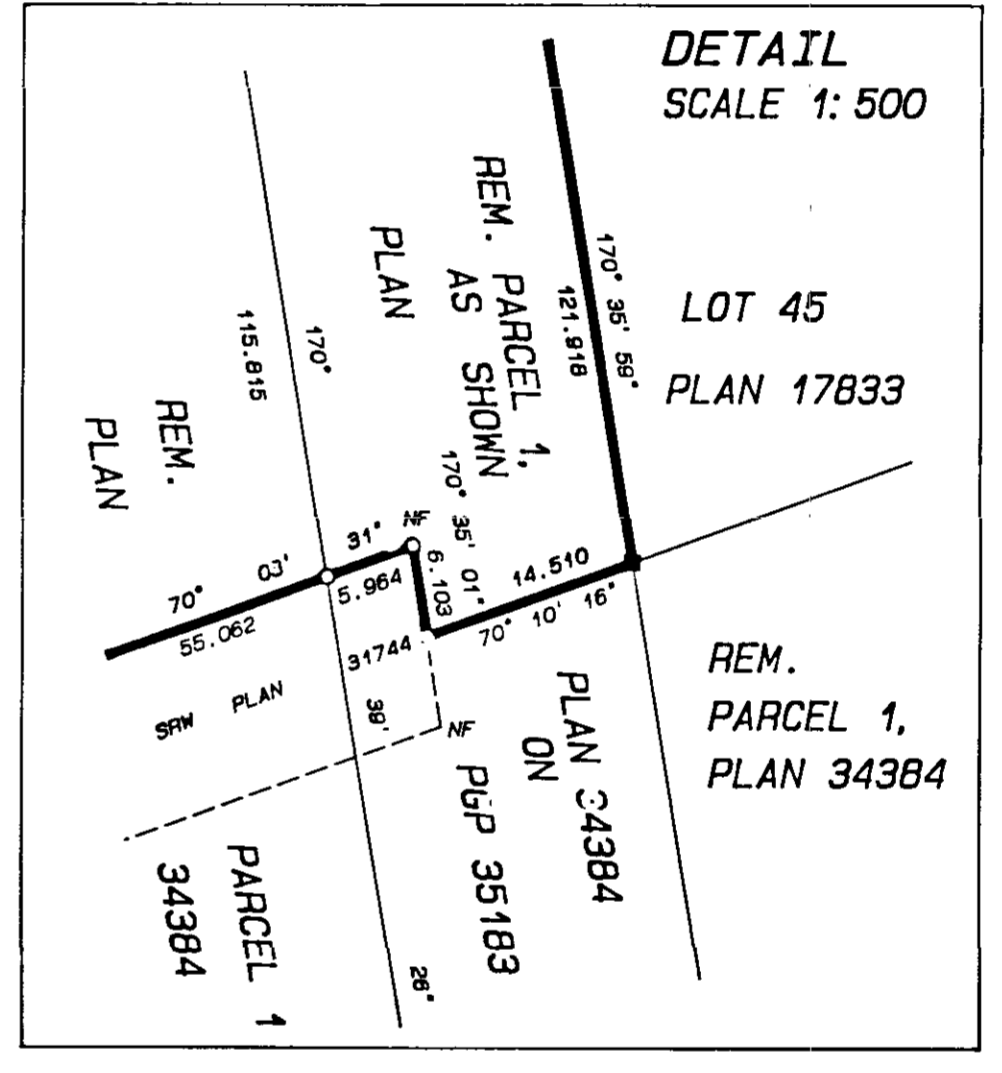
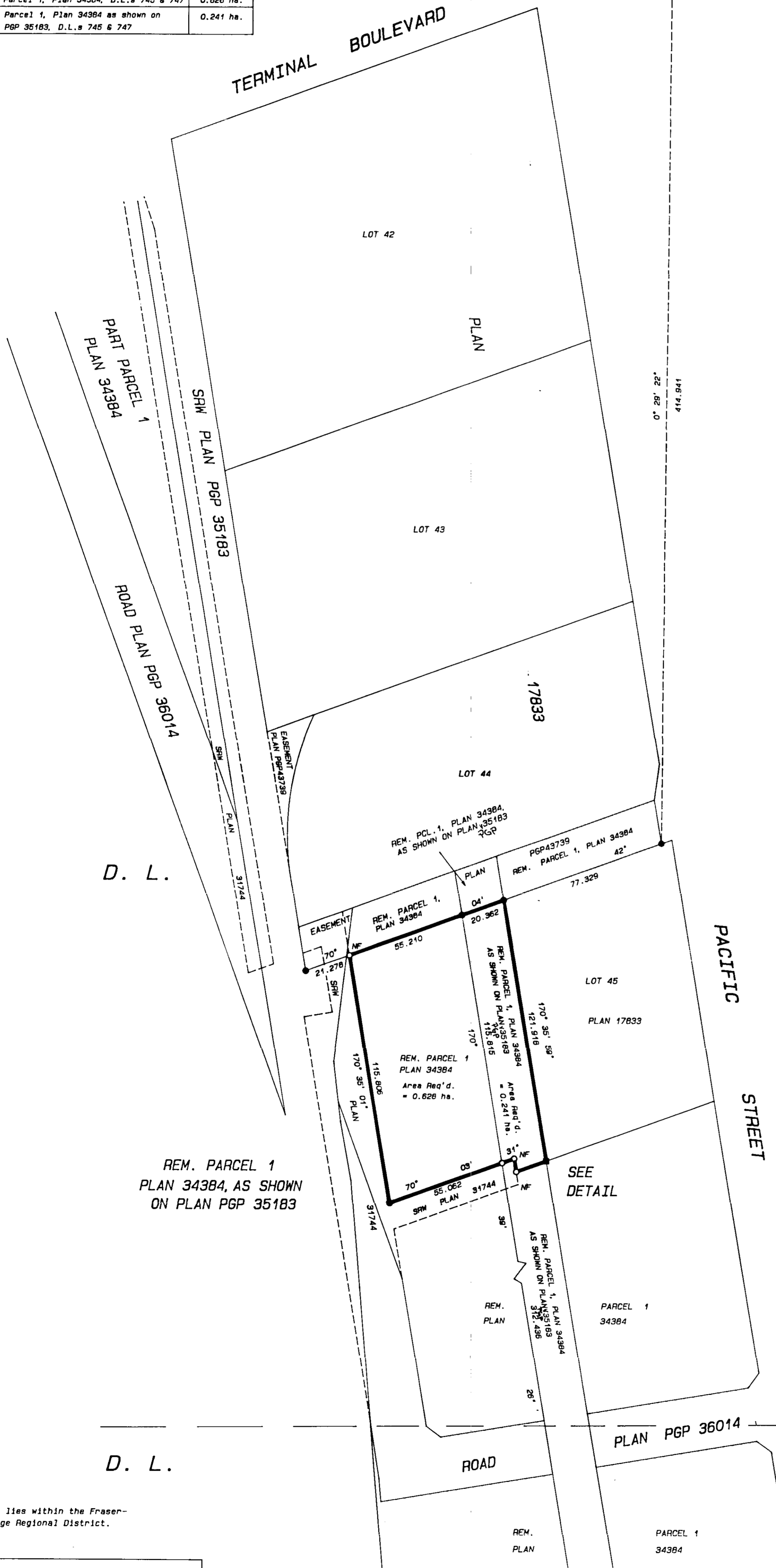
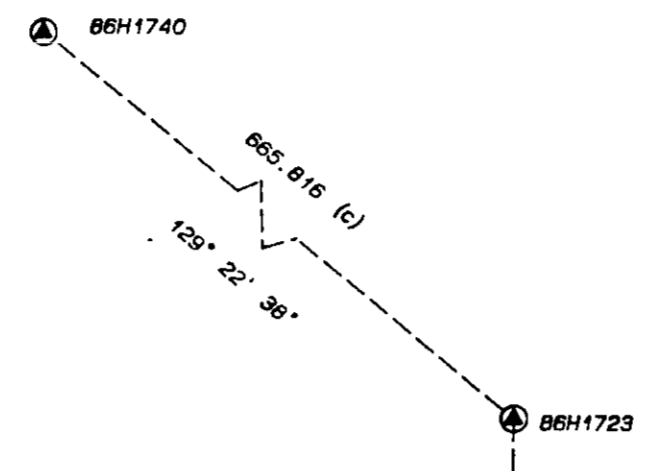
Deposited in the Land Title Office at Prince George B.C. this 17 day of MAY 2000. *Linda Hillside* Registrar pp 16485



**LEGEND** Grid bearings are derived from observations between control monuments 86H1722 and 86H1740, Integrated Survey Area Number 39, City of Prince George, NAD83 (CSRS)  
This plan shows ground-level measured distances. Prior to computation of U.T.M. coordinates multiply by combined factor 0.9995125

- Standard Iron Post Found
  - Standard Iron Post Set
  - Lead Plug Found
  - ⊙ Integrated Survey Area Control Monument
- All distances are in metres.

BOOK OF REFERENCE	
DESCRIPTION	AREA
Rem. Parcel 1, Plan 34384, D.L.s 745 & 747	0.628 ha.
Rem. Parcel 1, Plan 34384 as shown on Plan PGP 35183, D.L.s 745 & 747	0.241 ha.



7 4 5

7 4 7

This plan lies within the Fraser-Fort George Regional District.

I, Richard E. Gook, a British Columbia land surveyor, of the city of Prince George, in British Columbia, certify that I was present at and personally superintended the survey represented by this plan, and that the survey and plan are correct. The survey was completed on the 22nd day of February, 2000.

*[Signature]*

B.C.L.S.

**R.E. GOOK & ASSOCIATES**  
B.C. & CANADA LANDS SURVEYORS  
881 FRONT STREET \* 886 VANCOUVER STREET  
QUESNEL, B.C. V2J 2K9 PRINCE GEORGE, B.C. V2L 2P6  
PHONE: 992-2424 PHONE: 664-4242  
FAX: 992-3434 FAX: 664-5343  
FILE: 00-0974P6