

PLAN OF STATUTORY RIGHT-OF-WAY THROUGH  
PART OF W. 1/2 OF S.E. 1/4 AND  
PART OF S. W. 1/4 AS SHOWN ON PLAN 18310,  
DISTRICT LOT 4048  
CARIBOO DISTRICT

B.C.G.S 93G.096

PURSUANT TO SECTION 113 OF THE LAND TITLE ACT.



SCALE = 1 : 500  
ALL DISTANCES ARE SHOWN IN METRES.

THIS PLAN SHOWS GROUND-LEVEL MEASURED DISTANCES.  
PRIOR TO COMPUTATION OF U.T.M. COORDINATES, MULTIPLY  
BY COMBINED FACTOR 0.9994794

GRID BEARINGS ARE DERIVED FROM OBSERVATIONS  
BETWEEN CONTROL MONUMENTS 86H1616, AND 86H1572,  
INTEGRATED SURVEY AREA NUMBER 39, PRINCE GEORGE.

LEGEND

- STANDARD IRON POST FOUND
- STANDARD IRON POST PLACED
- ⊙ CONTROL MONUMENT
- ⊕ STANDARD CAPPED POST FOUND



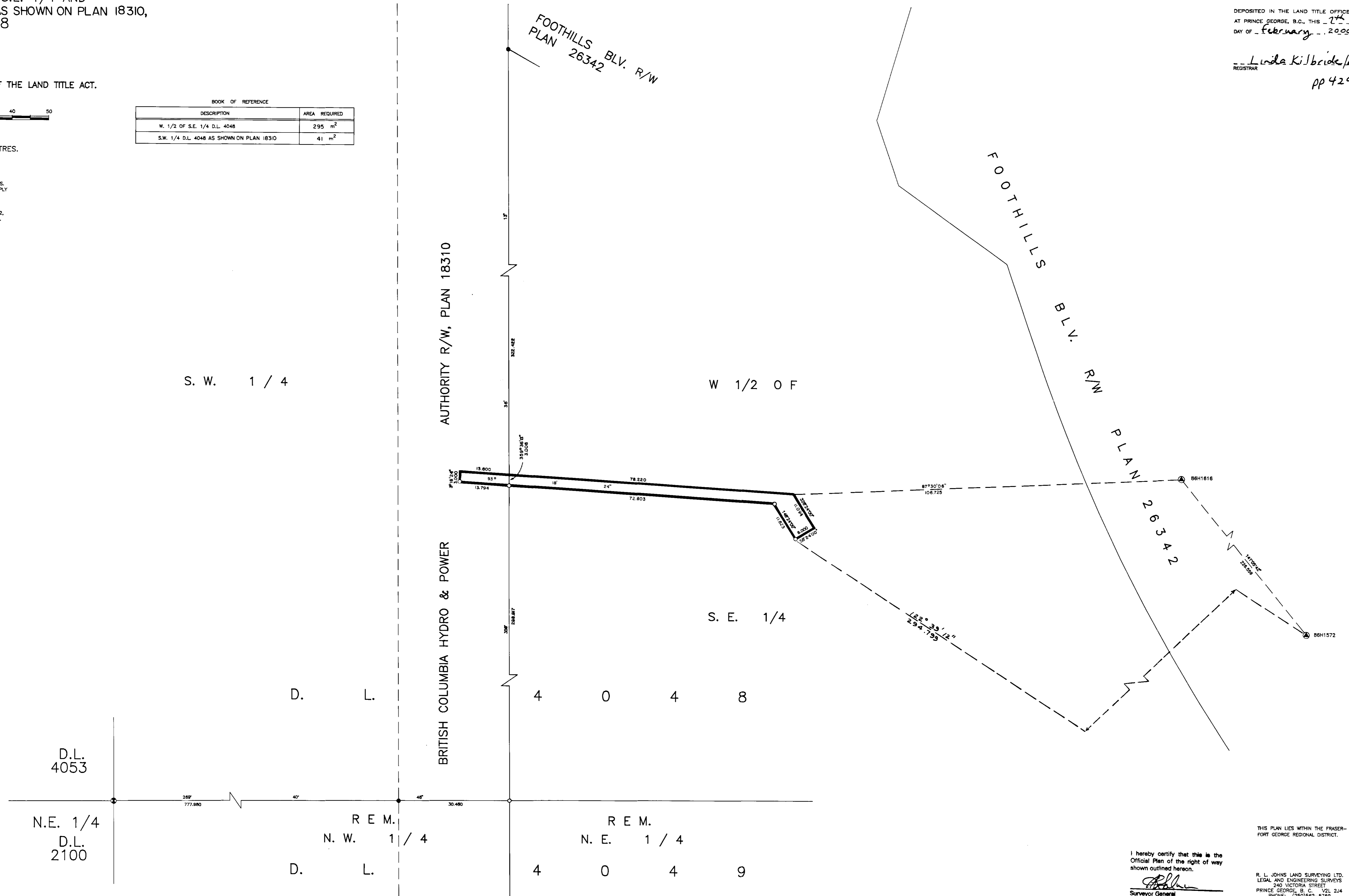
BOOK OF REFERENCE	
DESCRIPTION	AREA REQUIRED
W. 1/2 OF S.E. 1/4 D.L. 4048	295 m <sup>2</sup>
S.W. 1/4 D.L. 4048 AS SHOWN ON PLAN 18310	41 m <sup>2</sup>

PLAN No. PGP 45096

DEPOSITED IN THE LAND TITLE OFFICE  
AT PRINCE GEORGE, B.C., THIS 22<sup>ND</sup>  
DAY OF February, 2000

Linda Kilbride/DA  
REGISTRAR

pp 4294



I, RONALD L. JOHNS, A BRITISH COLUMBIA LAND  
SURVEYOR, OF PRINCE GEORGE, IN BRITISH COLUMBIA,  
CERTIFY THAT I WAS PRESENT AT AND PERSONALLY  
SUPERINTENDED THE SURVEY REPRESENTED BY THIS  
PLAN AND THAT THE SURVEY AND PLAN ARE CORRECT.  
THE SURVEY WAS COMPLETED ON THE 22ND DAY OF  
JULY, 1999.

*R.L. Johns*  
R.L. JOHNS, B.C.L.S., C.L.S.

I hereby certify that this is the  
Official Plan of the right of way  
shown outlined hereon.  
*R.L. Johns*  
Surveyor General  
Victoria, B.C. FEBRUARY 1, 2000.

THIS PLAN LIES WITHIN THE FRASER-  
FORT GEORGE REGIONAL DISTRICT.

R. L. JOHNS LAND SURVEYING LTD.  
LEGAL AND ENGINEERING SURVEYS  
240 VICTORIA STREET  
PRINCE GEORGE, B.C. V2L 2J4  
PHONE: (250)562-5759  
FAX: (250)562-5703