

REFERENCE PLAN OF EASEMENT THROUGH REM. LOT 2, PLAN 26464 DISTRICT LOT 1432

CARIBOO DISTRICT

B.C.G.S. 93G.087

PURSUANT TO SECTION 99 OF THE LAND TITLE ACT.



SCALE: 1 : 1000

ALL DISTANCES SHOWN ARE IN METERS.

THIS PLAN SHOWS GROUND-LEVEL MEASURED DISTANCES,
PRIOR TO COMPUTATION OF U.T.M. COORDINATES, MULTIPLY
BY COMBINED FACTOR 0.9995119.

GRID BEARINGS ARE DERIVED FROM OBSERVATIONS
BETWEEN CONTROL MONUMENTS 86H1753, AND 86H1830,
INTEGRATED SURVEY AREA NUMBER 39, PRINCE GEORGE.

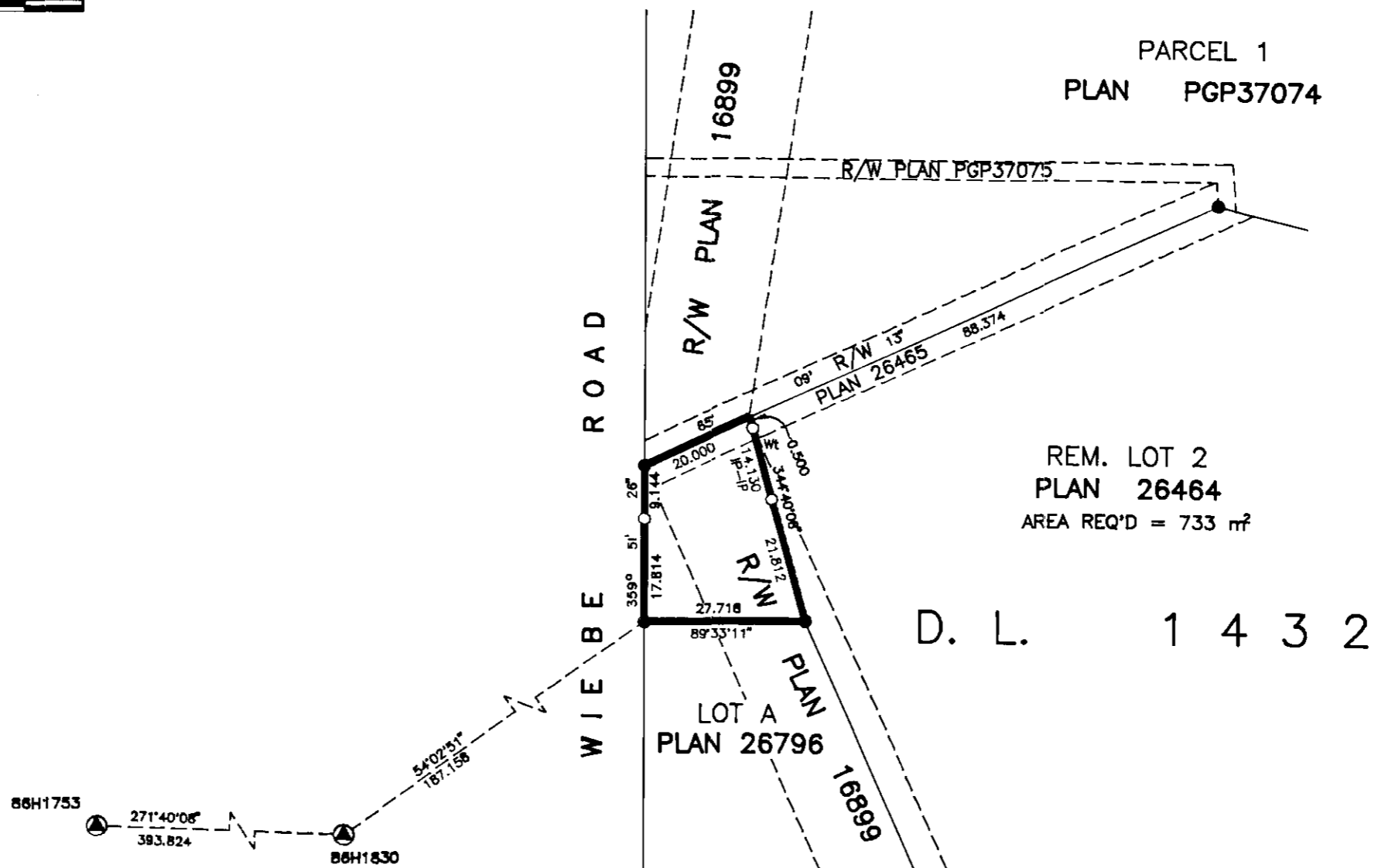
LEGEND

- STANDARD IRON POST FOUND
- STANDARD IRON POST PLACED
- ⊙ CONTROL MONUMENT



I, RONALD L. JOHNS, A BRITISH COLUMBIA LAND SURVEYOR, OF PRINCE GEORGE, IN BRITISH COLUMBIA, CERTIFY THAT I WAS PRESENT AT AND PERSONALLY SUPERINTENDED THE SURVEY REPRESENTED BY THIS PLAN AND THAT THE SURVEY AND PLAN ARE CORRECT. THE SURVEY WAS COMPLETED ON THE 26TH DAY OF OCTOBER, 1999.

R. L. Johns
R.L. JOHNS, B.C.L.S., C.L.S.



PARCEL 1
PLAN PGP37074

REM. LOT 2
PLAN 26464
AREA REQ'D = 733 m²

D. L. 1 4 3 2

PLAN No. PGP 45023 -

DEPOSITED IN THE LAND TITLE OFFICE
AT PRINCE GEORGE, B.C., THIS 11th
DAY OF Jan 2000

REGISTRAR *"R. Killbride"*
per AH

PP994

THIS PLAN LIES WITHIN THE FRASER-FORT GEORGE REGIONAL DISTRICT.

R. L. JOHNS LAND SURVEYING LTD.
LEGAL AND ENGINEERING SURVEYS
240 VICTORIA STREET
PRINCE GEORGE, B. C. V2L 2J4
PHONE: (250)562-5759
FAX: (250)562-5703