

PW 47680

PLAN PGP 44968

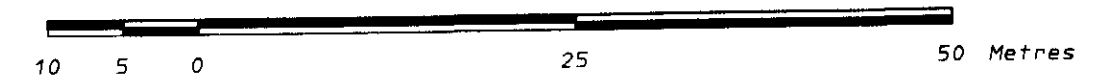
Deposited in the Land Title Office at Prince George, B.C.
this 17 day of DEC., 1999

LINDA KILBRIDE REGISTRAR
Pa:ou

**PLAN OF STATUTORY RIGHT-OF-WAY
OVER PART OF LOT 2, D. L. 's 71 AND 7046,
CARIBOO DISTRICT, PLAN PGP43632.**

B. C. G. S. 93B. 020

SCALE 1 : 500



LEGEND

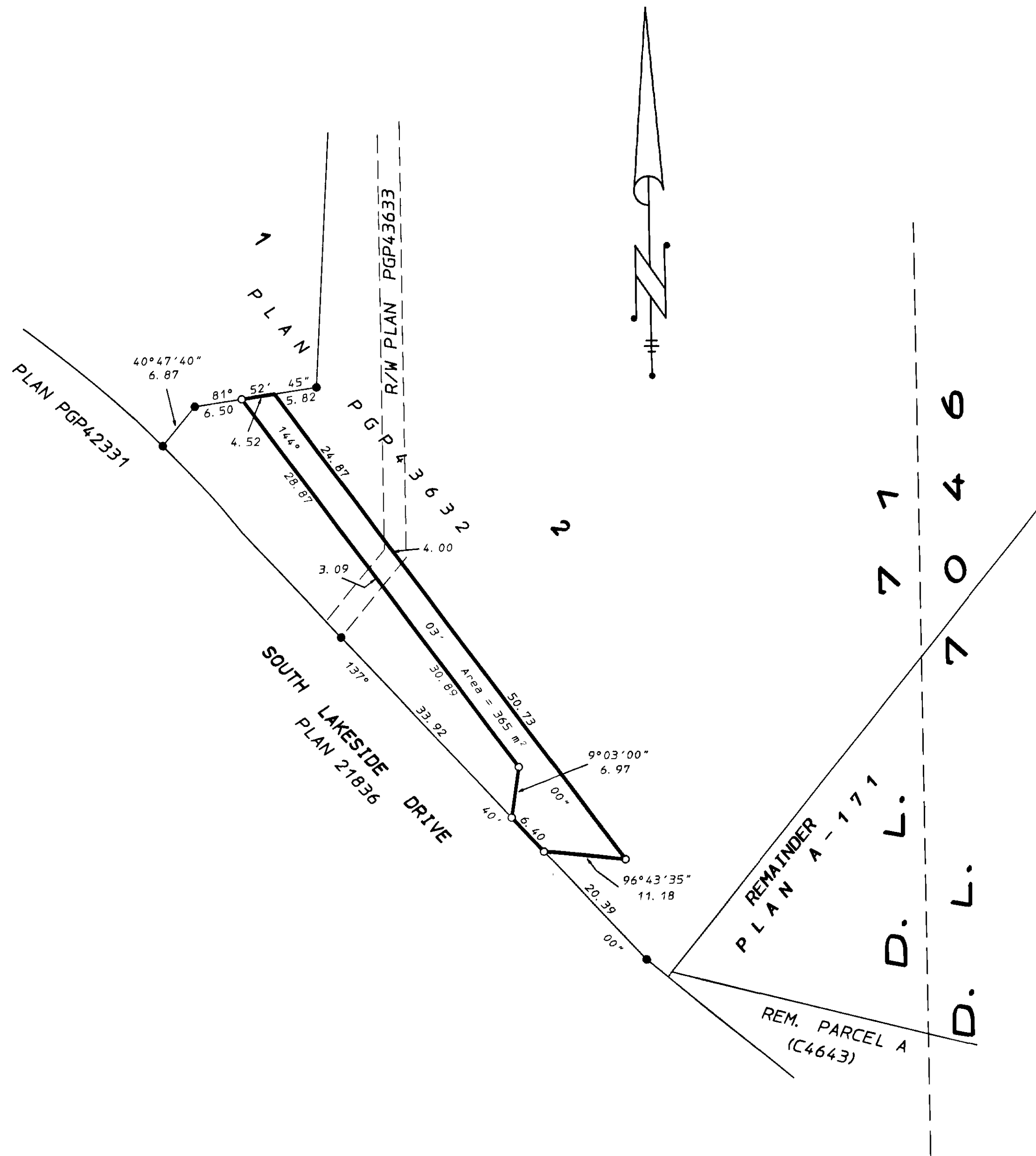
Bearings are astronomic derived from Plan PGP43632.
All distances are in metres and decimals thereof
unless otherwise indicated.
This plan lies within the CARIBOO REGIONAL DISTRICT.

- Standard Iron Post Found.
- Standard Iron Post Placed.

I, M.E. Exton, a British Columbia Land Surveyor
of Williams Lake, in British Columbia certify that
I was present at and personally superintended
the survey represented by this plan and that
the survey and plan are correct. The survey
was completed on the 15th day of April, 1999.

M.E. Exton B. C. L. S.

**EXTON, DODGE AND
GALIBOIS**
LAND SURVEYING INC.
133 BORLAND STREET
WILLIAMS LAKE, B. C.
V2G 1R1 392-7111
FILE No. 96-326-E



A2/5-33295