

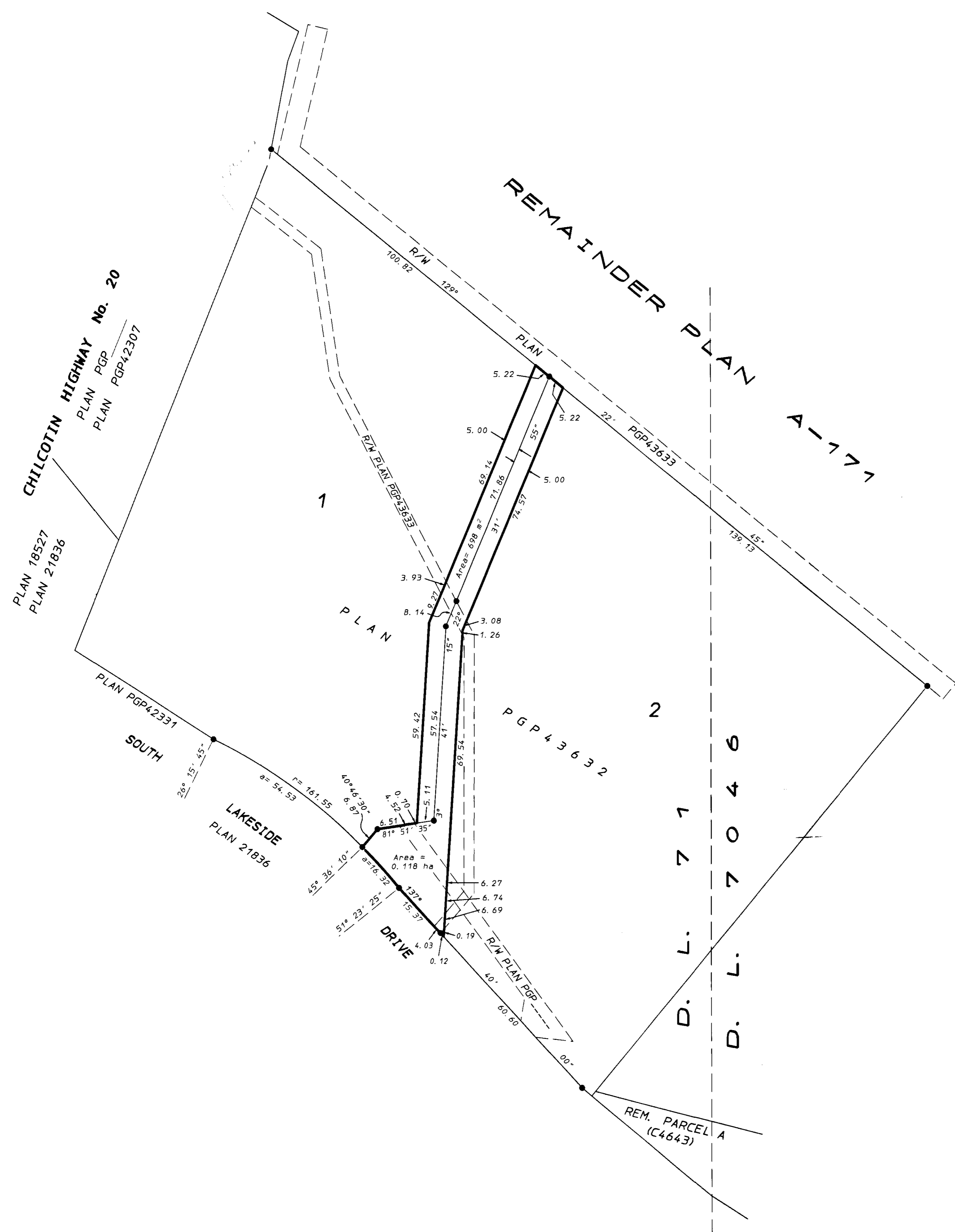
PN47670

PLAN PGP 44961

Deposited in the Land Title Office at Prince George, B.C.
this 17 day of DEC., 1999

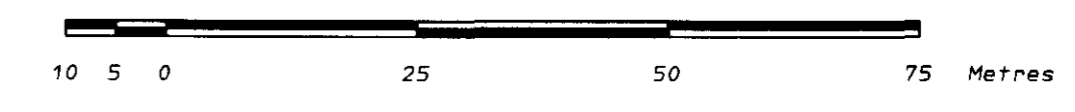
LINDA KILBRIDE REGISTRAR

Paise



REFERENCE PLAN OF EASEMENTS OVER
LOTS 1 AND 2, DISTRICT LOTS 71 AND 7046,
CARIBOO DISTRICT, PLAN PGP43632.

B. C. G. S. 93B.020
SCALE 1 : 750



LEGEND

Bearings are astronomic derived from Plan PGP43632.
All distances are in metres and decimals thereof
unless otherwise indicated.
This plan lies within the CARIBOO REGIONAL DISTRICT.

- Standard Iron Post Found.

BOOK OF REFERENCE	
DESCRIPTION	AREA REQUIRED
EASEMENT OVER LOT 1	698 m ²
EASEMENT OVER LOT 2	0.118 ha

I, M. E. Exton, a British Columbia Land Surveyor
of Williams Lake, in British Columbia certify that
I was present at and personally superintended
the survey represented by this plan and that
the survey and plan are correct. The survey
was completed on the 15th day of April, 1999.

M. E. Exton B. C. L. S.

EXTON, DODGE AND GALIBOIS
LAND SURVEYING INC.
133 BORLAND STREET
WILLIAMS LAKE, B. C.
V2G 1R1 392-7111
FILE No. 96-326-F