

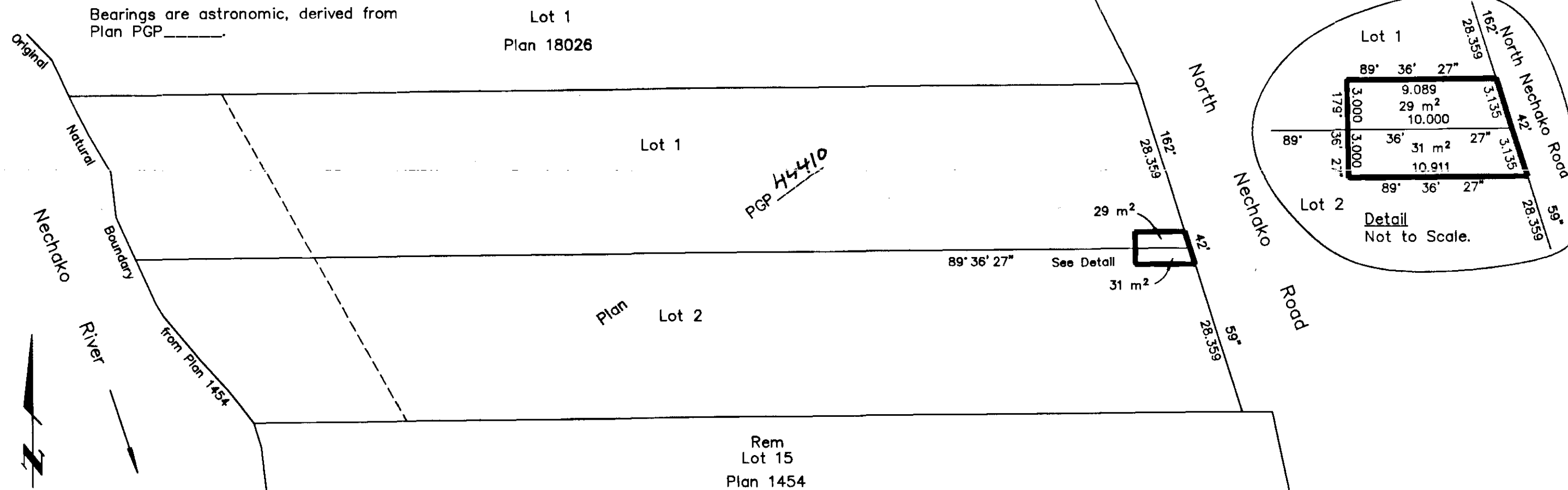
EXPLANATORY PLAN OF EASEMENT  
 WITHIN LOTS 1 AND 2,  
 PLAN PGP 44410, DISTRICT LOT 3050,  
 CARIBOO DISTRICT.

Pursuant to Section 99 of the  
 Land Title Act.  
 B.C.G.S. 93G.097

Scale: 1 : 750 (Distances are in metres)



Bearings are astronomic, derived from  
 Plan PGP \_\_\_\_\_

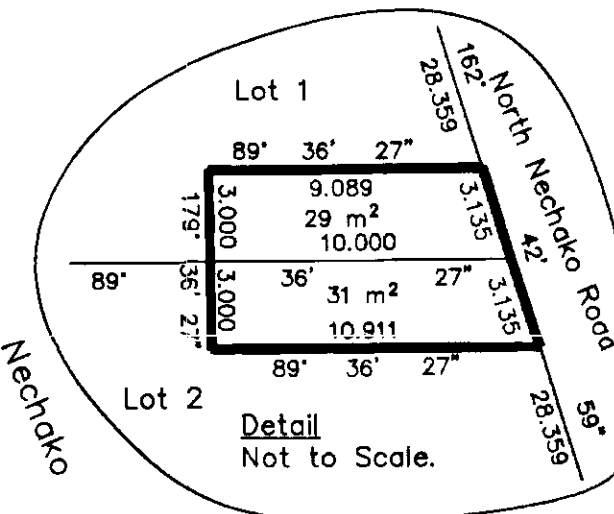


PW 25155-  
 024-552-020  
 024-552-054

PLAN NO. PGP 44411

Deposited in the Land Title Office at Prince  
 George this 08 day of JULY 1998

LINDA KILBRIDE  
 REGISTRAR  
*Rice*



Certified Correct, according to  
 Land Title Office Records.  
 This 9th day of November, 1998.

Gordon Kilbride  
 Gordon Kilbride, B.C.L.S.

BOOK OF REFERENCE	
DESCRIPTION	AREA
Lot 1, Plan PGP _____	29 m <sup>2</sup>
Lot 2, Plan PGP _____	31 m <sup>2</sup>

This plan lies within the Fraser-Fort  
 George Regional District.

**KILBRIDE LAND SURVEYING LTD.**  
 British Columbia Land Surveyors  
 Prince George, B.C.  
 Ph: (250) 562-1196 Fax: 562-3656

F.B.- RA	D.L.- 3050	File No. - 980250E
----------	------------	--------------------