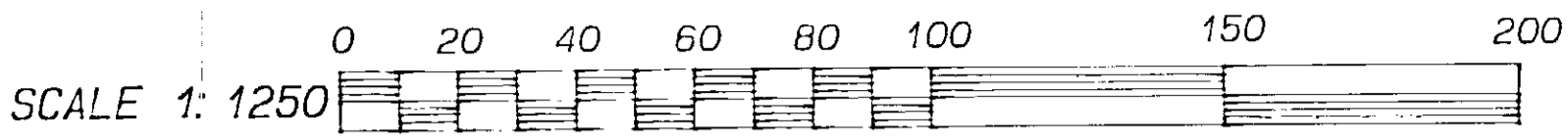


REFERENCE PLAN OF EASEMENT OVER
 REM. PARCEL 1, PLAN 34384,
 REM. PART OF PARCEL 1, PLAN 34384
 AS SHOWN ON PLAN PGP 35183,
 D.L.S 745 AND 747,
 CARIBOO DISTRICT B.C.G.S. 936.087

PLAN PGP43739

Deposited in the Land Title Office
 at Prince George B.C.
 this 3 day of March, 1999,
 "R. Killbuck"
 Registrar

PN 7480



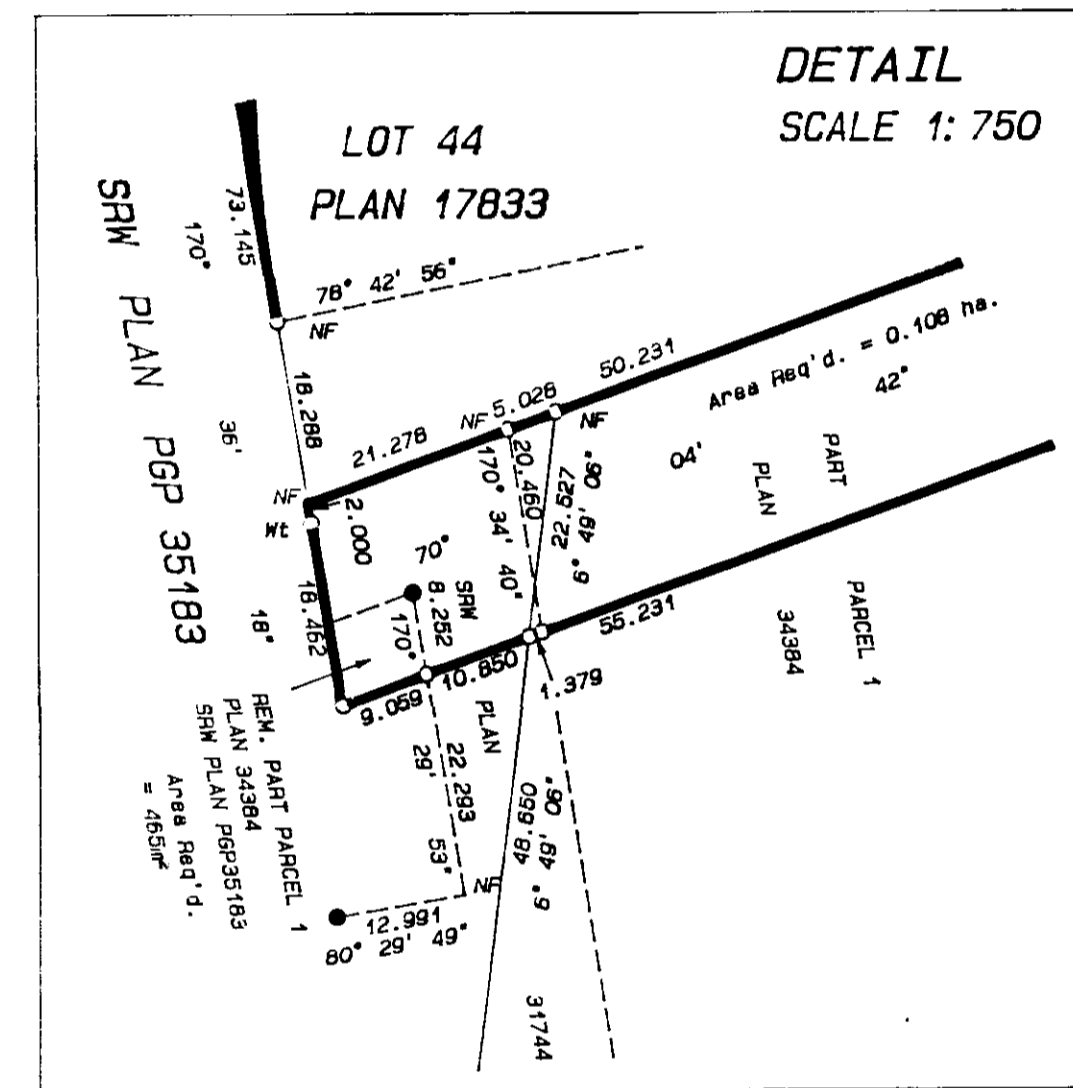
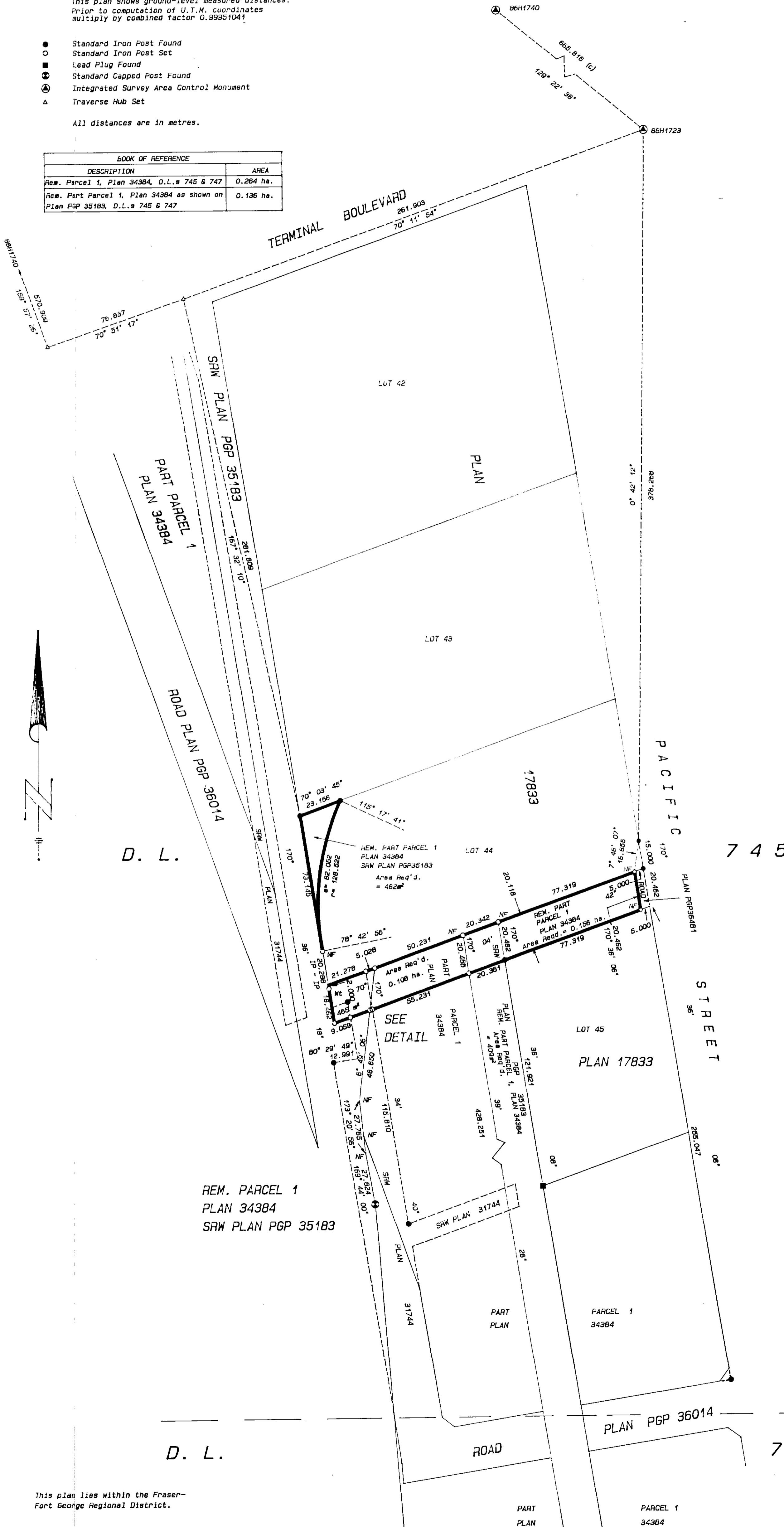
LEGEND Grid bearings are derived from observations between control monuments 66H1725 and 66H1740, Integrated Survey Area Number 39, City of Prince George

This plan shows ground-level measured distances. Prior to computation of U.T.M. coordinates multiply by combined factor 0.99951041

- Standard Iron Post Found
- Standard Iron Post Set
- Lead Plug Found
- Standard Capped Post Found
- ⊙ Integrated Survey Area Control Monument
- △ Traverse Hub Set

All distances are in metres.

BOOK OF REFERENCE	
DESCRIPTION	AREA
Rem. Parcel 1, Plan 34384, D.L.s 745 & 747	0.264 ha.
Rem. Part Parcel 1, Plan 34384 as shown on Plan PGP 35183, D.L.s 745 & 747	0.136 ha.



I, Richard E. Gook, a British Columbia land surveyor, of the city of Prince George, in British Columbia, certify that I was present at and personally supervised the survey represented by this plan, and that the survey and plan are correct. The survey was completed on the 25th day of February, 1998.

[Signature]

B.C.L.S.

R.E. GOOK & ASSOCIATES
 B.C. & CANADA LANDS SURVEYORS
 691 FRONT STREET * 886 VANCOUVER STREET
 QUESNEL, B.C. V2J 2K9 PRINCE GEORGE, B.C. V2L 2P5
 PHONE: 992-2424 PRINCE GEORGE: 564-4242
 FAX: 992-3434 PRINCE GEORGE: 564-5343

784