

REFERENCE PLAN OF ROAD EXCHANGE TO ACCOMPANY
 CITY OF PRINCE GEORGE BYLAW NO. 6972,
 CLOSING ROAD SHOWN ON PLAN 1329 (ADJACENT
 TO LOT A PLAN PGP41223) AND OPENING AS ROAD
 PART OF LOT A PLAN PGP41223 AND PART OF
 LOT 246, PLAN 1329, DISTRICT LOT 4377, CARIBOO DISTRICT.
 PREPARED PURSUANT TO SECTION 574 OF THE MUNICIPAL ACT.

PLAN NO. PGP 43442

Deposited in the Land Title Office at Prince
 George this 22 day of December 1998

Linda Kilbride
 REGISTRAR
 Pm 55240

B.C.G.S. 93G.097

Scale: 1 : 750 (Distances are in metres)

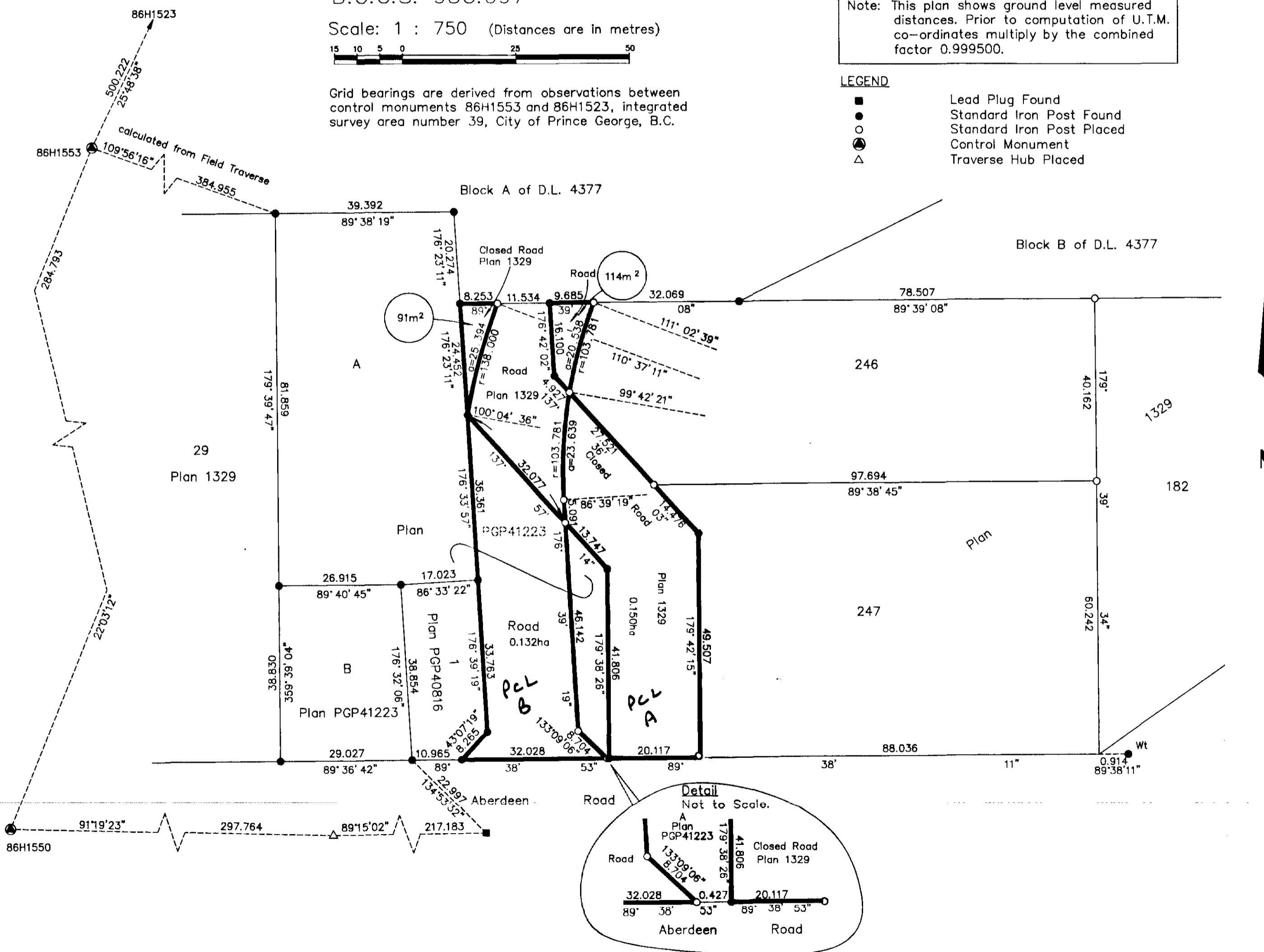


Grid bearings are derived from observations between
 control monuments 86H1553 and 86H1523, integrated
 survey area number 39, City of Prince George, B.C.

Note: This plan shows ground level measured
 distances. Prior to computation of U.T.M.
 co-ordinates multiply by the combined
 factor 0.999500.

LEGEND

- Lead Plug Found
- Standard Iron Post Found
- Standard Iron Post Placed
- △ Control Monument
- △ Traverse Hub Placed



Closed Road
 within Plan 1329 0.159ha = PCL A

Opened Road
 within Lot 246, Plan 1329 114m²
 within Lot A, Plan PGP41223 0.132ha = PCL B

I, Dale L. Keown, a British Columbia Land Surveyor of
 Prince George in British Columbia, certify that I was
 present at and personally superintended the survey
 represented by this plan and that the survey and plan
 are correct. The survey was completed on the 26th day
 of May, 1998.

Dale Keown
 Dale L. Keown, B.C.L.S.

This plan lies within the Fraser-Fort
 George Regional District.

KILBRIDE LAND SURVEYING LTD. British Columbia Land Surveyors Prince George, B.C. Ph: (250) 562-1196 Fax: 562-3656		
F.B.- RA	D.L.- 4377	FILE No.- 970345BL