

PLAN NO. PGP 43431

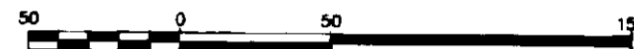
Deposited in the Land Title Office at Prince George this 21 day of DECEMBER 1998

*Gordon Kilbride* mk  
REGISTRAR PH 55133

PLAN OF STATUTORY RIGHT OF WAY OVER PART OF LOT 1, PLAN PGP43431, DISTRICT LOTS 749 & 750, CARIBOO DISTRICT. Pursuant to Section 113 of the Land Title Act.

B.C.G.S. 93G.087

Scale: 1 : 2500 (Distances are in metres)



Grid bearings are derived from observations between control monuments 86H1726 and 86H1758, integrated survey area number 39, City of Prince George, B.C.

Note: This plan shows ground level measured distances. Prior to computation of U.T.M. co-ordinates multiply by the combined factor 0.99951020

LEGEND

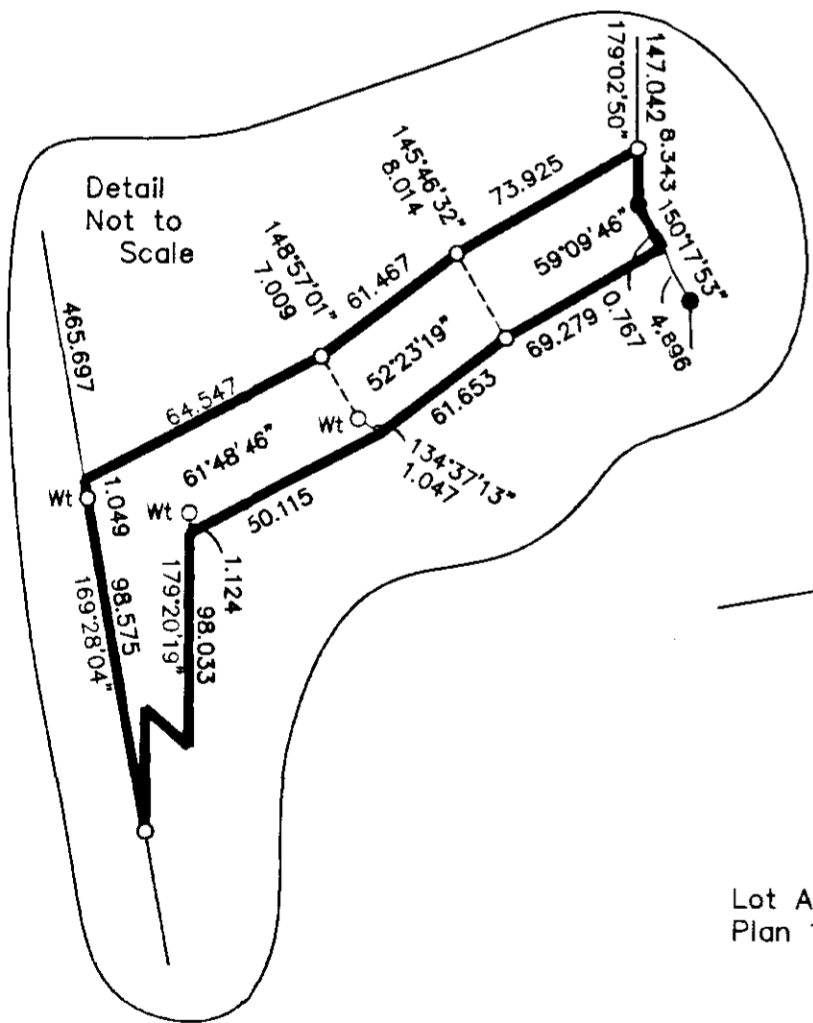
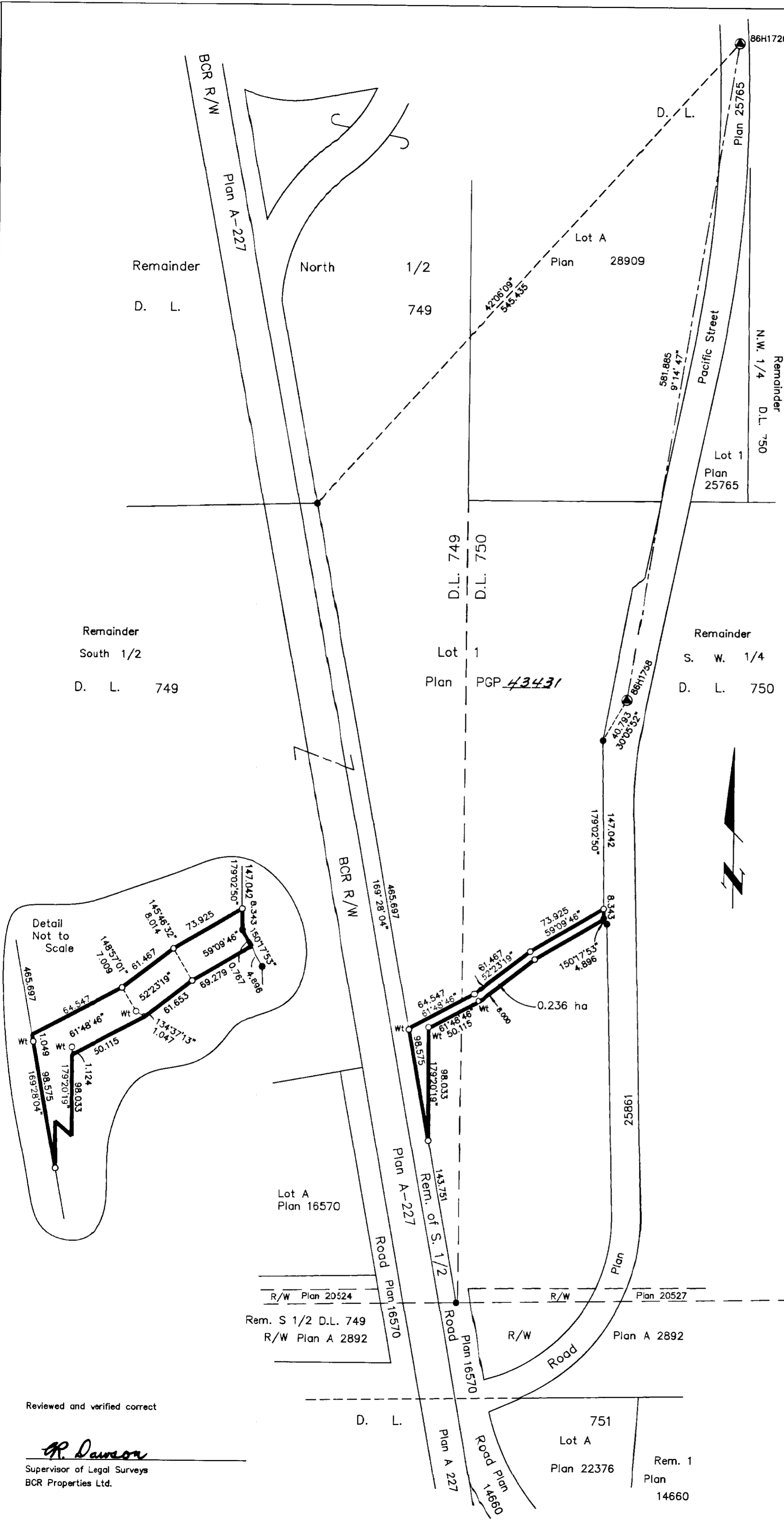
- Standard Iron Post Found
- Standard Iron Post Placed
- ⊙ Control Monument Found

I, Gordon Kilbride, a British Columbia Land Surveyor of Prince George in British Columbia, certify that I was present at and personally superintended the survey represented by this plan and that the survey and plan are correct. The survey was completed on the 30th day of November, 1998.

*Gordon Kilbride*  
Gordon Kilbride, B.C.L.S.

This plan lies within the Fraser-Fort George Regional District.

KILBRIDE LAND SURVEYING LTD. British Columbia Land Surveyors Prince George, B.C. Ph: (250) 562-1196 Fax: 562-3656		
F.B.- VZ34	D.L.- 750	FILE No. 970283RW



Reviewed and verified correct

*R. Dawson*  
Supervisor of Legal Surveys  
BCR Properties Ltd.