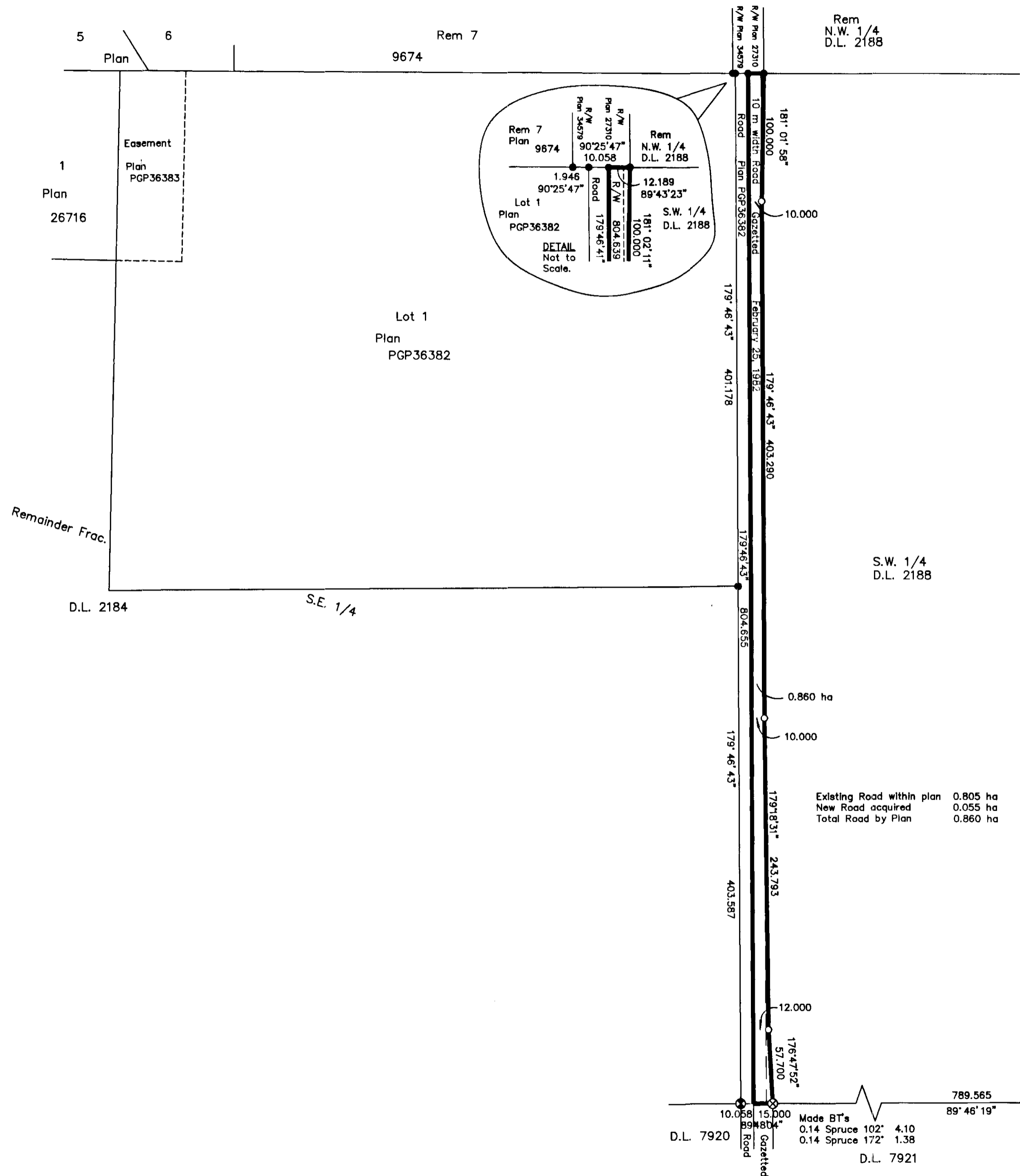


PLAN NO. PGP43332

Deposited in the Land Title Office at Prince George this 9th day of December 1998

Linda Kilbride OR
REGISTRAR PM 53613



PLAN OF STATUTORY
RIGHT OF WAY OVER THE
SOUTH WEST 1/4 OF DISTRICT
LOT 2188, CARIBOO DISTRICT.
Pursuant to Section 113 of the
Land Title Act.
B.C.G.S. 93G.098

Scale: 1 : 2500 (Distances are in metres)



Bearings are astronomic, derived from Plan PGP36382 = 179°46'43".

LEGEND

- ⊙ Standard Capped Post Found
- ⊗ Standard Capped Post Placed
- Standard Iron Post Found
- Standard Iron Post Placed

BT bearings are magnetic.

I, Gordon Kilbride, a British Columbia Land Surveyor of Prince George in British Columbia, certify that I was present at and personally superintended the survey represented by this plan and that the survey and plan are correct. The survey was completed on the 1st day of June, 1998.

Gordon Kilbride
Gordon Kilbride, B.C.L.S.
LTO Client No. 010909

Approved under the Land Title Act this day of
, 19 .

S.E. 1/4
D.L. 2188
Approving Officer
Ministry of Transportation and Highways

Existing Road within plan 0.805 ha
New Road acquired 0.055 ha
Total Road by Plan 0.860 ha

Land
Found PP in Stone Mound
Made BT's
0.33 Fir 62' 7.17
0.25 Fir 312' 9.66

This plan lies within the Fraser-Fort George Regional District.

KILBRIDE LAND SURVEYING LTD. British Columbia Land Surveyors Prince George, B.C. Ph: (250) 562-1196 Fax: 562-3656		
F.B.- RA	D.L.- 2188	File No. -980219A