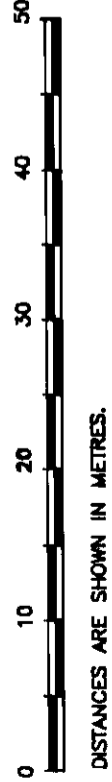


EASEMENT PLAN FOR ACCESS AND UTILITY PURPOSES OVER PART OF
 LOT 2, PLAN PGP42018, DISTRICT LOT 1599,
 CARIBOO DISTRICT.

PURSUANT TO SECTION 182 LAND TITLE ACT.

SCALE 1 : 500 B.C.G.S. 93G.086

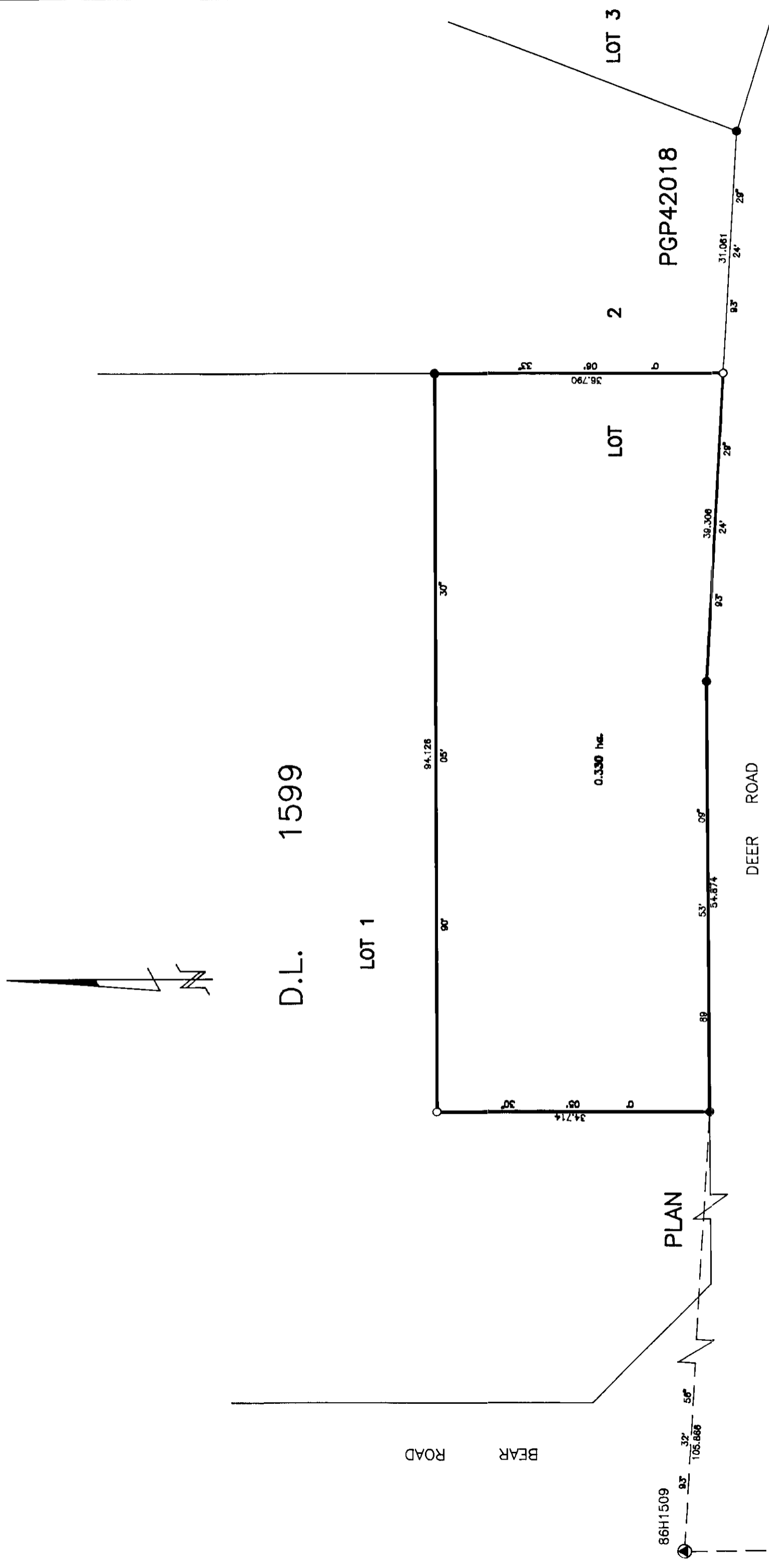


THIS PLAN SHOWS GROUND-LEVEL MEASURED DISTANCES.
 PRIOR TO COMPUTATION OF U.T.M. COORDINATES, MULTIPLY
 BY COMBINED FACTOR 0.9994827.

GRID BEARINGS ARE DERIVED FROM OBSERVATIONS
 BETWEEN CONTROL MONUMENTS 86H1485, AND 86H1509,
 INTEGRATED SURVEY AREA NUMBER 39, PRINCE GEORGE.

LEGEND

- STANDARD IRON POST FOUND
- STANDARD IRON POST PLACED
- ⊙ CONTROL MONUMENT



PLAN No. PGP 43272

DEPOSITED IN THE LAND TITLE OFFICE
 AT PRINCE GEORGE, B.C., THIS 25
 DAY OF Nov 19 98

Hinda J. Kilbride
 REGISTRAR

I, RONALD L. JOHNS, A BRITISH COLUMBIA LAND
 SURVEYOR, OF PRINCE GEORGE, IN BRITISH COLUMBIA,
 CERTIFY THAT I WAS PRESENT AT AND PERSONALLY
 SUPERINTENDED THE SURVEY REPRESENTED BY THIS
 PLAN AND THAT THE SURVEY AND PLAN ARE CORRECT.
 THE SURVEY WAS COMPLETED ON THE 3RD DAY OF
 NOVEMBER, 1998.

R. L. Johns
 R.L. JOHNS, B.C.L.S., C.L.S.

THIS PLAN LIES WITHIN THE FRASER-
 FORT GEORGE REGIONAL DISTRICT.

R. L. JOHNS LAND SURVEYING LTD.
 LEGAL AND ENGINEERING SURVEYS
 240 WILSON STREET
 PRINCE GEORGE, B. C.
 PHONE: (250)562-5759
 FAX: (250)562-5703