

EXPLANATORY PLAN OF EASEMENT THROUGH  
LOT 5, PLAN 22273  
DISTRICT LOT 3683  
CARIBOO DISTRICT

PLAN No. PGP 43271

DEPOSITED IN THE LAND TITLE OFFICE  
AT PRINCE GEORGE, B.C., THIS 25  
DAY OF Nov, 19 98.

B.C.G.S. 93G.096

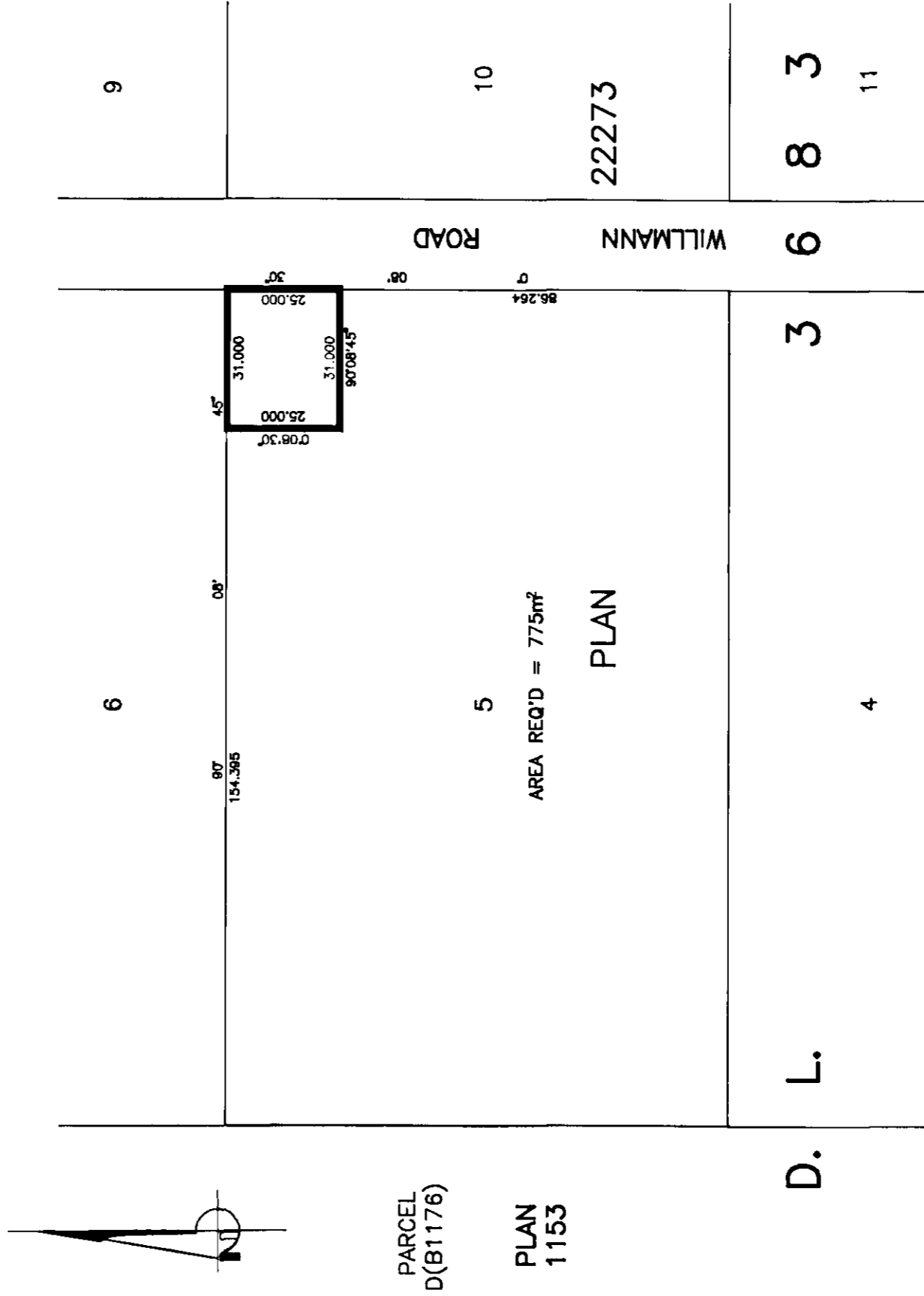
PURSUANT TO SECTION 182 OF THE LAND TITLE ACT.

*hinda J. Kilbride*  
REGISTRAR *Pm 5/14/39 / dg*



SCALE = 1 : 1250  
ALL DISTANCES ARE SHOWN IN METRES.

BEARINGS ARE ASTRONOMIC, DERIVED FROM PLAN 22273.



PARCEL  
D(B1176)

PLAN  
1153

AREA REQ'D = 775m²

PLAN

D. L.

3

6

8 3

4

11

22273

C E R T I F I E D   C O R R E C T  
ACCORDING TO LAND TITLE OFFICE RECORDS  
THIS 20TH DAY OF JULY, 1998.

R. L. JOHNS, B.C.L.S., C.L.S.

THIS PLAN LIES WITHIN THE FRASER-  
FORT GEORGE REGIONAL DISTRICT.

R. L. JOHNS LAND SURVEYING LTD.  
LEGAL AND ENGINEERING SURVEYS  
PRINCE GEORGE, B. C. V2L 2J4  
PHONE: (250)562-5759  
FAX: (250)562-5703

98113