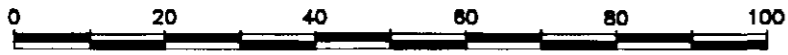


PLAN OF STATUTORY RIGHT-OF-WAY THROUGH
REM. LOT A, PLAN 20053
DISTRICT LOT 2400
CARIBOO DISTRICT

B.C.G.S. 93G.096

PURSUANT TO SECTION 113 OF THE LAND TITLE ACT.



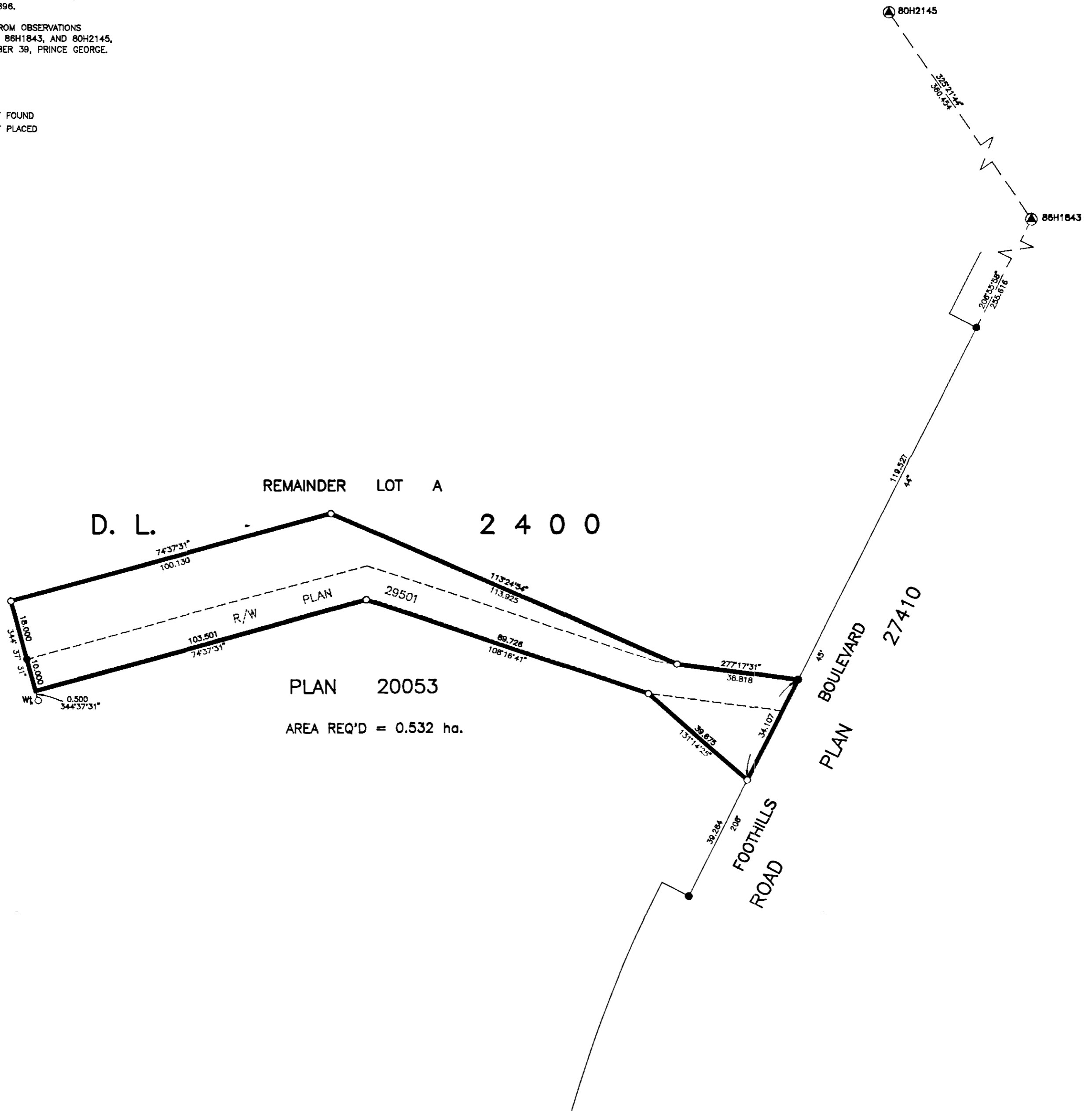
SCALE = 1 : 1000
ALL DISTANCES ARE SHOWN IN METRES.

THIS PLAN SHOWS GROUND-LEVEL MEASURED DISTANCES.
PRIOR TO COMPUTATION OF U.T.M. COORDINATES, MULTIPLY
BY COMBINED FACTOR 0.99950896.

GRID BEARINGS ARE DERIVED FROM OBSERVATIONS
BETWEEN CONTROL MONUMENTS 86H1843, AND 80H2145,
INTEGRATED SURVEY AREA NUMBER 39, PRINCE GEORGE.

LEGEND

- STANDARD IRON POST FOUND
- STANDARD IRON POST PLACED
- ⊙ CONTROL MONUMENT



PLAN No. PGP 43245

DEPOSITED IN THE LAND TITLE OFFICE
AT PRINCE GEORGE, B.C., THIS 18th
DAY OF November, 1998

Linda Kilbride/OK
REGISTRAR

pm50582

I, RONALD L. JOHNS, A BRITISH COLUMBIA LAND SURVEYOR, OF PRINCE GEORGE, IN BRITISH COLUMBIA, CERTIFY THAT I WAS PRESENT AT AND PERSONALLY SUPERINTENDED THE SURVEY REPRESENTED BY THIS PLAN AND THAT THE SURVEY AND PLAN ARE CORRECT. THE SURVEY WAS COMPLETED ON THE 4TH DAY OF AUGUST, 1998.

R.L. Johns
R.L. JOHNS, B.C.L.S., C.L.S.

THIS PLAN LIES WITHIN THE FRASER-FORT GEORGE REGIONAL DISTRICT.

R. L. JOHNS LAND SURVEYING LTD.
LEGAL AND ENGINEERING SURVEYS
240 VICTORIA STREET
PRINCE GEORGE, B. C. V2L 2J4
PHONE: (250)562-5759
FAX: (250)562-5703