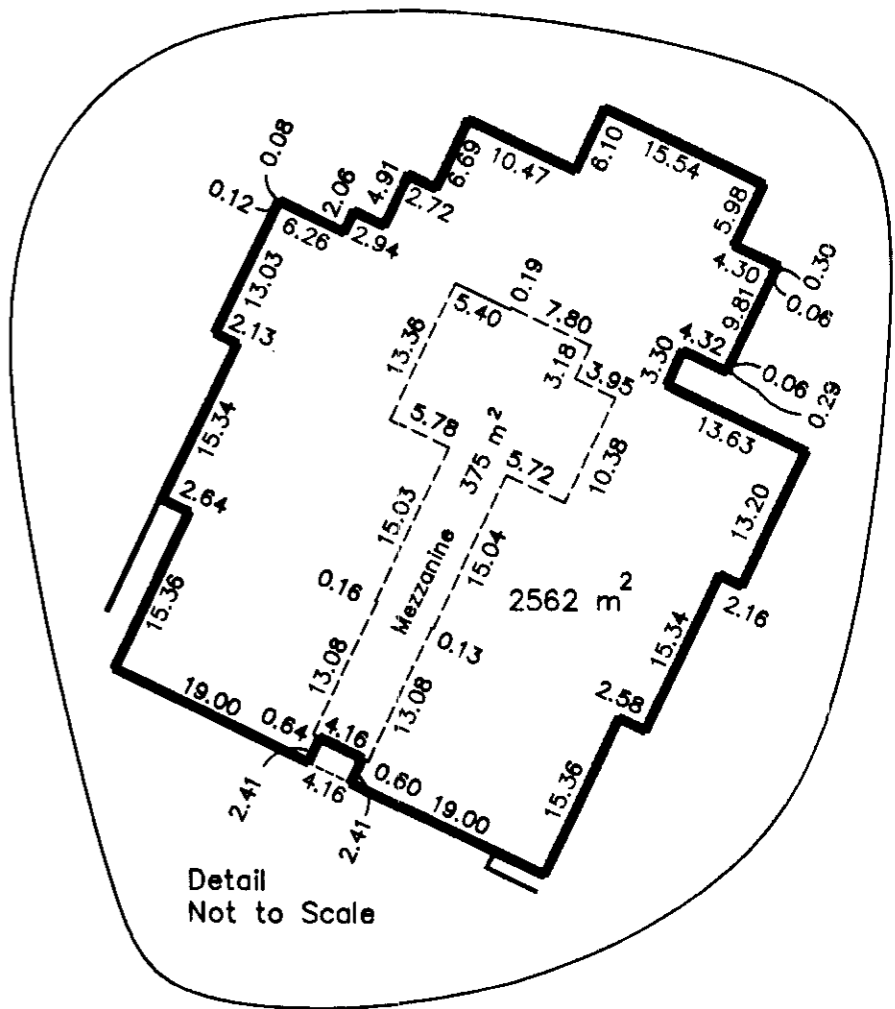
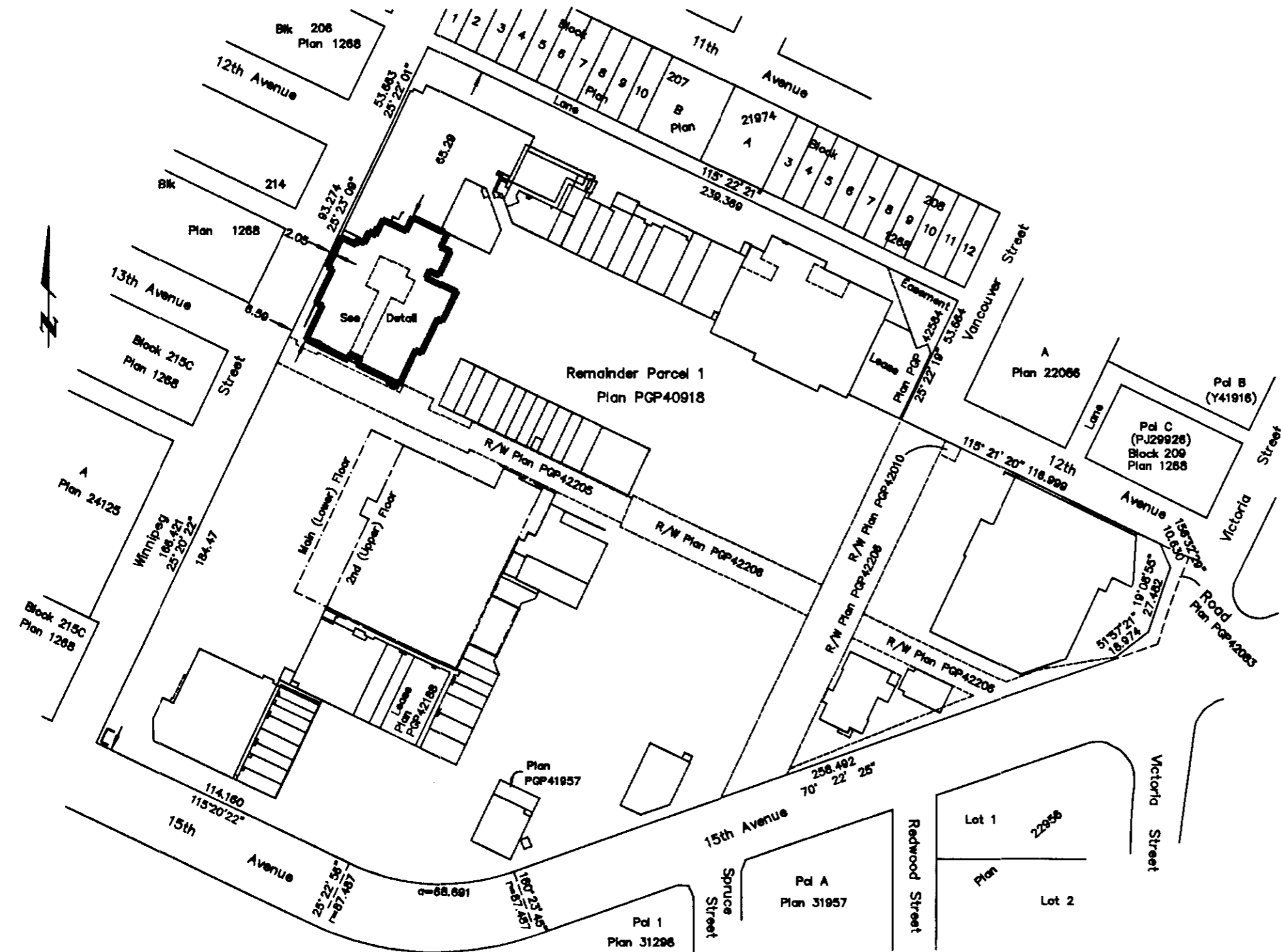


EXPLANATORY PLAN OF LEASE OF
A BUILDING ON PART OF REMAINDER
OF PARCEL 1, PLAN PGP40918,
DISTRICT LOT 343, CARIBOO DISTRICT.
Pursuant to Section 73 of the
Land Title Act.
B.C.G.S. 93G.097

Scale: 1 : 2000 (Distances are in metres)
50 25 0 50 100

PM 45828 PLAN NO. PGP 43093
Pd # 023-684-828 Deposited in the Land Title Office at Prince
George this 21 day of OCT. 1998

LINDA KILBRIDE
REGISTRAR
Princ



Certified Correct, according to
Land Title Office Records.
This 29th day of July, 1998

Gordon Kilbride
Gordon Kilbride, B.C.L.S.

This plan lies within the Fraser-Fort
George Regional District.

KILBRIDE LAND SURVEYING LTD.
British Columbia Land Surveyors
Prince George, B.C.
Ph: (250) 562-1196 Fax: 562-3856
F.B.- RA D.L.- 343(212) FILE No. 971172LR