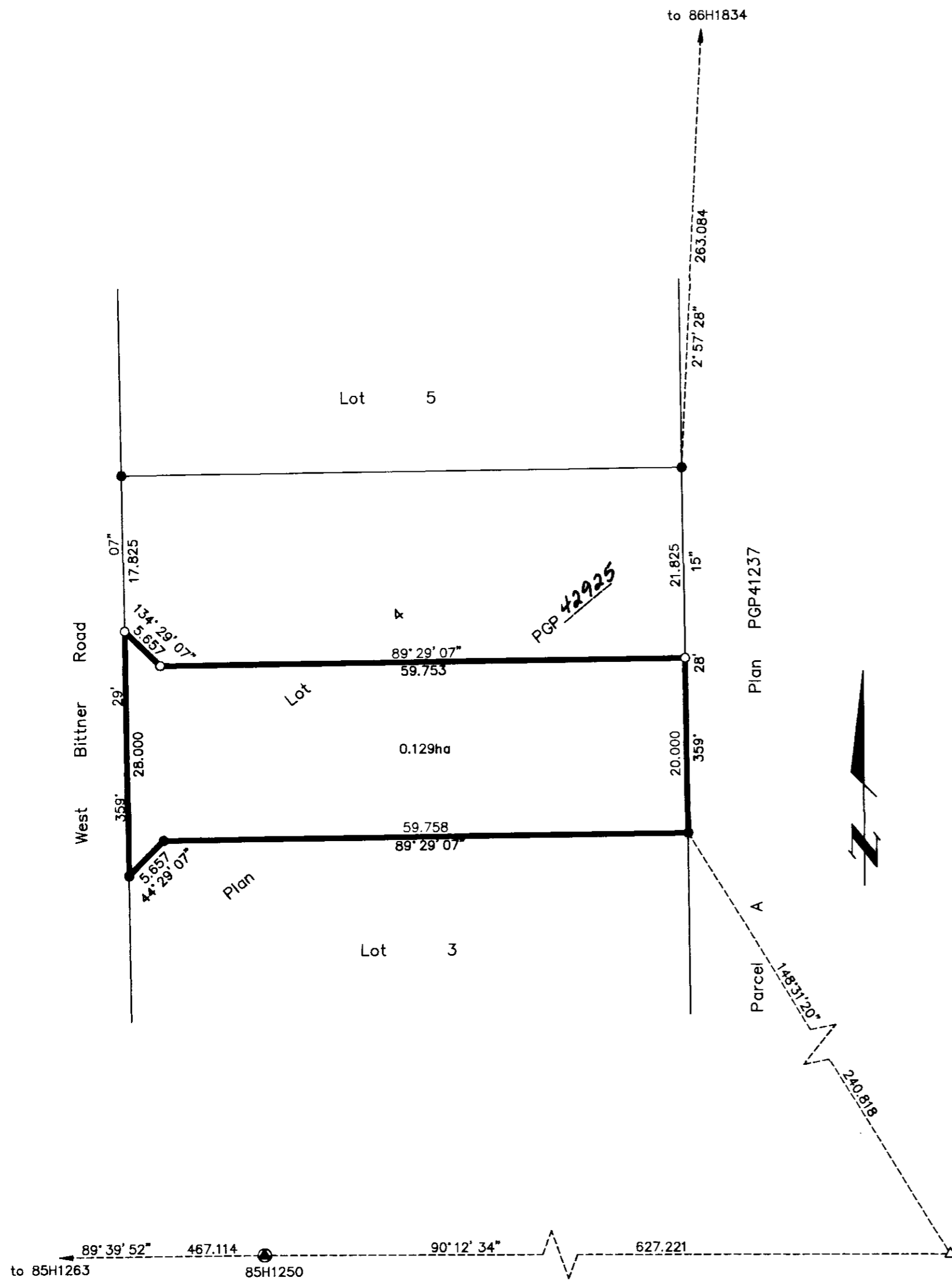


PLAN NO. PGP 42926

Deposited in the Land Title Office at Prince George this 1st day of Sept 1998

Linda I Kilbride/dg
REGISTRAR Pm 37912



REFERENCE PLAN TO ACCOMPANY A COVENANT WITHIN LOT 4, PLAN PGP 42925 DISTRICT LOT 633, CARIBOO DISTRICT.

PREPARED PURSUANT TO SECTION 219 OF THE LAND TITLE ACT. B.C.L.S. 93G.097

Scale: 1 : 500 (Distances are in metres)



Grid bearings are derived from observations between control monuments 85H1250 and 85H1263, integrated survey area number 39, City of Prince George, B.C.

Note: This plan shows ground level measured distances. Prior to computation of U.T.M. co-ordinates multiply by the combined factor 0.99950108

- LEGEND**
- Standard Iron Post Found
 - Standard Iron Post Placed
 - ⊙ Control Monument
 - △ Traverse Hub Placed

I, Dale L. Keown, a British Columbia Land Surveyor of Prince George in British Columbia, certify that I was present at and personally supervised the survey represented by this plan and that the survey and plan are correct. The survey was completed on the 30th day of September, 1997.

Dale Keown
Dale L. Keown, B.C.L.S.

This plan lies within the Fraser-Fort George Regional District.

KILBRIDE LAND SURVEYING LTD. British Columbia Land Surveyors Prince George, B.C. Ph: (250) 562-1196 Fax: 562-3656		
F.B.- RA	D.L.- 633	FILE No. - 970748RC