

REFERENCE PLAN OF STATUTORY RIGHT OF WAY
OVER PART OF LOT A, PLAN PGP 42725,
DISTRICT LOT 343, CARIBOO DISTRICT.
B.C.G.S. 93G.097

PLAN NO. PGP42726

Deposited in the Land Title Office at Prince
George this 16 day of July 1998.

Linda J. Kilbride/ag
REGISTRAR
pm 30130

Scale: 1 : 2500 (Distances are in metres)

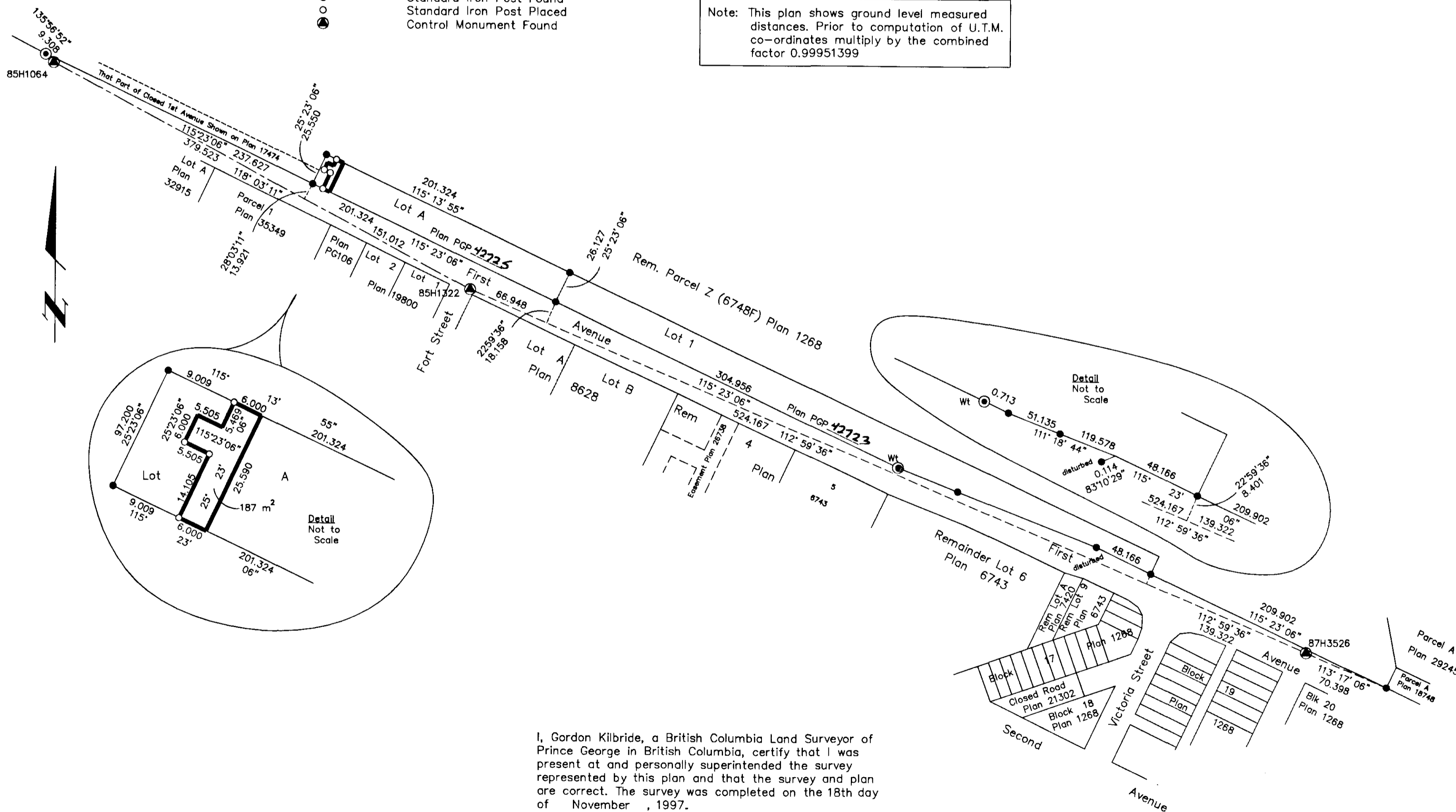


LEGEND

- Standard Concrete Post Found
- Standard Iron Post Found
- Standard Iron Post Placed
- ▲ Control Monument Found

Grid bearings are derived from observations between control monuments 85H1064 and 85H1322, integrated survey area number 39, City of Prince George, B.C.

Note: This plan shows ground level measured distances. Prior to computation of U.T.M. co-ordinates multiply by the combined factor 0.99951399



I, Gordon Kilbride, a British Columbia Land Surveyor of Prince George in British Columbia, certify that I was present at and personally superintended the survey represented by this plan and that the survey and plan are correct. The survey was completed on the 18th day of November, 1997.

Gordon Kilbride
Gordon Kilbride, B.C.L.S.
LTO Client No. 010909

This plan lies within the Fraser-Fort
George Regional District.

KILBRIDE LAND SURVEYING LTD. British Columbia Land Surveyors Prince George, B.C. Ph: (250) 562-1196 Fax: 562-3656		
F.B.- RA	D.L.- 343(Z)	FILE No. 960808RW