

PLAN NO. PGP 42662

Deposited in the Land Title Office at Prince George this 18 day of June 1998.

L. Kilbride
 REGISTRAR
 PM 25429 024-189-049
 024-189-057

REFERENCE PLAN OF EASEMENT ON LOTS 2 & 3, PLAN PGP 42660, DISTRICT LOT 4200, CARIBOO DISTRICT.

Pursuant to Section 99 of the Land Title Act.

B.C.G.S. 93G.096

Scale: 1 : 2500 (Distances are in metres)

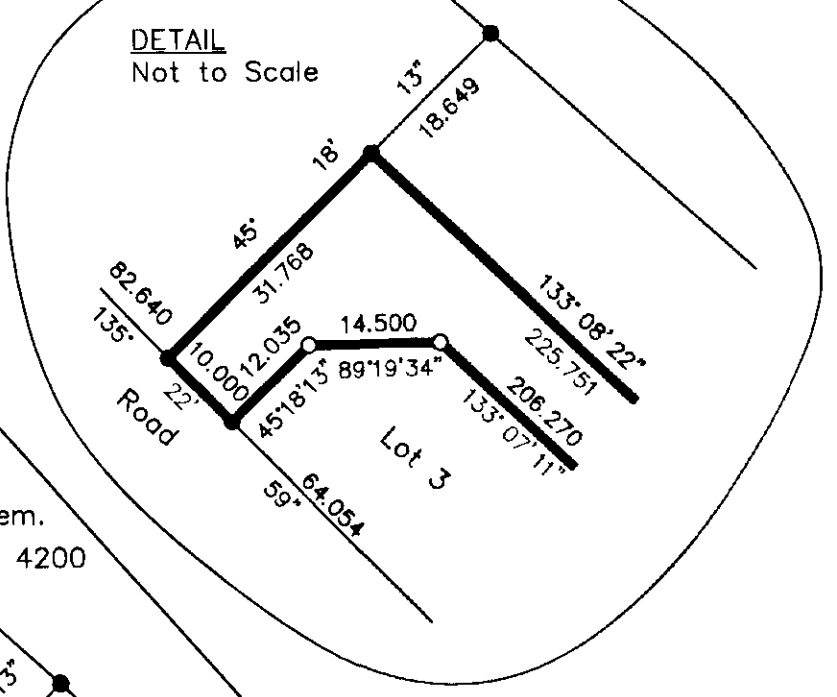
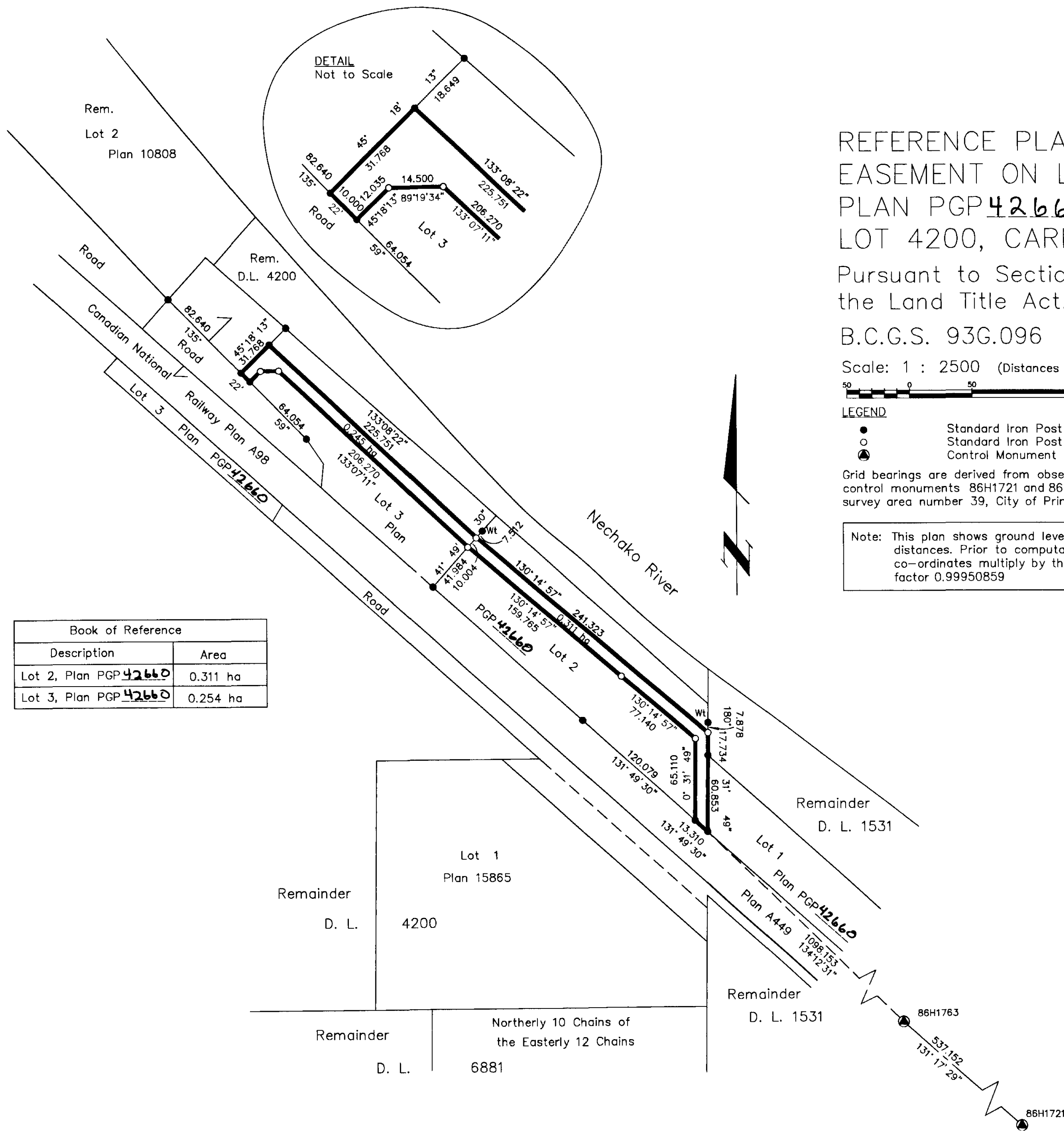


LEGEND

- Standard Iron Post Found
- Standard Iron Post Placed
- ⊙ Control Monument Found

Grid bearings are derived from observations between control monuments 86H1721 and 86H1763, integrated survey area number 39, City of Prince George, B.C.

Note: This plan shows ground level measured distances. Prior to computation of U.T.M. co-ordinates multiply by the combined factor 0.99950859



Book of Reference	
Description	Area
Lot 2, Plan PGP <u>42660</u>	0.311 ha
Lot 3, Plan PGP <u>42660</u>	0.254 ha

I, Gordon Kilbride, a British Columbia Land Surveyor of Prince George in British Columbia, certify that I was present at and personally supervised the survey represented by this plan and that the survey and plan are correct. The survey was completed on the 5th day of May, 1998.

Gordon Kilbride
 Gordon Kilbride, B.C.L.S.
 LTO Client No. 010909

This plan lies within the Fraser-Fort George Regional District.

KILBRIDE LAND SURVEYING LTD. British Columbia Land Surveyors Prince George, B.C. Ph: (250) 562-1196 Fax: 562-3656		
F.B.- VV37	D.L.- 1531	FILE No. 960869A