

PLAN NO. PGP 42661

Deposited in the Land Title Office at Prince George this 8 day of June 1998

L. Kilbride
REGISTRAR

PM25428 024-189-031
024-189-049

REFERENCE PLAN OF STATUTORY
RIGHT OF WAY ON
LOTS 1 AND 2, PLAN PGP 42660,
DISTRICT LOTS 1531 AND 4200,
CARIBOO DISTRICT.
Pursuant to Section 99 of the
Land Title Act.
B.C.G.S. 93G.096

Scale: 1 : 2500 (Distances are in metres)



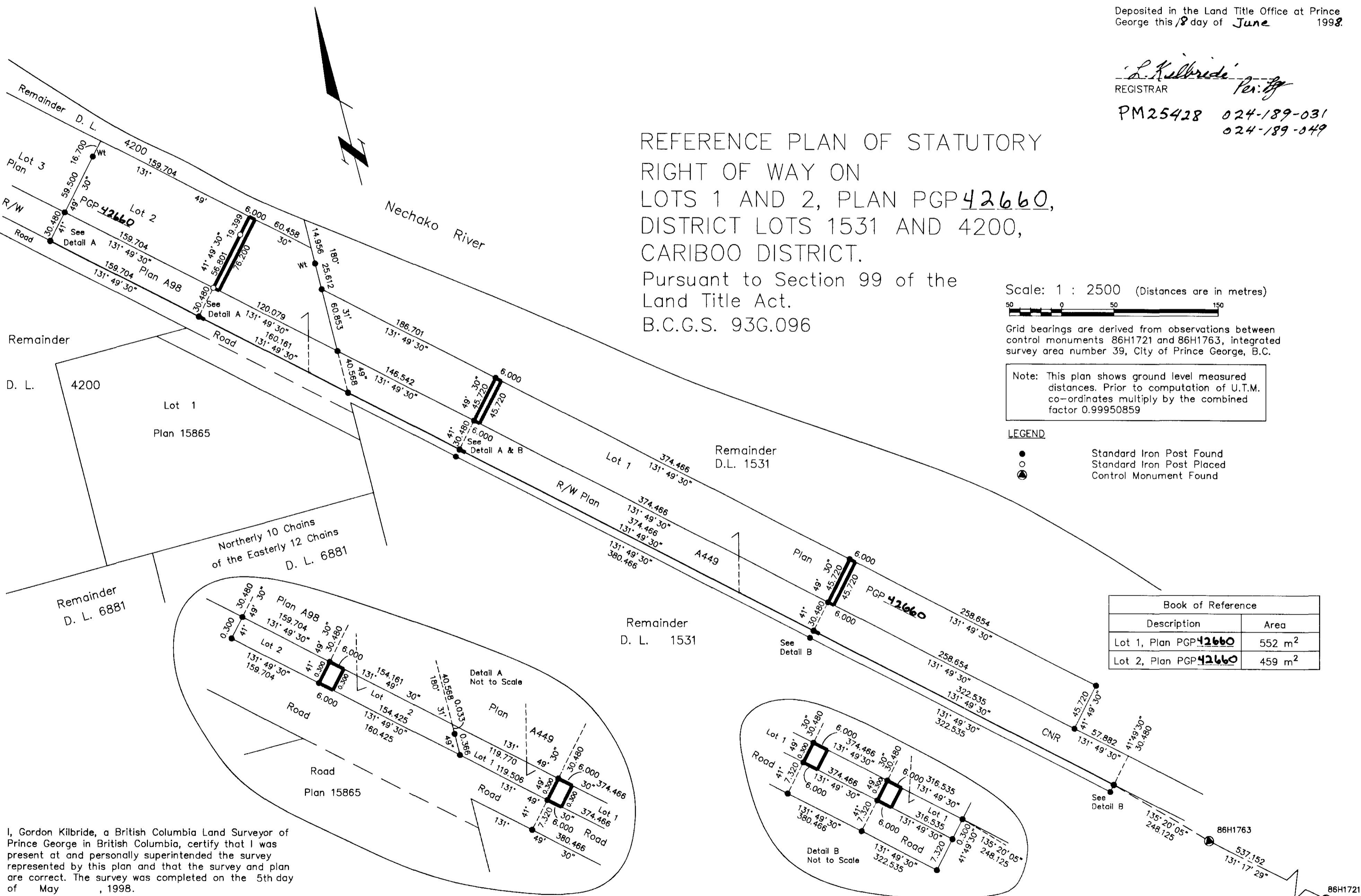
Grid bearings are derived from observations between control monuments 86H1721 and 86H1763, integrated survey area number 39, City of Prince George, B.C.

Note: This plan shows ground level measured distances. Prior to computation of U.T.M. co-ordinates multiply by the combined factor 0.99950859

LEGEND

- Standard Iron Post Found
- Standard Iron Post Placed
- ⊙ Control Monument Found

Book of Reference	
Description	Area
Lot 1, Plan PGP 42660	552 m ²
Lot 2, Plan PGP 42660	459 m ²



I, Gordon Kilbride, a British Columbia Land Surveyor of Prince George in British Columbia, certify that I was present at and personally superintended the survey represented by this plan and that the survey and plan are correct. The survey was completed on the 5th day of May, 1998.

Gordon Kilbride
Gordon Kilbride, B.C.L.S.
LTO Client No. 010909

This plan lies within the Fraser-Fort George Regional District.

KILBRIDE LAND SURVEYING LTD.
British Columbia Land Surveyors
Prince George, B.C.
Ph: (250) 562-1196 Fax: 562-3656

F.B.- VV5/WJ2	D.L.- 1531	FILE No. 960869D
---------------	------------	------------------