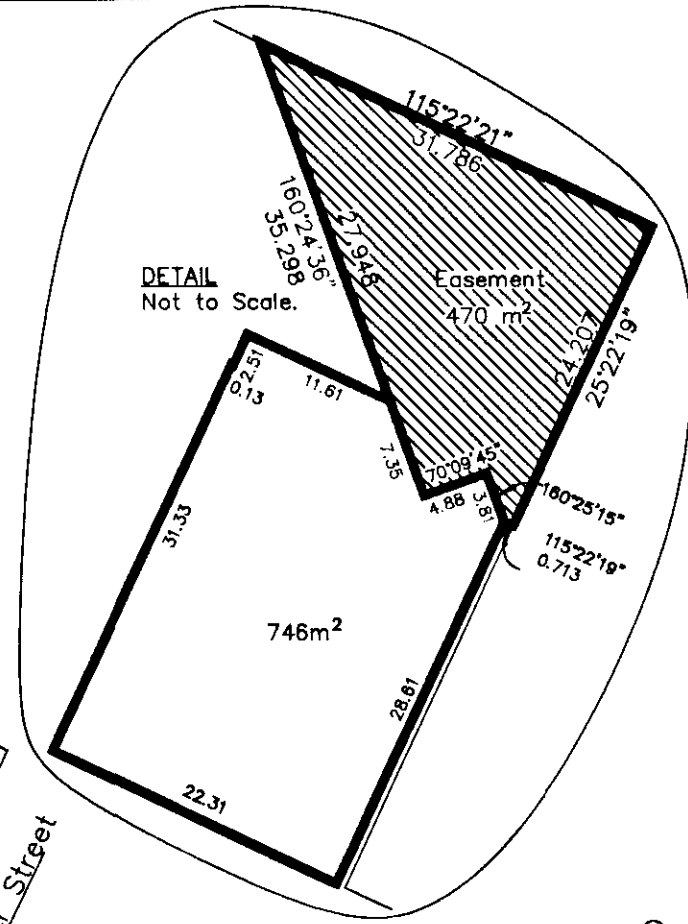


EXPLANATORY PLAN OF LEASE OF PART OF A BUILDING AND EASEMENT SITUATED ON PART OF PARCEL 1, PLAN PGP40918, DISTRICT LOT 343, CARIBOO DISTRICT. Pursuant to Section 73 of the Land Title Act. B.C.G.S. 93G.097

PLAN NO. PGP 42584

Deposited in the Land Title Office at Prince George this / day of *JUNE* 1998.

*Gordon Kilbride* M  
REGISTRAR PH 22486



Scale: 1 : 2000 (Distances are in metres)



LEGEND

Denotes Easement

Certified Correct, according to Land Title Office Records. This 20th day of January, 1998.

*Gordon Kilbride*

Gordon Kilbride, B.C.L.S.  
LTO Client No. 010909

This plan lies within the Fraser-Fort George Regional District.

**KILBRIDE LAND SURVEYING LTD.**  
British Columbia Land Surveyors  
Prince George, B.C.  
Ph: (250) 562-1196 Fax: 562-3656

F.B.- RA      D.L.- 343(212)      FILE No. 971198L

