

26-FF-226

PLAN NO. PGP 42547

Remainder
D.L. 953

Deposited in the Land Title Office at Prince
George this 22 day of May 1998

Linda J. Kilbride/dg
REGISTRAR
PM 20929

Lot 1
Plan 22461
D.L. 953

Remainder
D.L. 935

EXPLANATORY PLAN TO ACCOMPANY
A RESTRICTIVE COVENANT ON
PART OF THE REMAINDER OF
DISTRICT LOT 935,
CARIBOO DISTRICT.

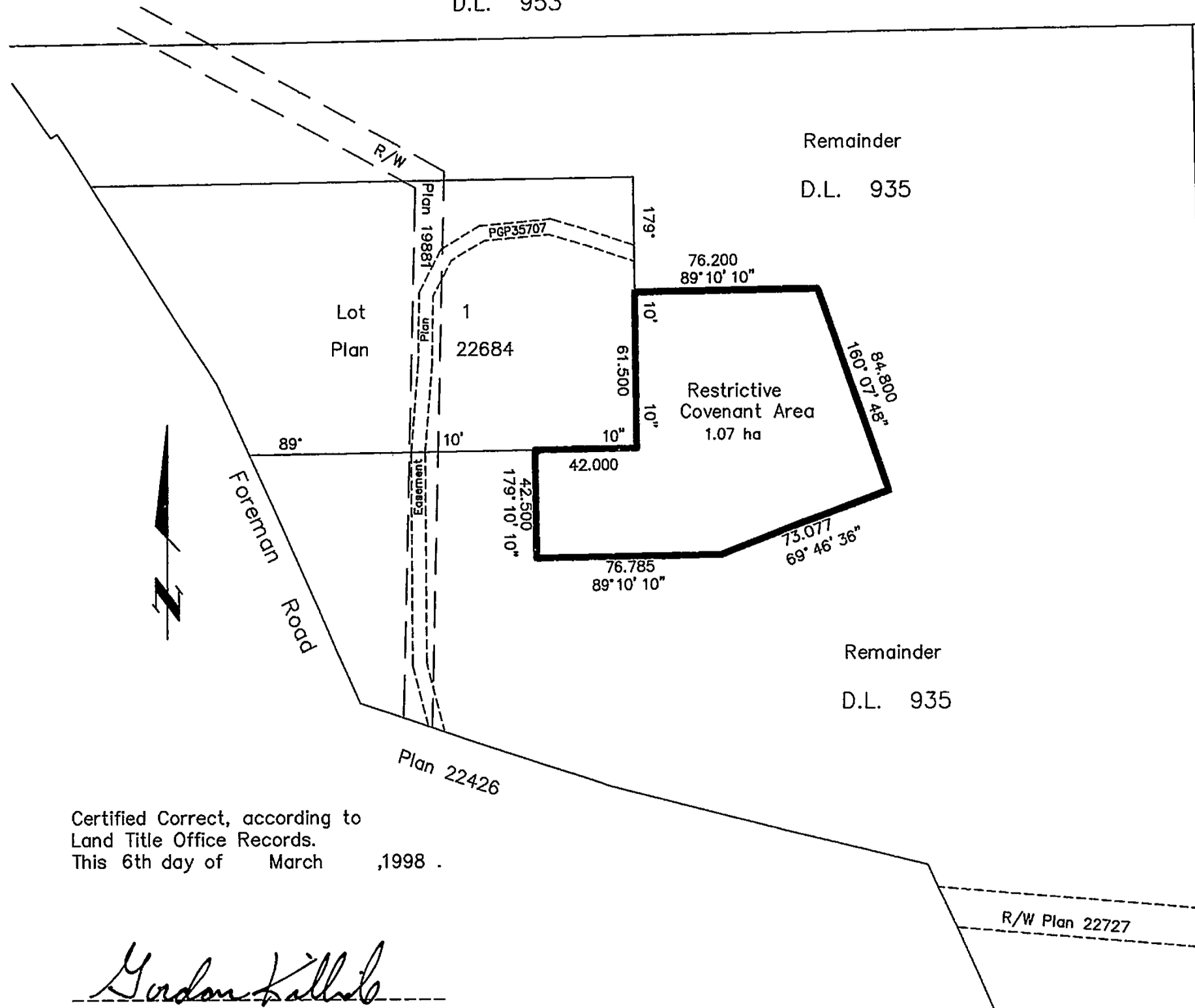
Pursuant to Section 219 of
the Land Title Act.
B.C.G.S. 93G.097

Scale: 1 : 2000 (Distances are in metres)



Bearings are astronomic, derived from
Plan 22684

Remainder
D.L. 935



Certified Correct, according to
Land Title Office Records.
This 6th day of March, 1998.

Gordon Kilbride
Gordon Kilbride, B.C.L.S.
LTO Client No. 010909

This plan lies within the Fraser-Fort
George Regional District.

KILBRIDE LAND SURVEYING LTD.
British Columbia Land Surveyors
Prince George, B.C.
Ph: (250) 562-1196 Fax: 562-3656