

REFERENCE PLAN OF STATUTORY RIGHT OF WAY  
THROUGH LOT 7, PLAN 11234  
DISTRICT LOT 4046  
CARIBOO DISTRICT

B.C.G.S. 93G.097  
PURSUANT TO SECTION 218 OF THE LAND TITLE ACT



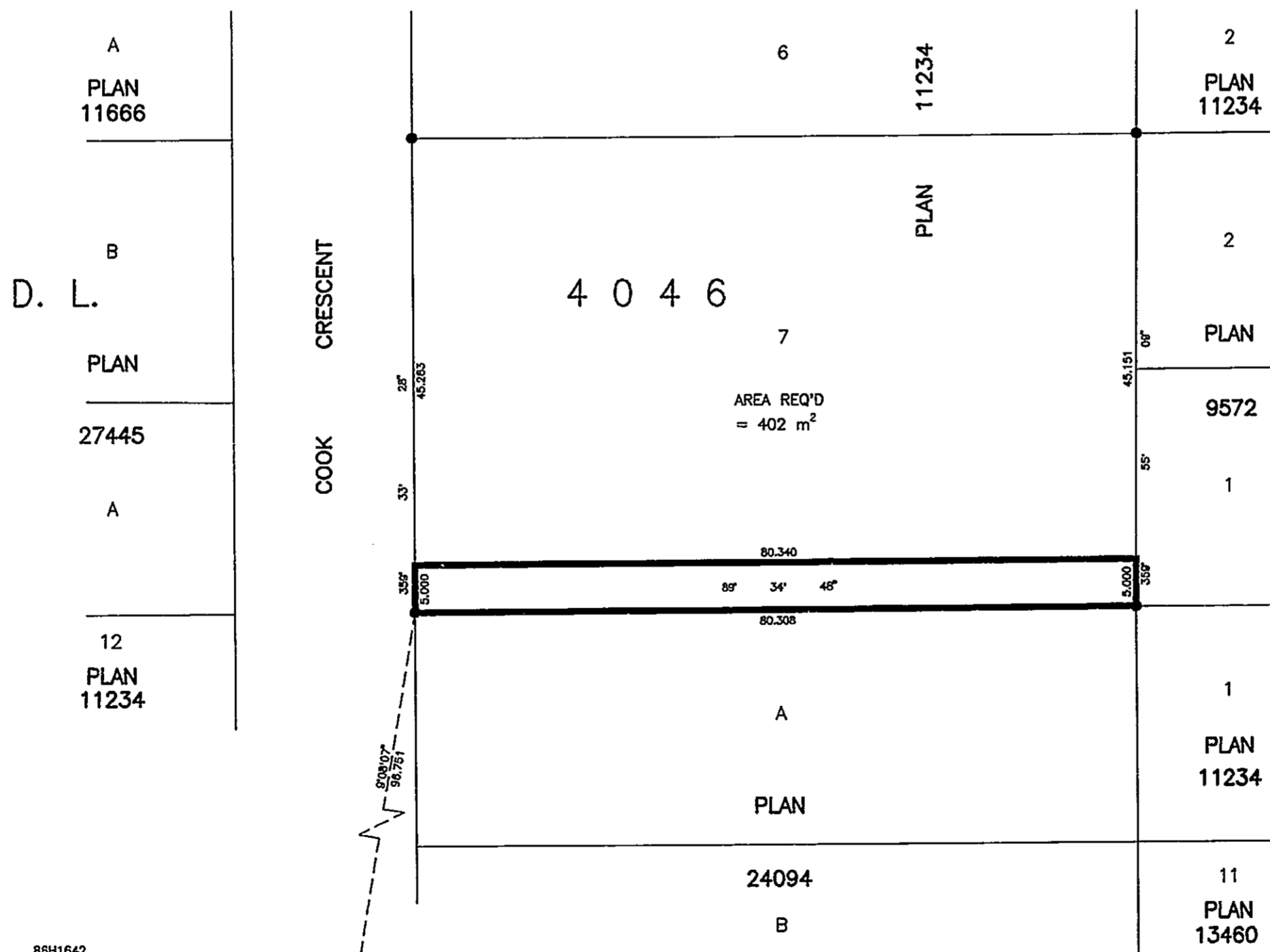
SCALE = 1 : 500  
ALL DISTANCES ARE SHOWN IN METRES.

THIS PLAN SHOWS GROUND-LEVEL MEASURED DISTANCES.  
PRIOR TO COMPUTATION OF U.T.M. COORDINATES, MULTIPLY  
BY COMBINED FACTOR 0.99949226.

GRID BEARINGS ARE DERIVED FROM OBSERVATIONS  
BETWEEN CONTROL MONUMENTS 86H1642, AND 86H1668,  
INTEGRATED SURVEY AREA NUMBER 39, PRINCE GEORGE.

LEGEND

- STANDARD IRON POST FOUND
- STANDARD IRON POST PLACED
- △ CONTROL MONUMENT



*26-F-276*

PLAN No. PGP 42543

DEPOSITED IN THE LAND TITLE OFFICE  
AT PRINCE GEORGE, B.C., THIS 21<sup>ST</sup>  
DAY OF MAY, 1998

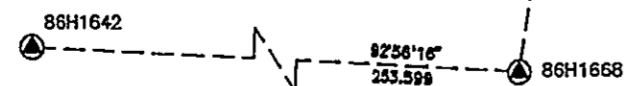
Linda Kilbride/Ox  
REGISTRAR

*pm 20689X*

I, RONALD L. JOHNS, A BRITISH COLUMBIA LAND SURVEYOR, OF PRINCE GEORGE, IN BRITISH COLUMBIA, CERTIFY THAT I WAS PRESENT AT AND PERSONALLY SUPERINTENDED THE SURVEY REPRESENTED BY THIS PLAN AND THAT THE SURVEY AND PLAN ARE CORRECT. THE SURVEY WAS COMPLETED ON THE 3RD DAY OF APRIL, 1998.

*R. L. Johns*

R.L. JOHNS, B.C.L.S., C.L.S.



THIS PLAN LIES WITHIN THE FRASER-FORT GEORGE REGIONAL DISTRICT.

R. L. JOHNS LAND SURVEYING LTD.  
LEGAL AND ENGINEERING SURVEYS  
240 VICTORIA STREET  
PRINCE GEORGE, B. C. V2L 2J4  
PHONE: (250)562-5759  
FAX: (250)562-5703

98041 X4-18