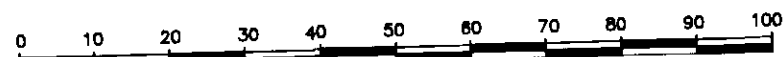


REFERENCE PLAN OF STATUTORY RIGHT OF WAY  
THROUGH REM. N.E. 1/4  
DISTRICT LOT 2433  
CARIBOO DISTRICT

B.C.G.S. 93J.007  
PURSUANT TO SECTION 218 OF THE LAND TITLE ACT



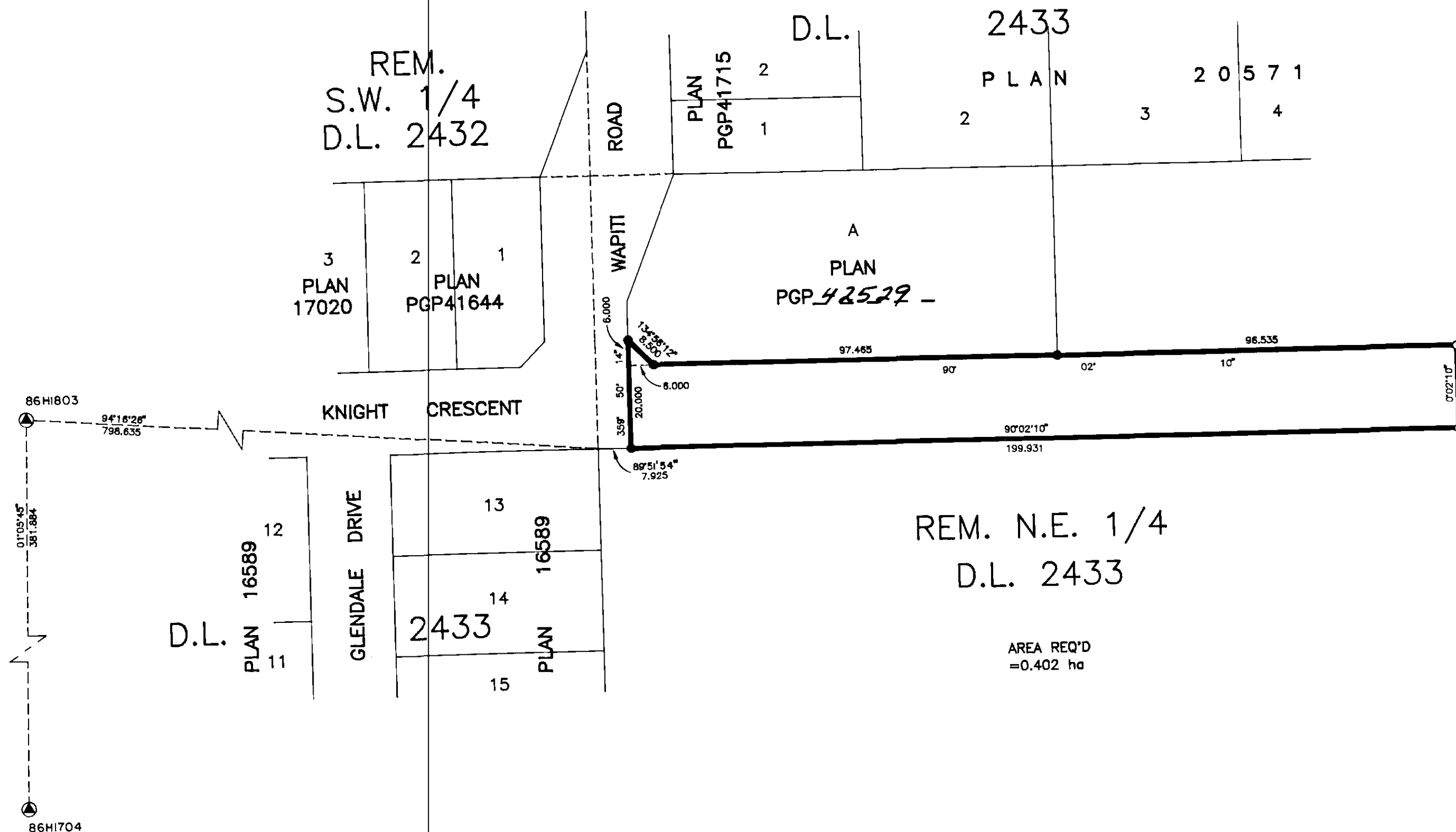
SCALE = 1 : 1000  
ALL DISTANCES ARE SHOWN IN METRES.

THIS PLAN SHOWS GROUND-LEVEL MEASURED DISTANCES.  
PRIOR TO COMPUTATION OF U.T.M. COORDINATES, MULTIPLY  
BY COMBINED FACTOR 0.99948420.

GRID BEARINGS ARE DERIVED FROM OBSERVATIONS  
BETWEEN CONTROL MONUMENTS 86H1704, AND 86H1803,  
INTEGRATED SURVEY AREA NUMBER 39, PRINCE GEORGE.

LEGEND

- STANDARD IRON POST FOUND
- STANDARD IRON POST PLACED
- ⊙ CONTROL MONUMENT



PLAN No. PGP 42530

DEPOSITED IN THE LAND TITLE OFFICE  
AT PRINCE GEORGE, B.C., THIS 20  
DAY OF MAY, 1998

*Rinda Hilbide*  
REGISTRAR  
PM20276

I, RONALD L. JOHNS, A BRITISH COLUMBIA LAND  
SURVEYOR, OF PRINCE GEORGE, IN BRITISH COLUMBIA,  
CERTIFY THAT I WAS PRESENT AT AND PERSONALLY  
SUPERINTENDED THE SURVEY AND PLAN ARE CORRECT.  
THE SURVEY WAS COMPLETED ON THE 16TH DAY OF  
FEBRUARY, 1998.

*R.L. Johns*  
R.L. JOHNS, B.C.L.S., C.L.S.

THIS PLAN LIES WITHIN THE FRASER-  
FORT GEORGE REGIONAL DISTRICT.

R. L. JOHNS LAND SURVEYING LTD.  
LEGAL AND ENGINEERING SURVEYS  
240 VICTORIA STREET  
PRINCE GEORGE, B. C. V2L 2J4  
PHONE: (250)582-5759  
FAX: (250)582-5703

97-266 X8-31