

# 26-FF-226

PLAN NO. PGP 42510

Deposited in the Land Title Office at Prince George this 14 day of MAY 1998.

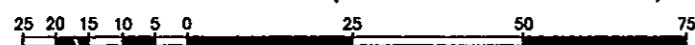
*Gordon Kilbride inc*  
REGISTRAR  
PH 19512

REFERENCE PLAN OF STATUTORY  
RIGHT OF WAY WITHIN LOT 1,  
PLAN PGP42509, DISTRICT LOT 754,  
CARIBOO DISTRICT.

Pursuant to Section 113 of the  
Land Title Act.

B.C.G.S. 930.087

Scale: 1 : 1000 (Distances are in metres)



D.L.  
2003

Lot 1  
Plan 9567

Road Plan PGP39017

Parcel A  
Plan PGP37814

Remainder  
Lot 63  
Plan 10486

Lot 3  
Plan PGP39952

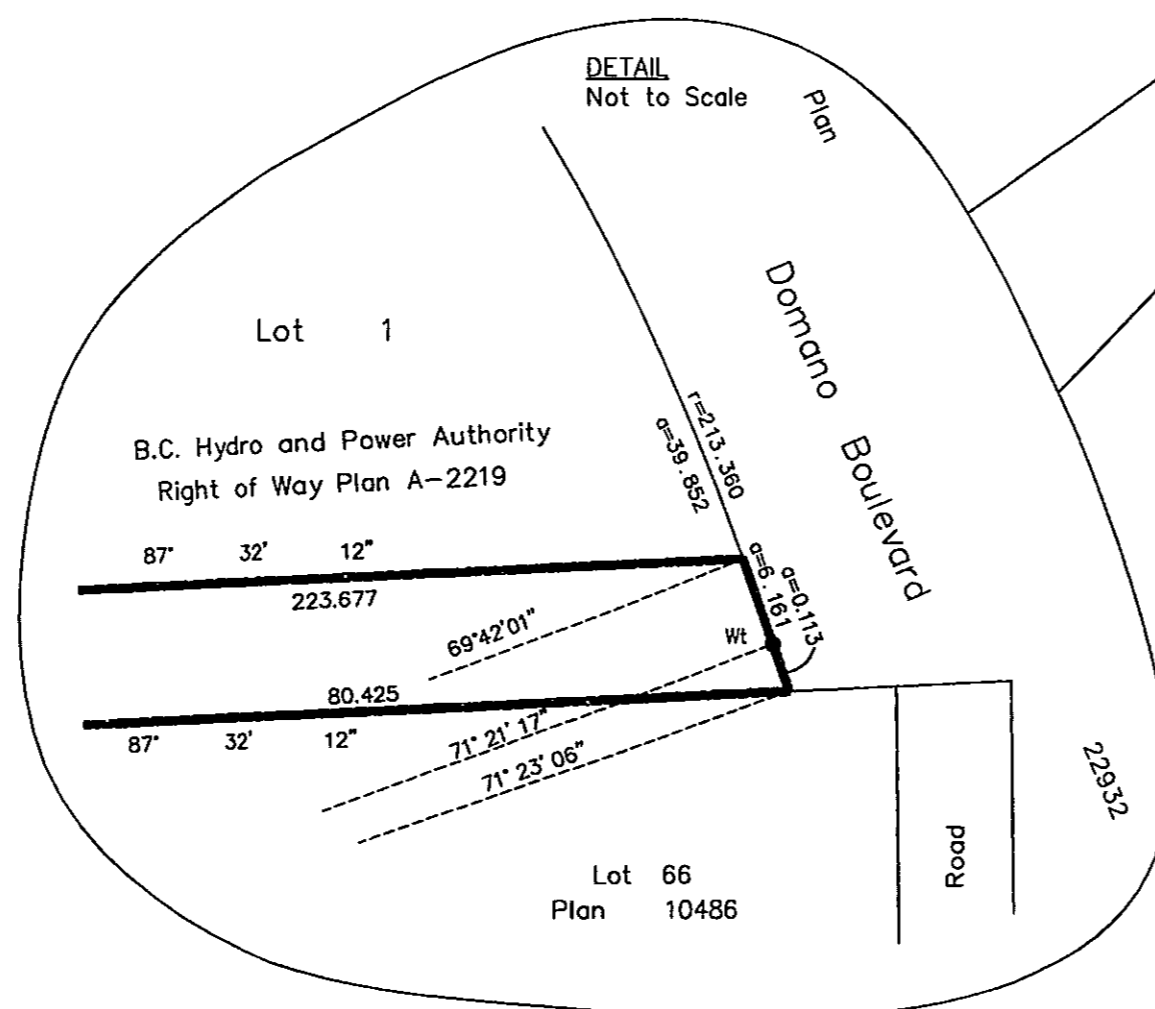
Lot 4  
Plan PGP39683

Lot 66

Plan 10486

Domano  
Boulevard  
22932

Lot 4  
Plan 23130



Grid bearings are derived from observations between control monuments 86H1823 and 86H1549, integrated survey area number 39, City of Prince George, B.C.

Note: This plan shows ground level measured distances. Prior to computation of U.T.M. co-ordinates multiply by the combined factor 0.9995105393

**LEGEND**

- Standard Iron Post Found
- ⊙ Control Monument

I, Gordon Kilbride, a British Columbia Land Surveyor of Prince George in British Columbia, certify that I was present at and personally superintended the survey represented by this plan and that the survey and plan are correct. The survey was completed on the 14th day of November, 1997.

*Gordon Kilbride*  
Gordon Kilbride, B.C.L.S.  
LTO Client No. 010909

This plan lies within the Fraser-Fort George Regional District.

**KILBRIDE LAND SURVEYING LTD.**  
British Columbia Land Surveyors  
Prince George, B.C.  
Ph: (250) 562-1196 Fax: 562-3656

F.B.- TS58,UQ1 D.L.- 754 File No. -960747RW