

REFERENCE PLAN OF STATUTORY RIGHT OF WAY
 OVER PART OF REMAINDER OF LOT A, PLAN PGP36075,
 AND PART OF LOT 1, PLAN PGP 42464,
 DISTRICT LOT 747, CARIBOO DISTRICT.

PLAN NO. PGP 42465

Deposited in the Land Title Office at Prince
 George this 16 day of June 1997.

Pursuant to Section 113 of the Land Title Act.
 B.C.G.S. 93G.087

"G. Kilbride"
 REGISTRAR *per RK*

PM 17426

Scale: 1 : 2000 (Distances are in metres)

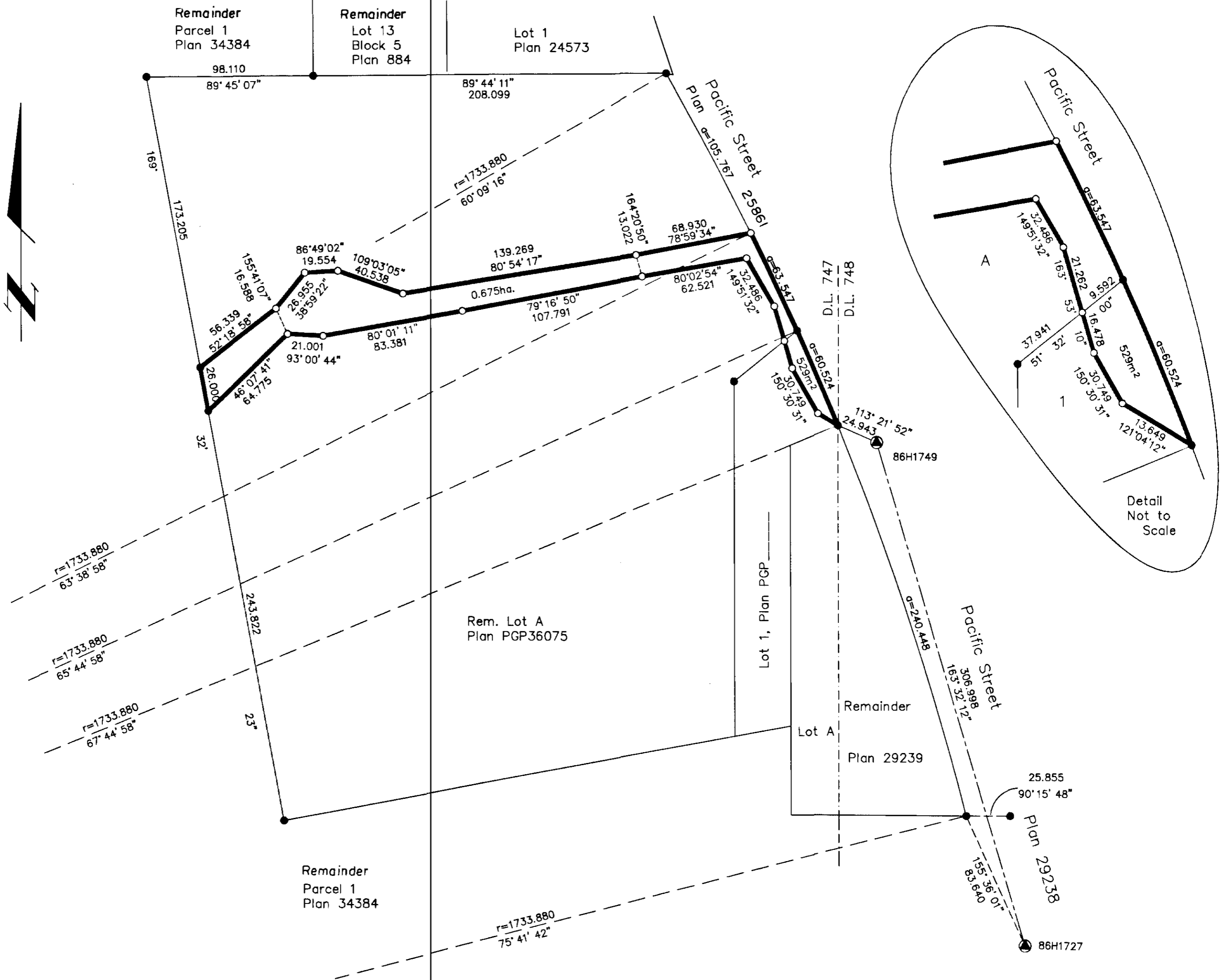


Grid bearings are derived from observations between
 control monuments 86H1749 and 86H1727, integrated
 survey area number 39, City of Prince George, B.C.

LEGEND

- Standard Iron Post Found
- Standard Iron Post Placed
- ⊙ Control Monument Found

Note: This plan shows ground level measured
 distances. Prior to computation of U.T.M.
 co-ordinates multiply by the combined
 factor 0.99950925



Detail
 Not to
 Scale

BOOK OF REFERENCE	
DESCRIPTION	AREA
Rem. Lot A, Plan PGP36075	0.675 ha
Lot 1, Plan PGP _____	529 m ²

I, Gordon Kilbride, a British Columbia Land Surveyor of
 Prince George in British Columbia, certify that I was
 present at and personally superintended the survey
 represented by this plan and that the survey and plan
 are correct. The survey was completed on the 20th day
 of October, 1997.

Gordon Kilbride

Gordon Kilbride, B.C.L.S.
 LTO Client No. 010909

This plan lies within the Fraser-Fort
 George Regional District.

KILBRIDE LAND SURVEYING LTD.
 British Columbia Land Surveyors
 Prince George, B.C.
 Ph: (250) 562-1196 Fax: 562-3656

F.B.- RA	D.L.- 747	FILE No. 970168RW
----------	-----------	-------------------

A2/S-32678