

26FF-226

PLAN NO. PGP 42206

Deposited in the Land Title Office at Prince George this 5 day of MARCH 1998

Gordon Kilbride
REGISTRAR PM9307

REFERENCE PLAN OF STATUTORY RIGHT OF WAY
IN REMAINDER OF PARCEL 1, PLAN PGP40918,
DISTRICT LOT 343, CARIBOO DISTRICT.

Pursuant to Section 113 of the Land Title Act.

B.C.G.S. 93G.097

Scale: 1 : 1250 (Distances are in metres)

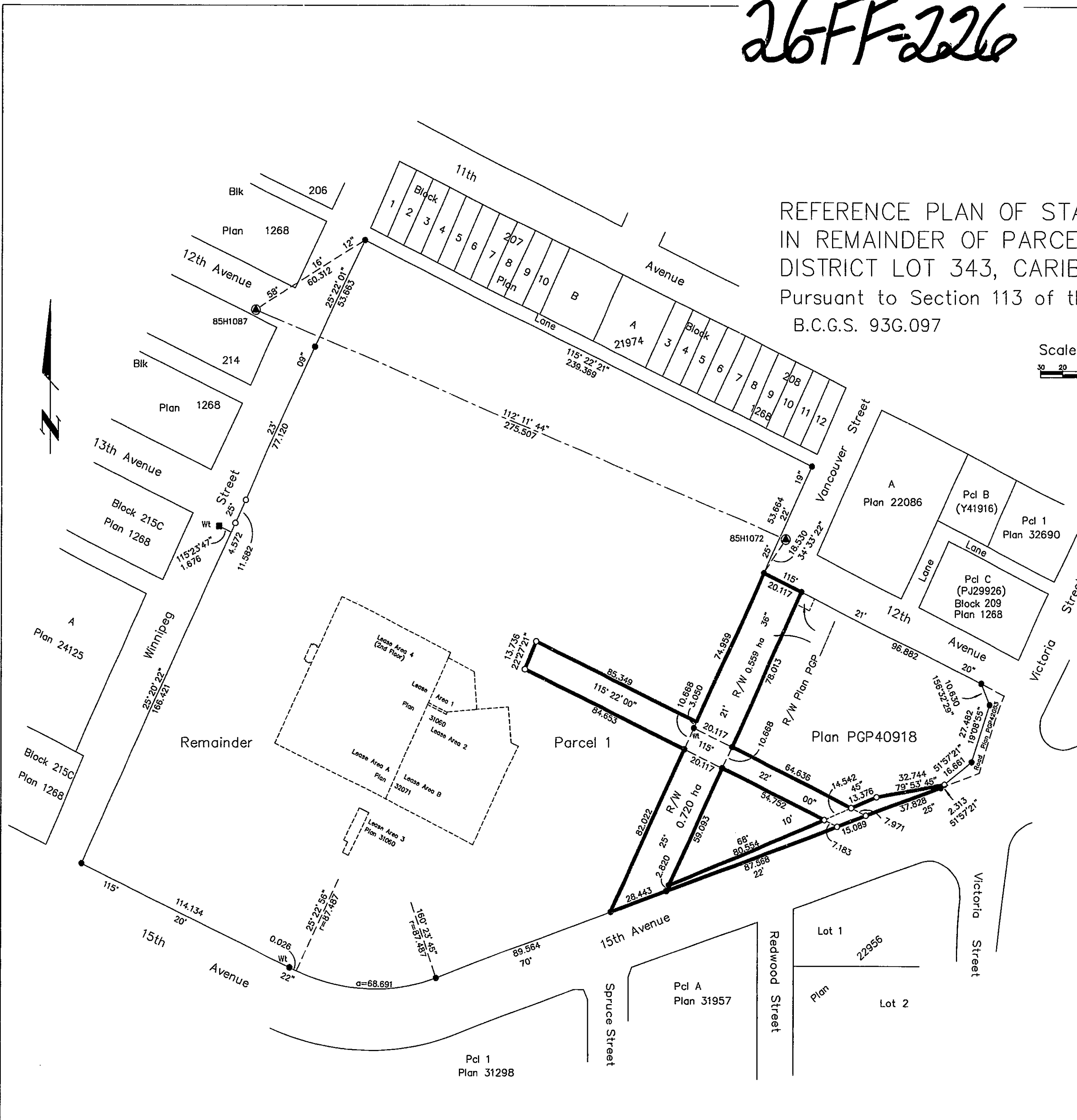


Note: This plan shows ground level measured distances. Prior to computation of U.T.M. co-ordinates multiply by the combined factor .99951301

Grid bearings are derived from observations between control monuments 85H1072 and 85H1087, integrated survey area number 39, City of Prince George, B.C.

LEGEND

- Lead Plug Found
- Standard Iron Post Found
- Standard Iron Post Placed
- ⊙ Control Monument Found



I, Gordon Kilbride, a British Columbia Land Surveyor of Prince George in British Columbia, certify that I was present at and personally supervised the survey represented by this plan and that the survey and plan are correct. The survey was completed on the 11th day of August, 1997.

Gordon Kilbride
Gordon Kilbride, B.C.L.S.
LTO Client No. 010909

This plan lies within the Fraser-Fort George Regional District.

KILBRIDE LAND SURVEYING LTD.
British Columbia Land Surveyors
Prince George, B.C.
Ph: (250) 562-1196 Fax: 562-3656

F.B.- RA	D.L.- 343(212)	FILE No. 960559R1
----------	----------------	-------------------