

26-FF-226

PLAN NO. PGP 42163

Deposited in the Land Title Office at Prince George this 23 day of FEBRUARY 1998

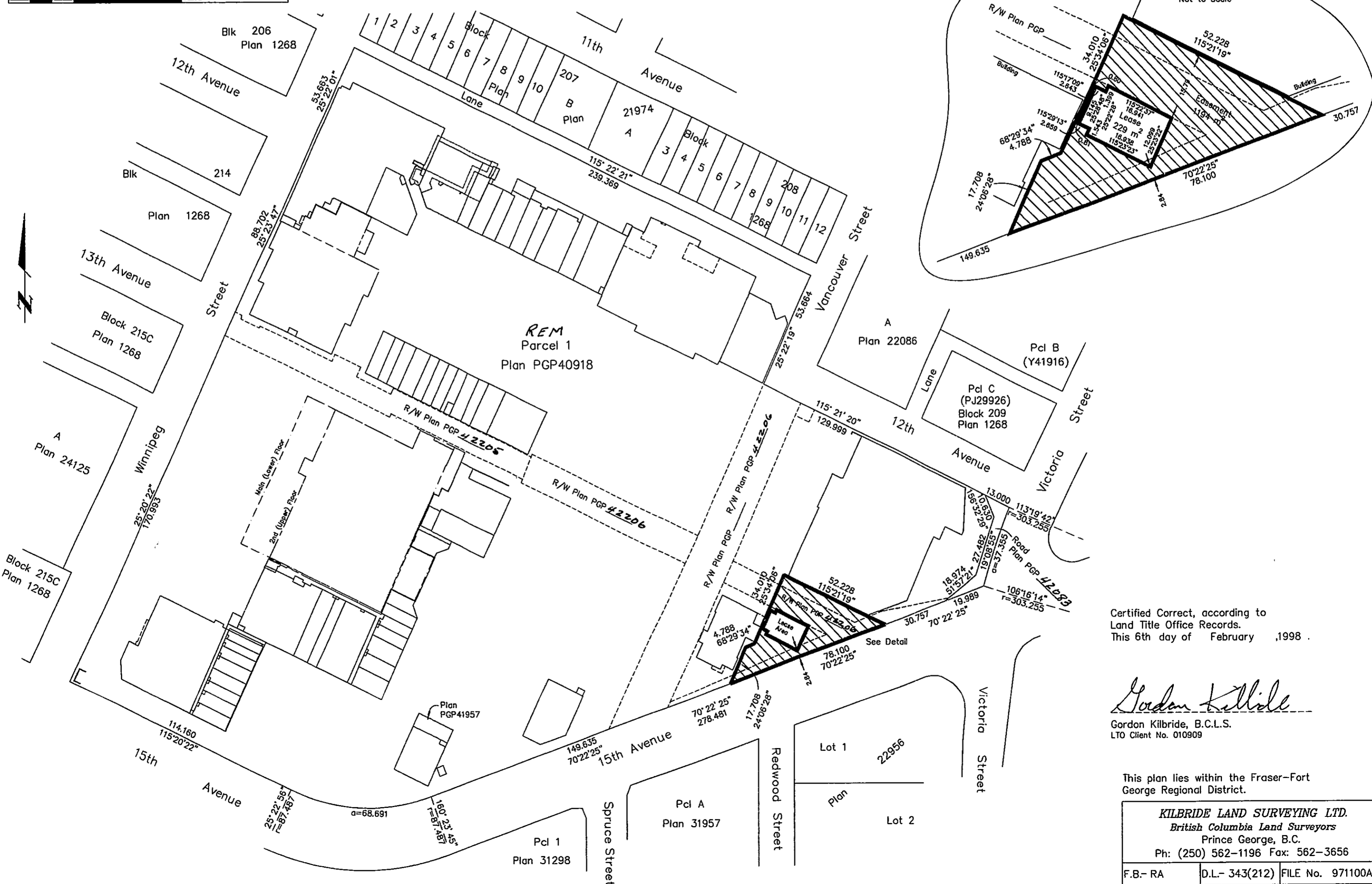
Linda Kilbride inc
REGISTRAR P117763

EXPLANATORY PLAN OF LEASE OF A BUILDING, AND AN EASEMENT AREA, ON PART OF PARCEL 1, PLAN PGP40918, DISTRICT LOT 343, CARIBOO DISTRICT.

Pursuant to Section 73 of the Land Title Act.

B.C.G.S. 93G.097

Scale: 1 : 1250 (Distances are in metres)



Certified Correct, according to Land Title Office Records. This 6th day of February, 1998.

Gordon Kilbride
Gordon Kilbride, B.C.L.S.
LTO Client No. 010909

This plan lies within the Fraser-Fort George Regional District.

KILBRIDE LAND SURVEYING LTD. British Columbia Land Surveyors Prince George, B.C. Ph: (250) 562-1196 Fax: 562-3656		
F.B.- RA	D.L.- 343(212)	FILE No. 971100A