

# 26FF-226

PLAN NO. PGP 42136

EXPLANATORY PLAN OF EASEMENT  
ON STRATA LOTS A, B, C, D, E AND F,  
PLAN PGS 277, DISTRICT LOT 754,  
CARIBOO DISTRICT.

Deposited in the Land Title Office at Prince  
George this 18 day of February 1998

Pursuant to Section 99 of the  
Land Title Act.  
B.C.G.S. 93G.087

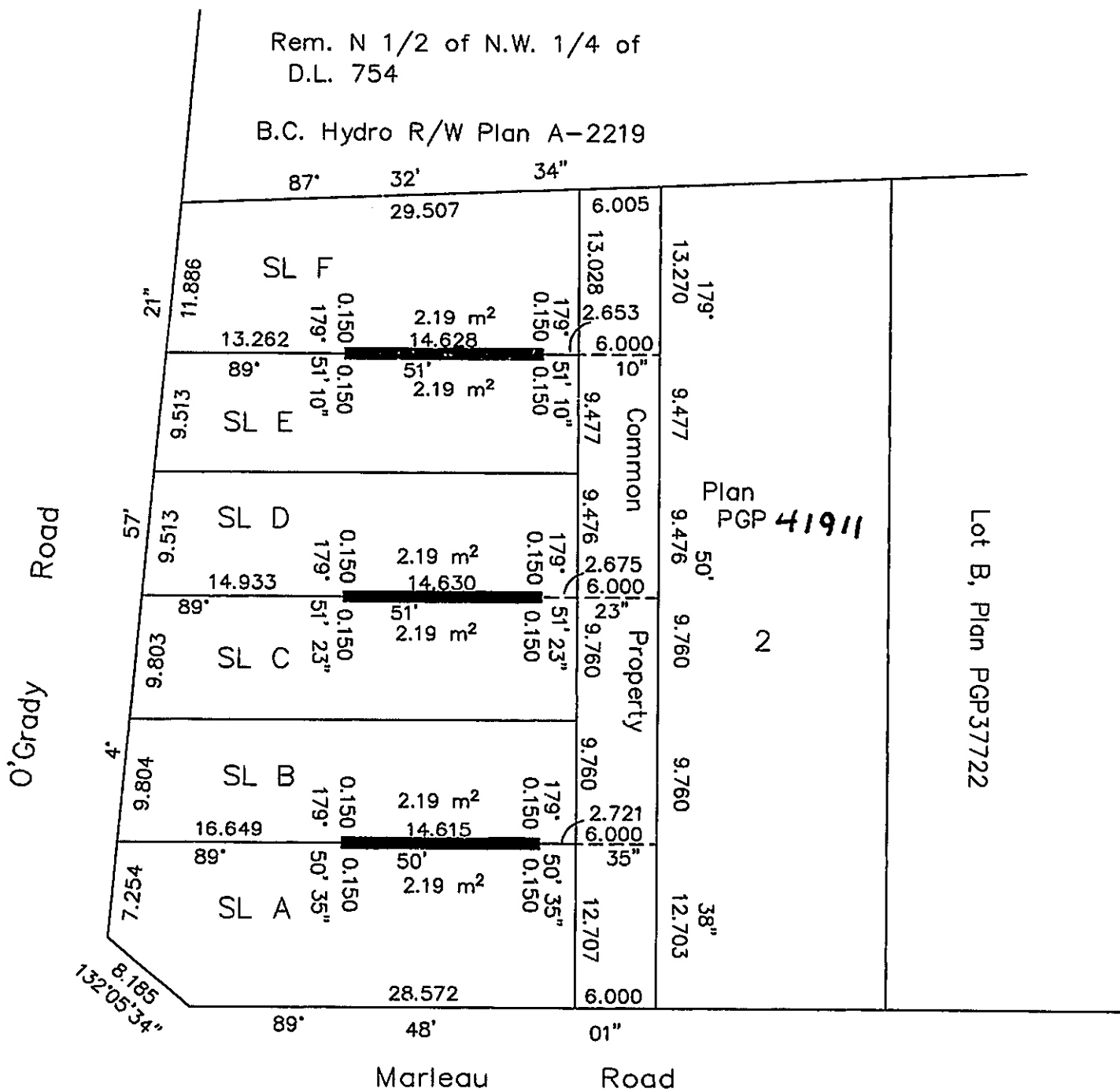
Linda Kilbride OR  
REGISTRAR

PM 693;

Scale: 1 : 500 (Distances are in metres)



Bearings are astronomic, derived from  
Plan PGP 41911



| Description                 | Area                |
|-----------------------------|---------------------|
| S.L. A, Plan PGS <u>277</u> | 2.19 m <sup>2</sup> |
| S.L. B, Plan PGS <u>277</u> | 2.19 m <sup>2</sup> |
| S.L. C, Plan PGS <u>277</u> | 2.19 m <sup>2</sup> |
| S.L. D, Plan PGS <u>277</u> | 2.19 m <sup>2</sup> |
| S.L. E, Plan PGS <u>277</u> | 2.19 m <sup>2</sup> |
| S.L. F, Plan PGS <u>277</u> | 2.19 m <sup>2</sup> |

Certified Correct  
According to Land Title Office records  
this 11th day of August, 1997.

Gordon Kilbride  
Gordon Kilbride, B.C.L.S.  
LTO Client No. 10909

This plan lies within the Fraser-Fort  
George Regional District.

**KILBRIDE LAND SURVEYING LTD.**  
British Columbia Land Surveyors  
Prince George, B.C.  
Ph: (250) 562-1196 Fax: 562-3656

|            |           |                   |
|------------|-----------|-------------------|
| F.B.- VZ11 | D.L.- 754 | FILE No. 960850E1 |
|------------|-----------|-------------------|