

# 26-FF-226

EXPLANATORY PLAN OF  
COVENANT AREA ON  
LOT 1, PLAN PGP 41758,  
DISTRICT LOT 1593, and 1592  
CARIBOO DISTRICT.  
B.C.G.S. 93G.086

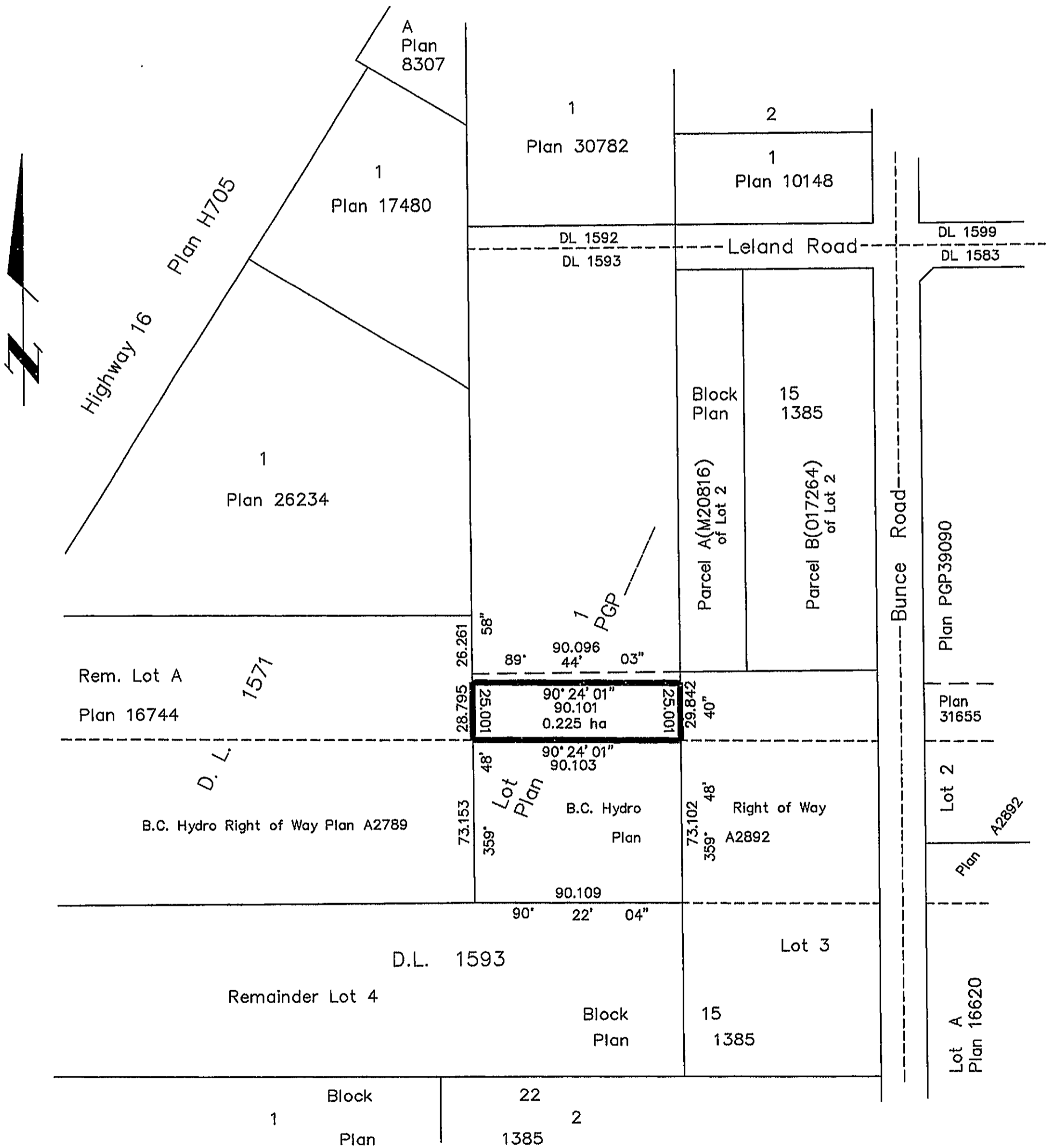
PLAN NO. PGP 41759

Deposited in the Land Title Office at Prince  
George this 31 day of Oct. 1997

Linda Kilbride / AK  
REGISTRAR

PL 60936

Scale: 1 : 2000 (Distances are in metres)



Certified Correct  
According to Land Title Office records  
this 25th day of March, 1997.

Gordon Kilbride  
Gordon Kilbride, B.C.L.S.  
LTO Client No. 10909

This plan lies within the Fraser-Fort  
George Regional District.

<b>KILBRIDE LAND SURVEYING LTD.</b> British Columbia Land Surveyors Prince George, B.C. Ph: (604) 562-1196 Fax: 562-3656		
F.B.-	D.L.- 1593	REF. NO.- 970181