

26-FF-226

REFERENCE PLAN TO ACCOMPANY A COVENANT WITHIN LOTS 1, 2, 3, 4 & 5, PLAN PGP 41619, DISTRICT LOT 635, CARIBOO DISTRICT.

PLAN NO. PGP 41620

Deposited in the Land Title Office at Prince George this 12 day of September 1997

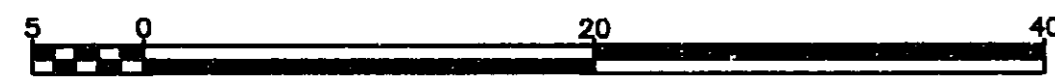
Pursuant to Section 215 of The Land Title Act.

Linda J. Kilbride r.m.
REGISTRAR PK 51524

B.C.G.S. 93G.087

Scale: 1 : 500 (Distances are in metres)

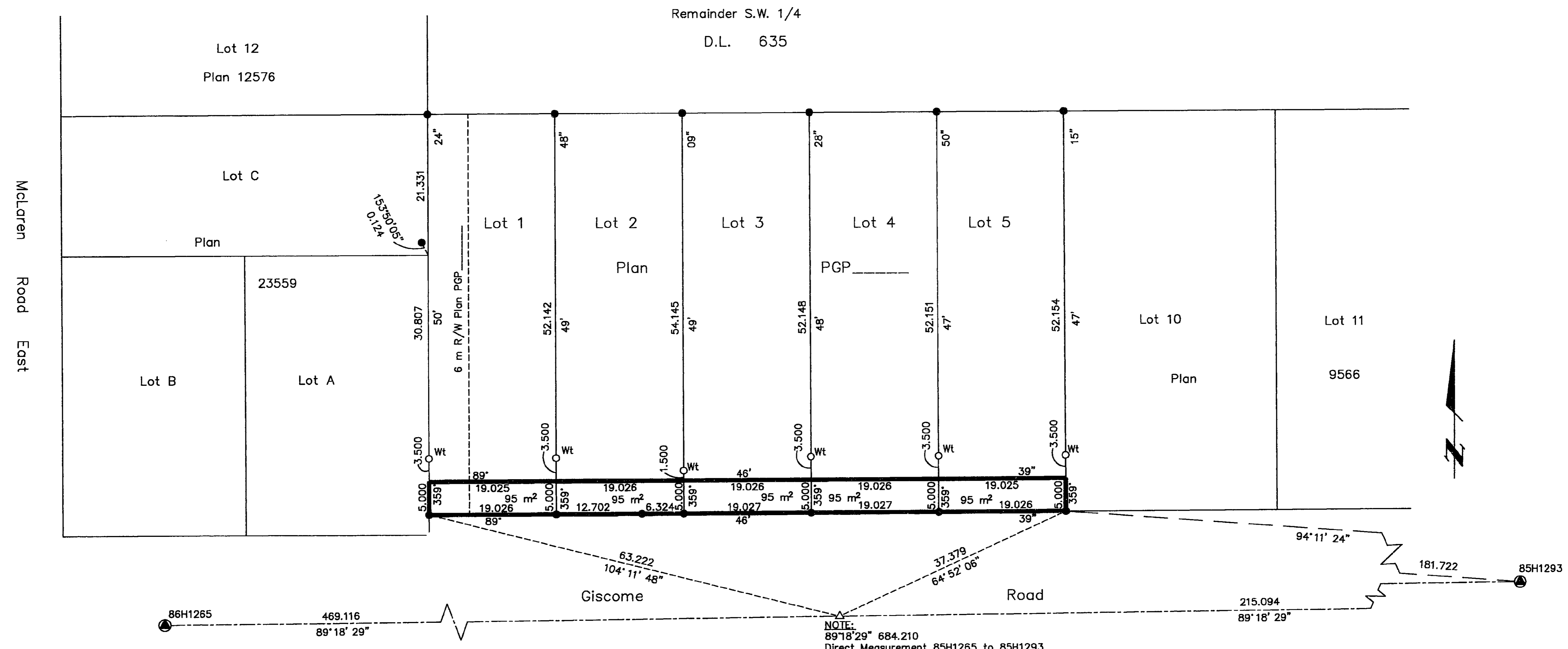
Grid bearings are derived from observations between control monuments 85H1265 and 85H1293, integrated survey area number 39, City of Prince George, B.C.



LEGEND

- Standard Iron Post Found
- Standard Iron Post Placed
- ⊙ Control Monument Found
- △ Traverse Hub Placed

Note: This plan shows ground level measured distances. Prior to computation of U.T.M. co-ordinates multiply by the combined factor 0.99949646



Book of Reference	
Description	Area
Lot 1, Plan PGP _____	95 m ²
Lot 2, Plan PGP _____	95 m ²
Lot 3, Plan PGP _____	95 m ²
Lot 4, Plan PGP _____	95 m ²
Lot 5, Plan PGP _____	95 m ²

I, Dale Keown, a British Columbia Land Surveyor of Prince George in British Columbia, certify that I was present at and personally superintended the survey represented by this plan and that the survey and plan are correct. The survey was completed on the 13th day of August, 1997.

Dale Keown
Dale Keown, B.C.L.S.
LTO Client No. 010908

This plan lies within the Fraser-Fort George Regional District.

KILBRIDE LAND SURVEYING LTD.
British Columbia Land Surveyors
Prince George, B.C.
Ph: (250) 562-1196 Fax: 562-3656

F.B.- VZ10	D.L.- 635	File No. - 970370C
------------	-----------	--------------------